



# GARDEN TOOLS



WUHAN MACTAN MACHINERY CO.,LTD  
YONGKANG MACTAN MACHINERY CO.,LTD

FACTORY ADDRESS: No.377 on West Huacheng Rd, Yongkang City, Zhejiang, China  
TEL / FAX: (86)-27-87882717  
MOB: +(86)13588693258; +(86)13692103520  
E-mail: sales3@mtmach.cn  
www.whmtmachinery.com



## WE ONLY MANUFACTURE THE MOST COST-EFFECTIVE GARDEN TOOLS

- FOCUS
- PROFESSION
- SPECIFIC



www.whmtmachinery.com



### COMPANY INTRODUCTION

Wuhan Mactan Machinery Co.,Ltd is a company focusing on development and production of small gasoline garden machinery. As a major supplier with rich experience, the company could satisfy the needs of different customers and provide solutions to various demands.

The company's main products are two-stroke gasoline chain saws, two/four-stroke brush cutter(trimmers),two-stroke hedge trimmer, two-stroke earth auger ,two/four-stroke water pump ,agricultural machinery, multi-function garden tools. It is a long-term supplier for many large wholesalers ,chain stores ,hardware hypermarkets and online sellers. Our high-quality products have brought better life to thousands of users at home and abroad.

The factory is located in Yongkang, Zhejiang Province. Thanks to the regional and industrial advantage ,Wuhan Mactan Machinery Co.,Ltd is currently undergoing a tremendous growth. The factory currently has more than 110 staff, including production managers with more than ten years' experience and senior engineers with abundant know-how in the research and development of garden machinery .Our team works together to make sure your questions would never be left unanswered.

Wuhan Mactan Machinery Co.,Ltd actively keeps improving its managements system and employs considerable resource to the establishment of ERP system ,which makes it possible to collect and share all kinds of information within the company. The successful implementation of ERP has greatly facilitated the management and enhanced the competitiveness of Wuhan Mactan Machinery. After 9 year' s development, Wuhan Mactan Machinery is now selling its products all over the world.

We believe that advanced technology, high quality and reasonable price are the mains features of our products, which will help our customer enlarge their market share in the industry.

### OUR VISION

*To become one of the most important manufacturers of garden machinery in the near future.*

## CONTENTS

<b>BRUSH CUTTER Series</b>	01-10
<b>CHAINSAW Series</b>	11-16
<b>HEDGE TRIMMER Series</b>	17-18
<b>EARTH AUGER Series</b>	19-24
<b>MINI TILLER Series</b>	25-28
<b>OUTBOARD MOTOR Series</b>	29-30
<b>GASOLINE PUMP Series</b>	31-32
<b>LEAF BLOWER Series</b>	33-34
<b>SPARE PARTS Series</b>	35-48



Model	MT-G45
Engine Type	Air cooled, Two stroke, Single cylinder
Engine Model	1E40F-3
Displacement	40.2 CC
Rated output power	1.9kw/9500rpm
Two-cycle Oil/Gasoline Mixing Ratio	1:25
Carburetor	Diaphragm Type/ Float type
Shaft Length	1500mm
Shaft diameter	26 or 28 mm
Packing way	Seperate/ Full packing
Loading Qty( 20GP/ 40GP/ 40HQ)	680/1424/1670pcs



MT-G45

KEY FEATURES

- Displacement 40.2cc, big power, power reaches 1.9kw/9500rpm. Normal 43cc real power is just 1.3-1.4kw. RPM is only 7500rpm.
- High efficiency. Working at a high speed situation, reliable and stable.
- Weight is lighter for 1kg than normal 43cc. Special design for professional workers. Feel not so tired with lighter weight after a whole day working.
- Stable continue working for more than 300 hours without any problems.
- Cylinder, piston, crankshaft, carburetor, are special designed. Can be started within one time when the engine is cold.
- Float type and diaphragm type can be both offered.



MT-BC260A/MT-BC260B

KEY FEATURES

- It is small, light and convenient to use
- Nylon trimmer head, 3T blade, 2T blade which can cut the grass more quickly and cleanly with the powerful engine
- D type handle, comfort using experience.
- Trimmer head can be changed quickly and easily.



Model	MT-BC260A/MT-BC260B
Engine Type	Air cooled, Two stroke, Single cylinder
Engine Model	1E34F
Displacement	25.4CC
Rated output power	0.7kw/ 7500rpm
Idle Speed	3000±2000rpm
Two-cycle Oil/Gasoline Mixing Ratio	1:25
Carburetor	Diaphragm Type
Shaft Length	1500mm
Shaft diameter	26mm
Loading Qty( 20GP/ 40GP/ 40HQ)	670/ 1400/ 1684 pcs



MT-BC330A

KEY FEATURES

- It is small, light and convenient to use
- Separating duplex bearing output block, with rubber boot inside, reduce the shock during working
- Nylon trimmer head, 3T blade, 2T blade which can cut the grass more quickly and cleanly with the powerful engine
- One year warranty as sale-after services



Model	MT-BC330A
Engine type	Air cooled, Two stroke, single cylinder
Engine model	1E36F
Displacement	33cc
Rated output power	0.9kw/7500rpm
Idle Speed	3000±200rpm
Carburetor type	Diaphragm Type
Shaft length	1500mm
Shaft diameter	26mm/28mm
Packing size	Engine carton 33*27*26cm    Shaft carton 165*10*11cm
G.W./N.W.	8.0/7.0kg
Loading Qty(20GP/40HQ)	680/1670pcs

## Brush Cutter Series



### Super easy start

With easier pulling and quicker starting. Risk of pull the start rope can be reduced up to 30%.



### Tough and heavy-duty gearcase

The Mactan's gearcases are designed and produced by the company itself featured heat treated, long life working hour.



### High-performance handle system

The handle is fixed in casting formed fixed folder, sturdiness and durability.



## MT-BC430T/BC520T

CE EURO-II (EURO-I)

Model	MT-BC430	MT-BC520
Engine Type	Air cooled, Two stroke, single cylinder	
Engine Model	1E40F-5	1E44F-5
Displacement	42.7CC	49.2CC
Rated output power	1.25kw/ 7500rpm	1.65kw/ 7500rpm
Idle Speed	3000±2000rpm	3000±2000rpm
Two-cycle Oil/Gasoline Mixing Ratio	1:25	1:25
Carburetor	Diaphragm Type	Diaphragm Type
Shaft Length	1500mm	1500mm
Shaft diameter	26 or 28 mm	26 or 28 mm
Loading Qty( 20GP/ 40GP/ 40HQ)	680/ 1424/ 1670 pcs	580/ 1200/ 1400 pcs



## MT-BC411A/MT-BC411B

CE EURO-II (EURO-I)

### KEY FEATURES

- 411 is an asymmetric design bike handle style brush cutter.
- The handle can be removed quickly from drive shaft without any tools.
- Carburetors are float type, simple structure, competitive cost.
- Nylon trimmer head, 2T blade, 40T blade are available.

## Brush Cutter Series



Model	MT-BC139A/MT-BC139S/MT-GX35
Engine Type	Air cooled, Four stroke, Single cylinder
Engine Model	1E39F
Displacement	31 CC/ 35.8CC
Rated output power	0.7kw 7500rpm/ 0.8kw 7500rpm
Idle Speed	3000±2000rpm
Carburetor	Diaphragm Type
Shaft Length	1500mm
Shaft diameter	26mm/ 28mm
Packing way	Separate/ Full packing
Loading Qty( 20GP/ 40GP/ 40HQ)	680/1424/1670pcs



## MT-BC139A/MT-BC139S/MT-GX35

CE EURO-II (EURO-I)

### KEY FEATURES

- Powerful and environmental friendly 4-Stroke-Engine.
- Ergonomic rubber handles for comfortable work.
- Nylon trimmer head, 3T blade, 2T blade which can cut the grass more quickly and cleanly with the powerful engine.
- Easy working, do not need to mix oil and fuel.



CE EURO-II (EURO-I)

### KEY FEATURES

- Backpack way makes us hold the machine lighter and easier.
- Sufficient power, low vibration.
- Nylon trimmer head, 3T blade, 2T blade which can cut the grass more quickly and cleanly with the powerful engine.
- Back pack brush cutter are great for use on large flat areas, and spread the load evenly on both shoulders making them more comfortable to wear for long periods of time.

## Brush Cutter Series

### MULTI-FUNCTION SERIES

By simply changing the attachment you will get completely different tools. Due to its diversity, the Multi-Tool X in1 allows you to trim lawn, cut branches and hedges, plough soil, pump water and shake olive, etc.

#### Working Pole Extension

Extension working pole for extra 100cm longer reach.

#### Pole Pruner

This long pole chain saw enables you to prune tree branches hardly accessible by normal chainsaws.

#### Grass Trimmer/Cutter

The trimmer/cutter is capable to cut through thick and thin when the motor mower is out of its depth.

#### Far Reaching Hedge Trimmer

This articulating trimmer head is designated for trimming and shaping tall, long or extra-wide hedge.

#### Olive Harvester

It picks up the fruit by hooking onto the branch then shaking with high speed.

#### Cultivator

This attachment ameliorates the supply of nutrient and improves root growth by ploughing the soil.

#### Lawn Edger

This attachment can cut the grass along the roadside or garden side where the lawn mower or grass trimmer cannot reach.

#### Water Pump

This attachment can help you irrigate your garden or rice field by drawing water from close rivers directly.



### ALTERNATIVE ENGINE DESIGN



Available Displacement



MT-1E34F



MT-1E36F



MT-1E44F-5



MT-1E40F-5

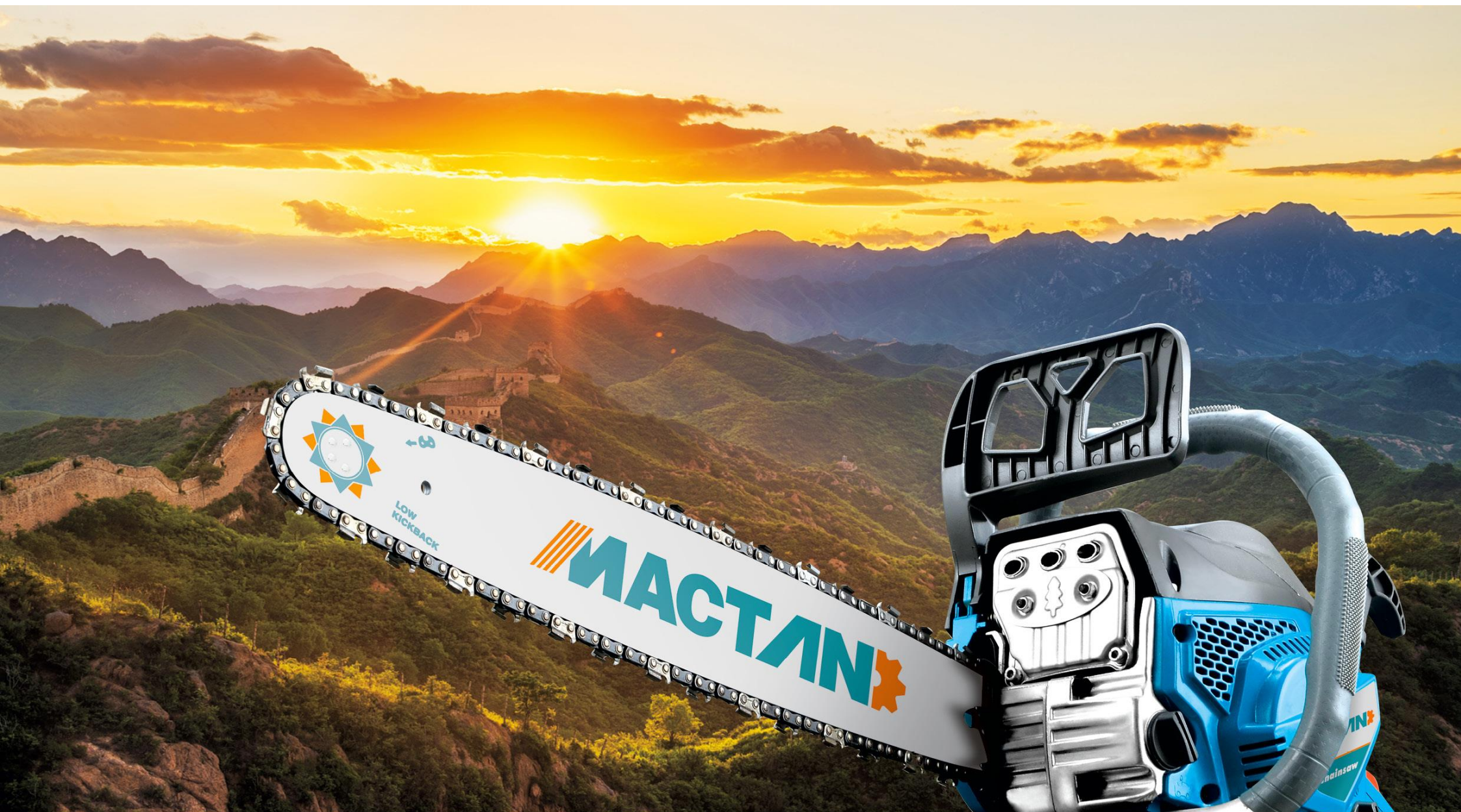
### MT-1E40F-5/1E34F/1E36F/1E44F-5

CE EURO-II (EURO-I)

#### MULTI-FUNCTION SERIES

By simply changing the attachment you will get completely different tools. Due to its diversity, the Multi-Tool X in1 allows you to trim lawn, cut branches and hedges, plough soil, pump water and shake olive, etc.

Model	MT-1E40F-5/1E34F/1E36F/1E44F-5	
Engine type	single cylinder, air-forced cool, 2 stroke	Accessories
Displacement	42.7cc	
Rated output power	1.2kw/7500rpm	
Carburetor	diaphragm type	
Fuel tank capacity	1200ml	Package
Pipe diameter	26mm	
Length of bar	12"	
Length of trimmer	450mm	
Meas	1070x280x280mm	
Loading quantity	340pcs/20GP, 680pcs/40GP, 790pcs/40HQ	



### DURABLE, SAFE, USER-FRIENDLY

Feel like a professional user every day in every situation.

High-performance, strong horsepower and yet, cost-effective chainsaws – these are definitely the best choice in cutting thick and hard wood!

Model	MT-CS2500
Engine type	Air-cooled, two stroke, single cylinder
Displacement	25.4 cc
Engine	1E34F
Rated output power	0.9kw / 8500rpm
Idle Speed	3300±200rpm
Bar length	11.5" (29cm) 12" (30.5cm)
Two-cycle Oil/Gasoline mixing ratio	1:25
Fuel tank capacity	230 ml
Oil tank capacity	160 ml
G.W./N.W.	4.5/3.5 kgs
Meas.	300*230*340mm
Loading Qty(20GP/40HQ)	1900/4180pcs



## MT-CS2500

CE EURO-II (EURO-II)

### KEY FEATURES

- Small size and light weight, can be operated by one hand.
- Provide great comfort by this design.
- Easy access air filter makes convenient maintenance.
- Optional bars for 11.5" ,12" to meet your unique demand.
- Suitable for bamboo cutting too.
- Easy starter system.



### KEY FEATURES

- Light weighted, comfort using experience.
- Optional bars for 11.5" ,12" ,14" and 16" to meet your unique demand.
- Easy to start. Can be started within 3 times by pulling the starter when the engine is cold.
- Easy and convenient for maintenance.



## MT-CS3800A/B

CE EURO-II (EURO-II)

Model	MT-CS3800A/B
Engine type	Air-cooled, two stroke, single cylinder
Displacement	37.2 cc
Engine	1E39F
Rated output power	1.3kw /8000rpm
Idle Speed	3300±200rpm
Bar length	11.5" (29cm) 12" (30.5cm) 14" (35.5cm) 16" (40.6cm)
Two-cycle Oil/Gasoline mixing ratio	1:25
Fuel tank capacity	310 ml
Oil tank capacity	210 ml
G.W./N.W.	6.5/5.5 kgs
Meas.	430*255*290mm
Loading Qty(20GP/40HQ)	930/2180pcs



## MT-CS4500A

Engine type	Air-cooled, Two stroke, Single cylinder
Displacement	45 cc
Engine	1E43F
Rated output power	1.7kw /11000rpm
Idle Speed	3000±200rpm
Bar length	16" (40cm) 18" (45cm) 20" (50cm)
Two-cycle Oil/Gasoline mixing ratio	1:25
Fuel tank capacity	550 ml
Oil tank capacity	260 ml
Meas.	450*255*290mm; 450*255*290/120mm
Loading Qty(20GP/40HQ)	900/2100pcs; 1250/2880pcs

CE EURO-II (EURO-II)



## MT-CS5800A

Engine type	Air-cooled, Two stroke, Single cylinder
Displacement	58cc
Engine	1E45.2F
Rated output power	2.3kw /11000rpm
Idle Speed	3000±200rpm
Bar length	18" (45cm) 20" (50cm) 22" (55cm)
Two-cycle Oil/Gasoline mixing ratio	1:25
Fuel tank capacity	550ml
Oil tank capacity	260ml
Meas.	505*255*290mm; 505*255*300/120mm
Loading Qty(20GP/40HQ)	790/1860pcs; 1100/2550pcs

CE EURO-II (EURO-II)



## MT-CS5200A

Engine type	Air-cooled, Two stroke, Single cylinder
Displacement	52cc
Engine	1E45F
Rated output power	2.1kw /11000rpm
Idle Speed	3000±200rpm
Bar length	18" (45cm) 20" (50cm) 22" (55cm)
Two-cycle Oil/Gasoline mixing ratio	1:25
Fuel tank capacity	550 ml
Oil tank capacity	260 ml
Meas.	505*255*290mm; 505*255*300/120mm
Loading Qty(20GP/40HQ)	790/1860pcs; 1100/2550pcs

CE EURO-II (EURO-II)



## MT-CS6200A

Engine type	Air-cooled, Two stroke, Single cylinder
Displacement	62cc
Engine	1E48F
Rated output power	2.6kw /11000rpm
Idle Speed	3000±200rpm
Bar length	20" (50cm) 22" (55cm) 24" (60cm)
Two-cycle Oil/Gasoline mixing ratio	1:25
Fuel tank capacity	550ml
Oil tank capacity	260ml
Meas.	505*255*295mm; 505*255*300/140mm
Loading Qty(20GP/40HQ)	790/1860pcs; 1060/2480pcs

CE EURO-II (EURO-II)



## MT-HT2300

CE EURO-II (EURO-I)

Model	MT-HT2300
Engine Type	Air cooled, Two stroke, Single cylinder
Engine Model	1E32FV
Displacement	22.5cc
Rated output power	0.65kw/7500rpm
Idle speed	3000rpm
Gasoline/oil Mixing Ratio	25:1
Blade length	750mm
Teeth distance	27mm
Packing	115*27*26cm/1pc.
N.W/G.W	8.0/9.0kgs.
Loading Qty(20GP)	360pcs.



## MT-HT2600

CE EURO-II (EURO-I)

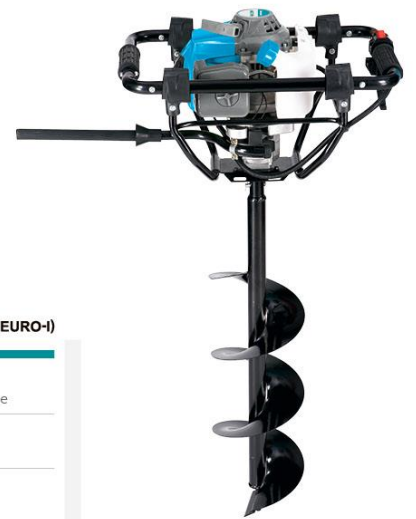
Model	MT-HT2600
Engine Type	Air cooled, Two stroke, Single cylinder
Engine Model	1E34FV
Displacement	25.4cc
Rated output power	0.75kw/7500rpm
Idle speed	3000rpm
Gasoline/oil mixing ratio	25:1
Blade length	580mm
Teeth distance	27mm
Packing	116*20*28cm/1pc.
N.W/G.W	7.0/8.5kgs.
Loading Qty(20GP)	450pcs.



## MT-D001

CE EURO-II (EURO-I)

Displacement	63 cc
Engine Type	1E48F Air cooled, 2-stroke engine
Rated power	2.5Kw/9000rpm
Fuel tank capacity	1200ml
gasoline/2 cycle oil mixing ratio	25:1
Starting system	Recoil start
Ignition Type	C.D.I



## MT-D002

CE EURO-II (EURO-I)

Displacement	52 cc
Engine Type	1E44F-5 Air cooled, 2-stroke engine
Rated power	1.8Kw/8000rpm
Fuel tank capacity	1200ml
gasoline/2 cycle oil mixing ratio	25:1
Starting system	Recoil start
Ignition Type	C.D.I



MT-D003

CE EURO-II (EURO-I)

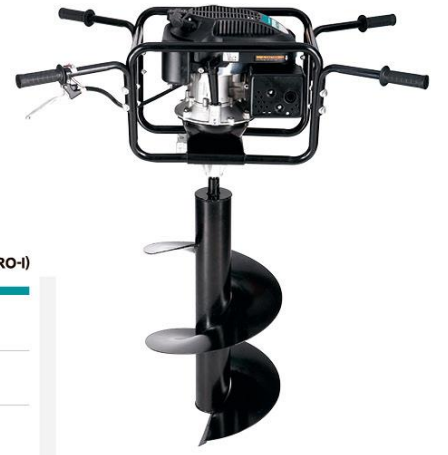
Displacement	63 cc
Engine Type	1E48F Air cooled, 2-stroke engine
Rated power	2.5Kw/9000rpm
Fuel tank capacity	1200ml
gasoline/2 cycle oil mixing ratio	25:1
Starting system	Recoil start
Ignition Type	C.D.I



MT-D005

CE EURO-II (EURO-I)

Displacement	159 cc
Engine Type	1P65 Air cooled, 4-stroke engine
Rated power	5.5Kw/3600rpm
Fuel tank capacity	1500ml
gasoline/4 cycle	
Starting system	Recoil start
Ignition Type	C.D.I



MT-D004

CE EURO-II (EURO-I)

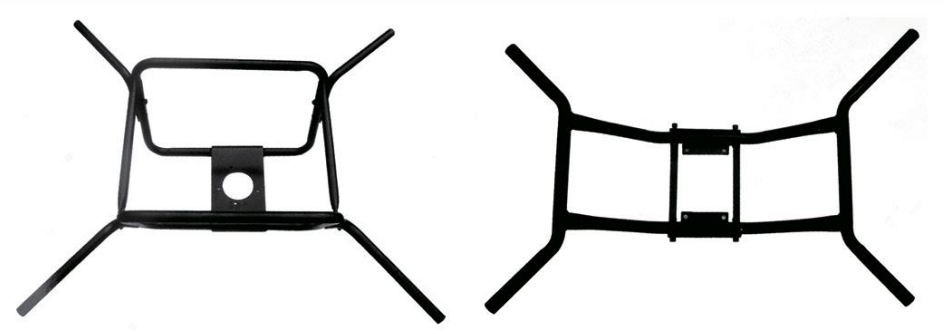
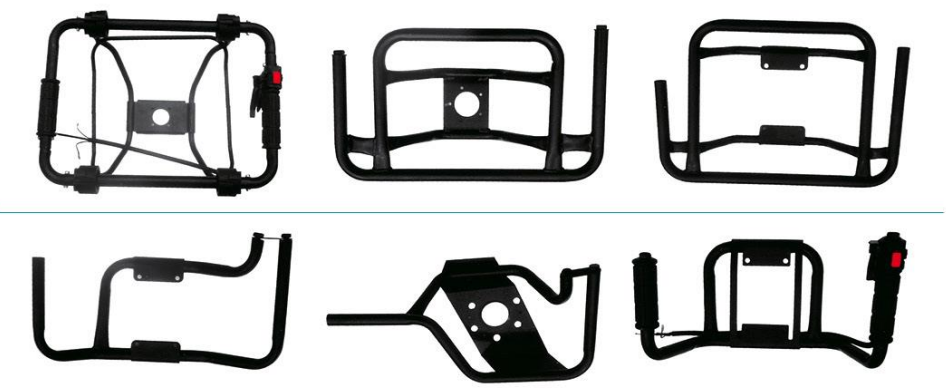
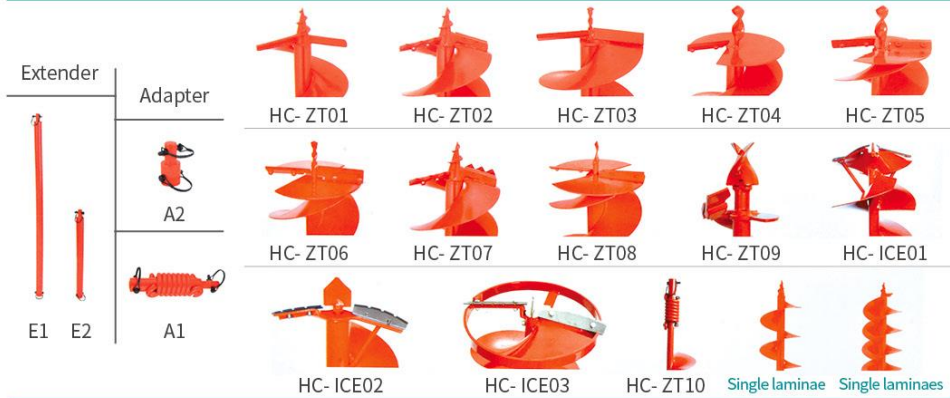
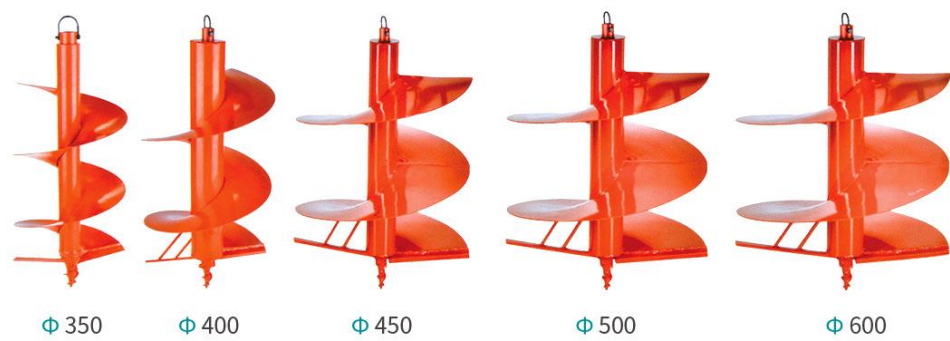
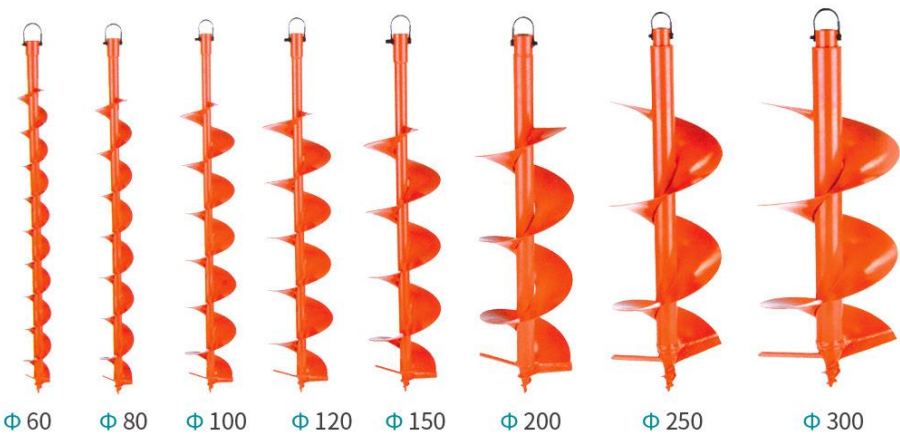
Displacement	52 cc
Engine Type	1E44F-5 Air cooled, 2-stroke engine
Rated power	1.8Kw/8000rpm
Fuel tank capacity	1200ml
gasoline/2 cycle oil mixing ratio	25:1
Starting system	Recoil start
Ignition Type	C.D.I



MT-D006

CE EURO-II (EURO-I)

Displacement	196 cc
Engine Type	1P70 Air cooled, 4-stroke engine
Rated power	7.0Kw/3800rpm
Fuel tank capacity	1800ml
gasoline/4 cycle	
Starting system	Recoil start
Ignition Type	C.D.I



## Mini Tiller Series



**MT-W001**

CE EURO-II (EURO-I)

Displacement	52 cc
Engine Type	1E44F-5, 2-stroke, Forced Air Cooling, Single Cylinder
Gear Shifting	0, 1
Rated power	2.2HP/6500r/min
Working width	36 cm
Working depth	10-15 cm



**MT-W002**

CE EURO-II (EURO-I)

Displacement	52 cc
Engine Type	1E44F-5, 2-stroke, Forced Air Cooling, Single Cylinder
Gear Shifting	0, 1
Rated power	2.2HP/6500r/min
Working width	36 cm
Working depth	10-15 cm



**MT-W003**

CE EURO-II (EURO-I)

Displacement	63 cc
Engine Type	1E48F, 2-stroke, Forced Air Cooling, Single Cylinder
Gear Shifting	0, 1
Rated power	2.5HP/6500r/min
Working width	40 cm
Working depth	20-25 cm

## Mini Tiller Series



**MT-W004**

CE EURO-II (EURO-I)

Displacement	42.7 cc
Engine Type	1E40F-5 2-stroke
Rated power	1.25Kw/6500rpm
Fuel tank capacity	1200ml
gasoline/2 cycle oil mixing ratio	25:1
Wheelbase	44 cm
Pole Diameter	26/28 mm



**MT-W005**

CE EURO-II (EURO-I)

Displacement	63 cc
Engine Type	1E48F 2-stroke
Rated power	2.5Kw/6500rpm
Fuel tank capacity	1200ml
gasoline/2 cycle oil mixing ratio	25:1
Wheelbase	44 cm
Pole Diameter	26/28/32 mm



## Outboard Motor Series



Gear box



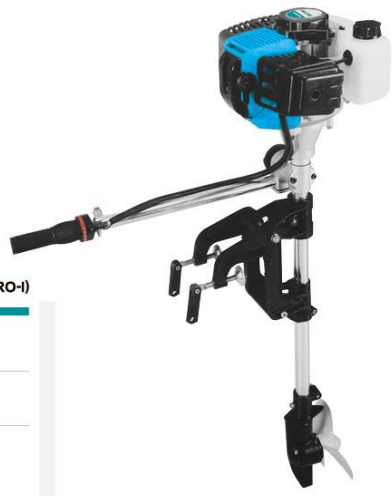
Propeller



Kill off Switch



Throttle handle



### MT-C001

CE EURO-II (EURO-II)

Displacement	52 cc
Engine Type	1E44F-5, 2-stroke
Rated power	1.9Kw/6500rpm
Fuel tank capacity	1200ml
Propeller diameter	180mm
Diameter for the tube	26-28mm
360° rotary handle with self-lock	
It can run 45 minutes with a full tank(1.2L)	



Aluminium shelf



Aluminium propeller



Kill off Switch



### MT-C002

CE EURO-II (EURO-II)

Displacement	52 cc
Engine Type	1E44F, 4-stroke
Rated power	3.3Kw/6500rpm
Fuel tank capacity	1300ml
Propeller diameter	180mm
engine oil	250ml
Max. Engine speed	8000/min
360° rotary handle with self-lock	



Aluminium shelf



Aluminium propeller



Kill off Switch



### MT-C003

CE EURO-II (EURO-II)

Displacement	196 cc
Engine Type	1P70, 4-stroke
Rated power	7.0Kw/3600rpm
Fuel tank capacity	1800ml
Propeller diameter	180mm
Engineoil	250ml



Aluminium shelf



Aluminium propeller



Kill off Switch



### MT-C004

CE EURO-II (EURO-II)

Displacement	196 cc
Engine Type	1P70, 4-stroke
Rated power	7.0Kw/3600rpm
Fuel tank capacity	1800ml
Propeller diameter	180mm
Engineoil	250ml

## Gasoline Pump Series



### MT-WP430/520/MT-WP139/MT-W411A/B

#### KEY FEATURES

- Strong Power motor, which achieves maximum suction and durability.
- Large fuel tank capacity extends running time and greater fuel efficiency.
- Special Low noise mufflers, achieves quiet running and low emissions, makes your operation more comfortable.
- Innovative and compact engine design ensures easy starting, easy usage, outstanding fuel economy, low emission as well as long-lasting durability.
- Unique rubber suspension system provides stability and delivers smooth running with less vibration.



CE EURO-II (EURO-II)

Model	MT-WP430/520	MT-WP139	MT-WP411A/B
Engine type	1E40F-5/1E44F-5 2-stroke	139F 4-stroke	1E40F-6 2-stroke
Displacement	43CC/52CC	31cc	40.2CC
Output Power	1.25kw/1.65kw	0.8kw	1.4kw
Mass flow rate	8-10m3/h	8-10m3/h	8-10m3/h
Suction length	6-8m	6-8m	6-8m
Max. head	25-30m	25-30m	25-30m
Water inlet diameter	1.5 / 1 inch	1.5 / 1 inch	1.5 / 1 inch
Water outlet diameter	1.5 / 1 inch	1.5 / 1 inch	1.5 / 1 inch
High speed	7500±500rpm	6500±500rpm	7500±500rpm
Idle speed	3000±200rpm	3000±200rpm	3000±200rpm
Gasoline Mixing Ratio	25 : 1	Pure gasoline	25 : 1
Lift	1"/20m,1.5"/15m	1"/20m,1.5"/15m	1"/20m,1.5"/15m



**MT-LB2600A**

Model	MT-LB2600A
Engine Type	Air cooled, Two stroke, Single cylinder
Rated output power	0.75kw
Air velocity	60m/s
Air volume	0.13m <sup>3</sup> /s
Packing	41.5x59x32cm/1pc
N.W/G.W	7.0/7.5kgs
Loading Qty(20GP)	359pcs

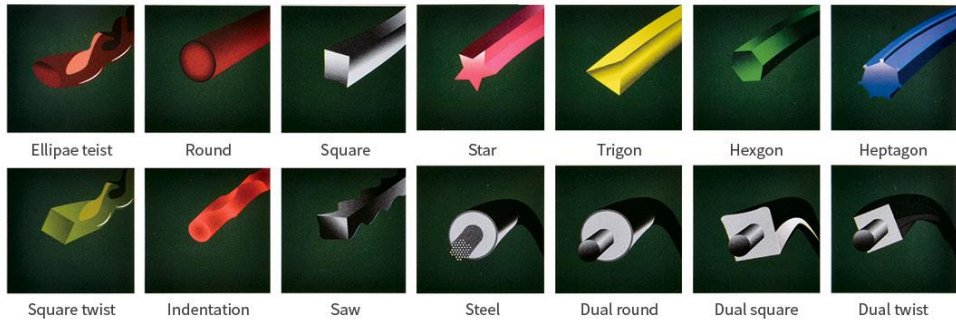
CE EURO-II (EURO-I)

**MT-LB2600B**

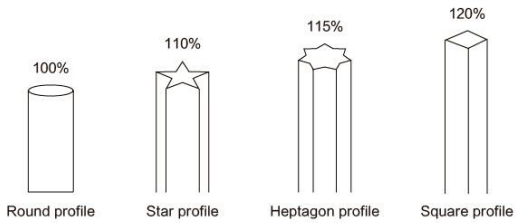
Model	MT-LB2600B
Engine Type	Air cooled, Two stroke, Single cylinder
Rated output power	0.75kw
Air velocity	60m/s
Air volume	0.13m <sup>3</sup> /s
Packing	58.5x31.5x41cm/1pc
N.W/G.W	7.0/7.5kgs
Loading Qty(20GP)	400pcs

CE EURO-II (EURO-I)

SHAPE



SHAPED CUTTING PERFORMANCE

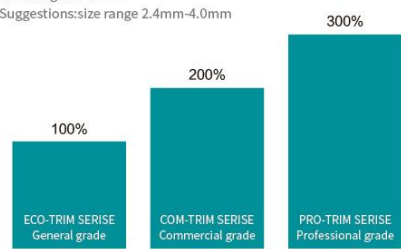


MATERIAL LEVEL

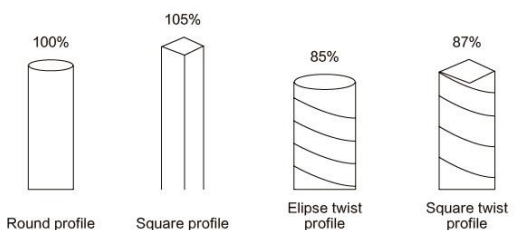
**ECO-TRIM SERISE**  
for home & DIY  
Suggestion: size range 1.30mm-3.5mm

**COM-TRIM SERISE**  
for professional landscaper, cuts 2x more area the General grade lines.  
Suggestion: size range 2.0mm-3.5mm

**PRO-TRIM SERISE**  
for professional landscaper in the ultra environment, cuts 3x more area the General grade lines.  
Suggestion: size range 2.4mm-4.0mm



SOUND POWER LEVEL

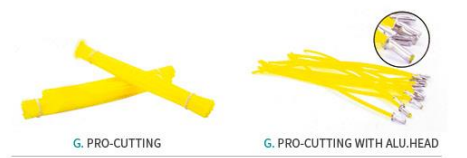


PRO-DUAL LINE COLOR



ALL PACKAGE

- A. CARD HEAD: for 10m/12m/15m
- B. UNIVERSAL BLISTER: for 10m/12m/15m 1/2LB(225G) 1LB(450G)
- C. PROFESSIONAL BLISTER: for 1LB(450G)
- D. SPOOL: for 1LB(450G) 3LB(1.35KG) 5LB(2.25KG) 8LB(3.6KG) 10LB(4.5KG) 20LB(9KG)
- E. BOX: for 1LB(450G)
- F. SUTTING LINE: for any size



SPECIAL LINE

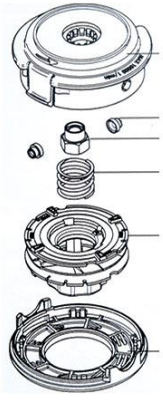
SAW LINE	CARDHEAD			BLISTER			PRO-BLISTER		
	Diameter mm(inch)	Metre m	QTY/CTN CTN SIZE	Metre m	QTY/CTN CTN SIZE	Metre m	G.W. g	QTY/CTN CTN SIZE	
3.0mm(0.120")X	12 15	140pcs	53x53x31	12 15	120pcs	55x44x37	50	1LB 40pcs 45x45x46	
3.3mm(0.130")X	12 15	120pcs	53x53x31	12 15	50pcs	40x40x43	36	1LB 40pcs 45x45x46	
3.5mm(0.140")X	12 15	100pcs	53x53x31	12 15	50pcs	40x40x43	27	1LB 40pcs 45x45x46	

INDENTATION LINE	CARDHEAD			BLISTER			PRO-BLISTER		
	Diameter mm(inch)	Metre m	QTY/CTN CTN SIZE	Metre m	QTY/CTN CTN SIZE	Metre m	N.W. g	QTY/CTN CTN SIZE	
2.4mm(0.095")X	12 15	240pcs	53x53x31	12 15	120pcs	55x44x37	85	1LB 40pcs 45x45x46	
2.7mm(0.105")X	12 15	200pcs	53x53x31	12 15	120pcs	55x44x37	68	1LB 40pcs 45x45x46	
3.0mm(0.120")X	12 15	160pcs	53x53x31	12 15	120pcs	55x44x37	55	1LB 40pcs 45x45x46	

STEEL LINE	CARDHEAD			BLISTER			PRO-BLISTER		
	Diameter mm(inch)	Metre m	QTY/CTN CTN SIZE	Metre m	QTY/CTN CTN SIZE	Metre m	N.W. g	QTY/CTN CTN SIZE	
2.4mm(0.120")X	12 15	120pcs	40x40x43	12 15	120pcs	48x48x34	50	500g 40pcs 45x45x46	
3.0mm(0.120")X	12 15	120pcs	40x40x43	12 15	120pcs	55x44x37	38	500g 40pcs 45x45x46	



**HIGHLIGHT**  
Easy loading without disassembling any parts of trimmer head

- Housing
- Eyelet
- Adaptor M12\*1.25LF
- Adaptor M12\*1.75LF
- Spring
- Spool
- Upper cover

**MTTH-A001**

MATERIAL	Nylon
ADAPTOR	M10 * 1.25LF
PACKAGE	Cardhead / Box / Blister

**MTTH-A002**

MATERIAL	Nylon
ADAPTOR	M10 * 1.25LF
PACKAGE	Cardhead / Box / Blister

**MTTH-A003**

MATERIAL	Nylon
ADAPTOR	M10 * 1.25LF
PACKAGE	Cardhead / Box / Blister

**MTTH-A004**

MATERIAL	Nylon / Smaller size
ADAPTOR	M10 * 1.25LF
PACKAGE	Cardhead / Box / Blister

**MTTH-A005**

MATERIAL	Nylon
ADAPTOR	M10 * 1.25LF
PACKAGE	Cardhead / Box / Blister

**MTTH-A006**

MATERIAL	Nylon
ADAPTOR	M10 * 1.25LF
PACKAGE	Cardhead / Box / Blister

**MTTH-A007**

MATERIAL	Nylon
ADAPTOR	M10 * 1.25LF
PACKAGE	Cardhead / Box / Blister

**MTTH-A008**

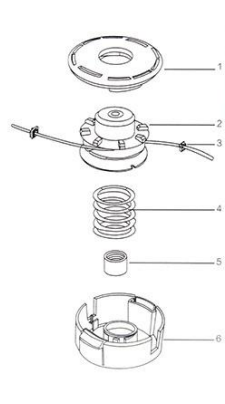
MATERIAL	Nylon
ADAPTOR	M10 * 1.25LF
PACKAGE	Cardhead / Box / Blister

**MTTH-A009**

MATERIAL	Nylon
ADAPTOR	ALL
PACKAGE	Cardhead / Box / Blister

**MTTH-A010**

MATERIAL	Nylon
ADAPTOR	M10 * 1.25LF
PACKAGE	Cardhead / Box / Blister



**HIGHLIGHT**  
TAP&GO

- Upper cover
- Spool
- Eyelet
- Spring
- Adaptor M10\*1.25LF
- Adaptor M12\*1.75LF
- Housing

**MTTH-B013**

MATERIAL	Nylon
ADAPTOR	M10 * 1.25LF
PACKAGE	Cardhead / Box / Blister

**MTTH-B014**

MATERIAL	Nylon
ADAPTOR	M10 * 1.25LF
PACKAGE	Cardhead / Box / Blister

**MTTH-B015**

MATERIAL	Nylon
ADAPTOR	M10 * 1.25LF
PACKAGE	Cardhead / Box / Blister

**MTTH-B016**

MATERIAL	Nylon / Smaller size
ADAPTOR	M10 * 1.25LF
PACKAGE	Cardhead / Box / Blister

**MTTH-B017**

MATERIAL	Nylon
ADAPTOR	M10 * 1.25LF
PACKAGE	Cardhead / Box / Blister

**MTTH-B018**

MATERIAL	Nylon
ADAPTOR	M10 * 1.25LF
PACKAGE	Cardhead / Box / Blister

**MTTH-B019**

MATERIAL	Nylon
ADAPTOR	M10 * 1.25LF
PACKAGE	Cardhead / Box / Blister

**MTTH-B020**

MATERIAL	Nylon
ADAPTOR	M10 * 1.25LF
PACKAGE	Cardhead / Box / Blister

**MTTH-B021**

MATERIAL	Nylon
ADAPTOR	M10 * 1.25LF
PACKAGE	Cardhead / Box / Blister

**MTTH-B022**

MATERIAL	Nylon
ADAPTOR	M10 * 1.25LF
PACKAGE	Cardhead / Box / Blister

**MTTH-C001**

MATERIAL	Nylon & Aluminum
ADAPTOR	ALL
PACKAGE	Cardhead / Box / Blister

**MTTH-C002**

MATERIAL	Aluminum
ADAPTOR	ALL
PACKAGE	Cardhead / Box / Blister

**MTTH-C003**

MATERIAL	Iron
ADAPTOR	ALL
PACKAGE	Cardhead / Box / Blister

**MTTH-C004**

MATERIAL	Nylon
ADAPTOR	ALL
PACKAGE	Cardhead / Box / Blister

**MTTH-C006**

MATERIAL	Nylon
ADAPTOR	ALL
PACKAGE	Cardhead / Box / Blister

**MTTH-C008**

MATERIAL	Nylon
ADAPTOR	ALL
PACKAGE	Cardhead / Box / Blister

**MTTH-C010**

MATERIAL	Aluminum
ADAPTOR	ALL
PACKAGE	Cardhead / Box / Blister

**MTTH-C011**

MATERIAL	Aluminum
ADAPTOR	ALL
PACKAGE	Cardhead / Box / Blister

**MTTH-C012**

MATERIAL	Aluminum
ADAPTOR	ALL
PACKAGE	Cardhead / Box / Blister

**MTTH-C013**

MATERIAL	Aluminum
ADAPTOR	ALL
PACKAGE	Cardhead / Box / Blister

**MTTH-C014**

MATERIAL	Aluminum
ADAPTOR	M10 * 1.25LF
PACKAGE	Cardhead / Box / Blister

**MTTH-C015**

MATERIAL	Aluminum
ADAPTOR	ALL
PACKAGE	Cardhead / Box / Blister

**MTQ-001**  
STARTER 40-5S

**MTQ-002**  
STARTER 40-5D

**MTQ-003**  
STARTER 40-5SE1

**MTQ-004**  
STARTER 40-5SE2

**MTQ-005**  
STARTER 40-5SE3

**MTQ-006**  
STARTER 40-5SE4

**MTQ-007**  
STARTER 40-6S

**MTQ-008**  
STARTER 40-6D1

**MTQ-009**  
STARTER 40-6D2

**MTQ-010**  
STARTER 40-6SE1

**MTQ-011**  
STARTER 40-6SE2

**MTQ-012**  
STARTER 328D

**MTQ-013**  
STARTER 328E

**MTQ-014**  
STARTER 139S1

**MTQ-015**  
STARTER 139S2

**MTQ-016**  
STARTER H139S

**MTQ-017**  
STARTER H139E

**MTQ-018**  
STARTER H139SE

**FIXING SERIES**



<b>MTF-001</b> FIXING	<b>MTF-002</b> FIXING	<b>MTF-003</b> FIXING	<b>MTF-004</b> FIXING
Pipe size: $\Phi 26$ $\Phi 28$ $\Phi 32$	Pipe size: $\Phi 26$ $\Phi 28$	Pipe size: $\Phi 26$ $\Phi 28$	Pipe size: $\Phi 26$ $\Phi 28$
Switch pole size: 19mm	Switch pole size: 19mm	Switch pole size: 19mm	Switch pole size: 21mm



<b>MTF-005</b> FIXING	<b>MTF-006</b> FIXING	<b>MTF-007</b> FIXING	<b>MTF-008</b> FIXING	<b>MTF-009</b> FIXING
Pipe size: $\Phi 26$ $\Phi 28$	Pipe size: $\Phi 26$	Pipe size: $\Phi 26$ $\Phi 28$	Pipe size: $\Phi 26$ $\Phi 28$	Pipe size: $\Phi 26$ $\Phi 28$
Switch pole size: 19/21mm	Switch pole size: ---	Switch pole size: ---	Switch pole size: T7 T9	Switch pole size: T7 T9

**GEARCASE ASSY SERIES**



<b>MTG-001</b> GEARCASE ASSY	<b>MTG-002</b> GEARCASE ASSY	<b>MTG-003</b> GEARCASE ASSY	<b>MTG-004</b> GEARCASE ASSY
Pipe size: $\Phi 26$ $\Phi 28$	Pipe size: $\Phi 24$ $\Phi 26$ $\Phi 28$	Pipe size: $\Phi 28$	Pipe size: $\Phi 26$ $\Phi 28$
Shaft type: $\Phi 5.3 \times 5.3$ Square T7 T9	Shaft type: $\Phi 5.3 \times 5.3$ Square T7 T9	Shaft type: T7 T9	Shaft type: $\Phi 5.3 \times 5.3$ Square T7 T9



<b>MTG-005</b> GEARCASE ASSY	<b>MTG-006</b> GEARCASE ASSY	<b>MTG-007</b> GEARCASE ASSY	<b>MTG-008</b> GEARCASE ASSY	<b>MTG-009</b> GEARCASE ASSY
Pipe size: $\Phi 26$ $\Phi 28$	Pipe size: $\Phi 26$ $\Phi 28$	Pipe size: $\Phi 25.4$	Pipe size: $\Phi 26$ $\Phi 28$	Pipe size: $\Phi 26$ $\Phi 28$
Shaft type: $\Phi 6.3 \times 6.3$ Square T7 T9	Shaft type: $\Phi 5.3 \times 5.3$ Square T7 T9	Shaft type: $\Phi 5.3 \times 5.3$ Square	Shaft type: $\Phi 6.3 \times 6.3$ Square T7	Shaft type: $\Phi 5.3 \times 5.3$ Square T7 T9

**CLUTCH CASE ASSY SERIES**



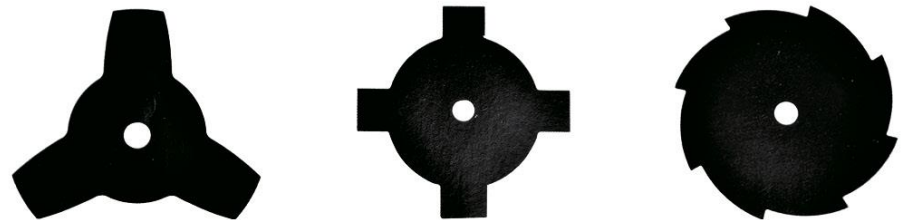
<b>MTC-001</b> CLUTCH CASE ASSY	<b>MTC-002</b> CLUTCH CASE ASSY	<b>MTC-003</b> CLUTCH CASE ASSY	<b>MTC-004</b> CLUTCH CASE ASSY
Pipe size: $\Phi 26$ $\Phi 28$	Pipe size: $\Phi 28$	Pipe size: $\Phi 26$ $\Phi 28$	Pipe size: $\Phi 26$
Shaft type: $\Phi 5.3 \times 5.3$ Square T7 T9	Shaft type: $\Phi 5.3 \times 5.3$ Square T7 T9	Shaft type: $\Phi 6.3 \times 6.3$ Square T7 T9	Shaft type: $\Phi 5.3 \times 5.3$ Square T7 T9



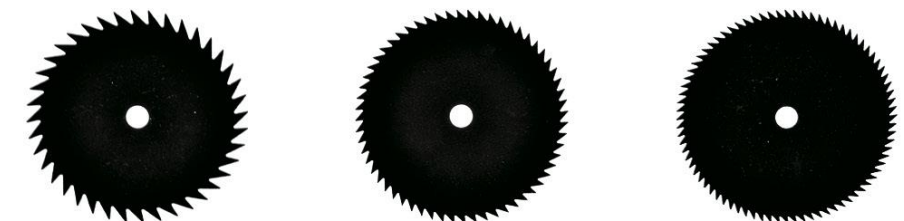
<b>MTC-005</b> CLUTCH CASE ASSY	<b>MTC-006</b> CLUTCH CASE ASSY	<b>MTC-007</b> CLUTCH CASE ASSY	<b>MTC-008</b> CLUTCH CASE ASSY	<b>MTC-009</b> CLUTCH CASE ASSY
Pipe size: $\Phi 26$ $\Phi 28$	Pipe size: $\Phi 26$ $\Phi 28$	Pipe size: $\Phi 5.3 \times 5.3$ Square T7 T9	Pipe size: $\Phi 26$ $\Phi 28$	Pipe size: $\Phi 26$ $\Phi 28$
Shaft type: $\Phi 5.3 \times 5.3$ Square T7 T9	Shaft type: $\Phi 6.3 \times 6.3$ Square T7 T9	Shaft type: $\Phi 5.3 \times 5.3$ Square T7 T9	Shaft type: $\Phi 5.3 \times 5.3$ Square T7 T9	Shaft type: $\Phi 5.3 \times 5.3$ Square T7 T9



<b>MTD-001</b> BLADE	<b>MTD-002</b> BLADE	<b>MTD-003</b> BLADE
THICKNESS: 1.4/1.6/1.8/2.0mm	THICKNESS: 1.4/1.6/1.8/2.0mm	THICKNESS: 1.4/1.6mm
SIZE: 25.4*255/305/355mm	SIZE: 25.4*255/305/355mm	SIZE: 25.4*230/254mm



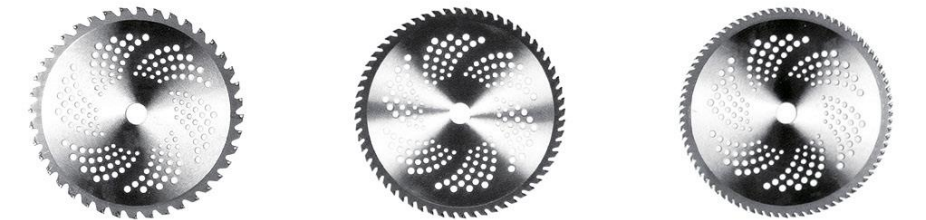
<b>MTD-004</b> BLADE	<b>MTD-005</b> BLADE	<b>MTD-006</b> BLADE
THICKNESS: 1.4/1.6mm	THICKNESS: 1.4/1.6mm	THICKNESS: 1.4/1.6mm
SIZE: 25.4*230/255*3T	SIZE: 25.4*230/255*4T	SIZE: 25.4*230/255*8T



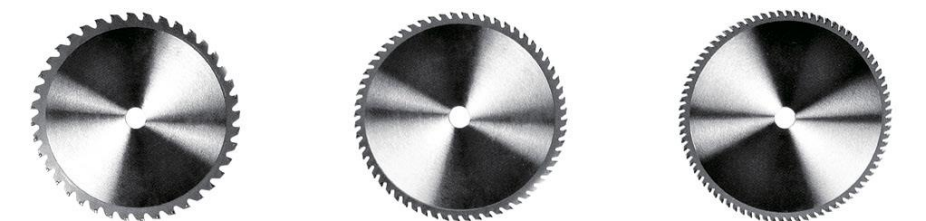
<b>MTD-007</b> BLADE	<b>MTD-008</b> BLADE	<b>MTD-009</b> BLADE
THICKNESS: 1.4/1.6mm	THICKNESS: 1.4/1.6mm	THICKNESS: 1.4/1.6mm
SIZE: 25.4*230/255*40T	SIZE: 25.4*230/255*60T	SIZE: 25.4*230/255*80T



<b>MTD-016</b> BLADE	<b>MTD-017</b> BLADE	<b>MTD-018</b> BLADE
THICKNESS: 1.4/1.6/1.8/2.0mm	THICKNESS: 1.4/1.6/1.8/2.0mm	THICKNESS: 1.4/1.6/1.8/2.0mm
SIZE: 25.4*255/305/355mm	SIZE: 25.4*255/305/355mm	SIZE: 25.4*255/305/355mm



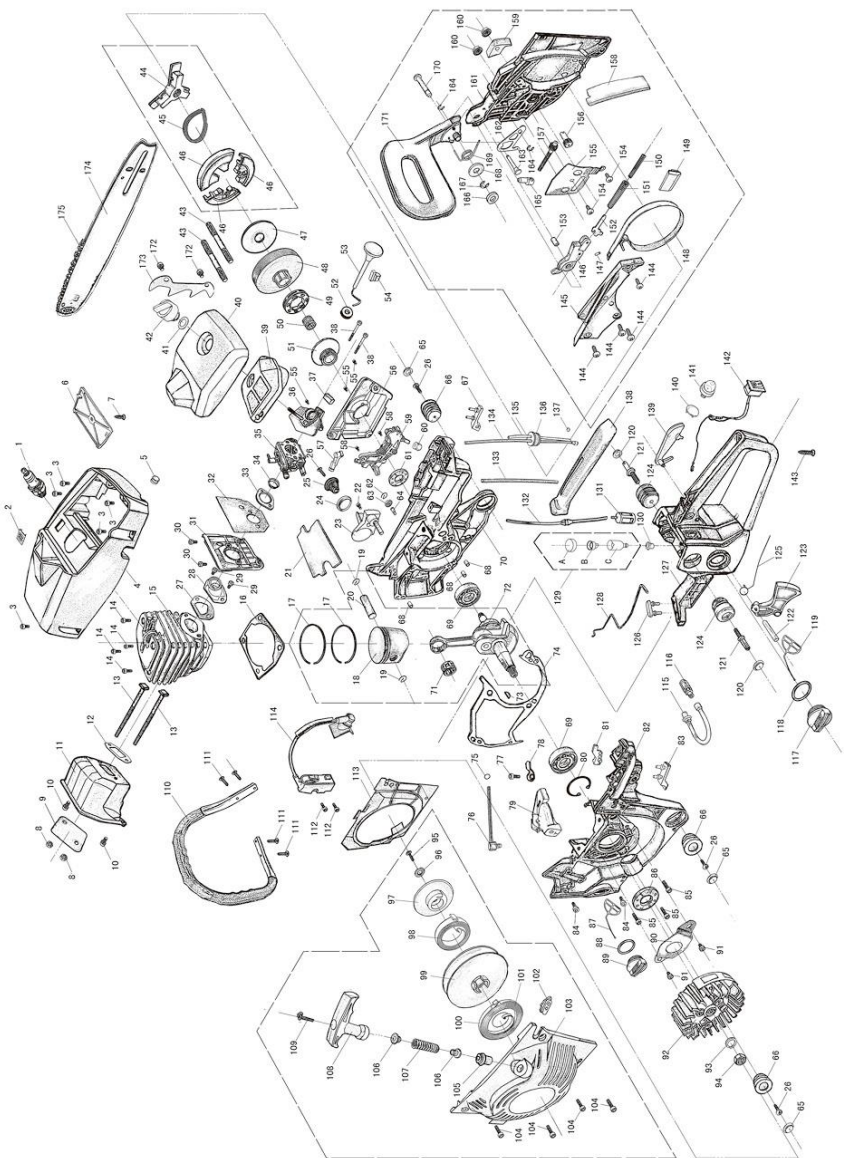
<b>MTD-016</b> BLADE	<b>MTD-017</b> BLADE	<b>MTD-018</b> BLADE
THICKNESS: 1.3/1.6mm	THICKNESS: 1.3/1.6mm	THICKNESS: 1.3/1.6mm
SIZE: 25.4*230/255*40T	SIZE: 25.4*230/255*60T	SIZE: 25.4*230/255*80T



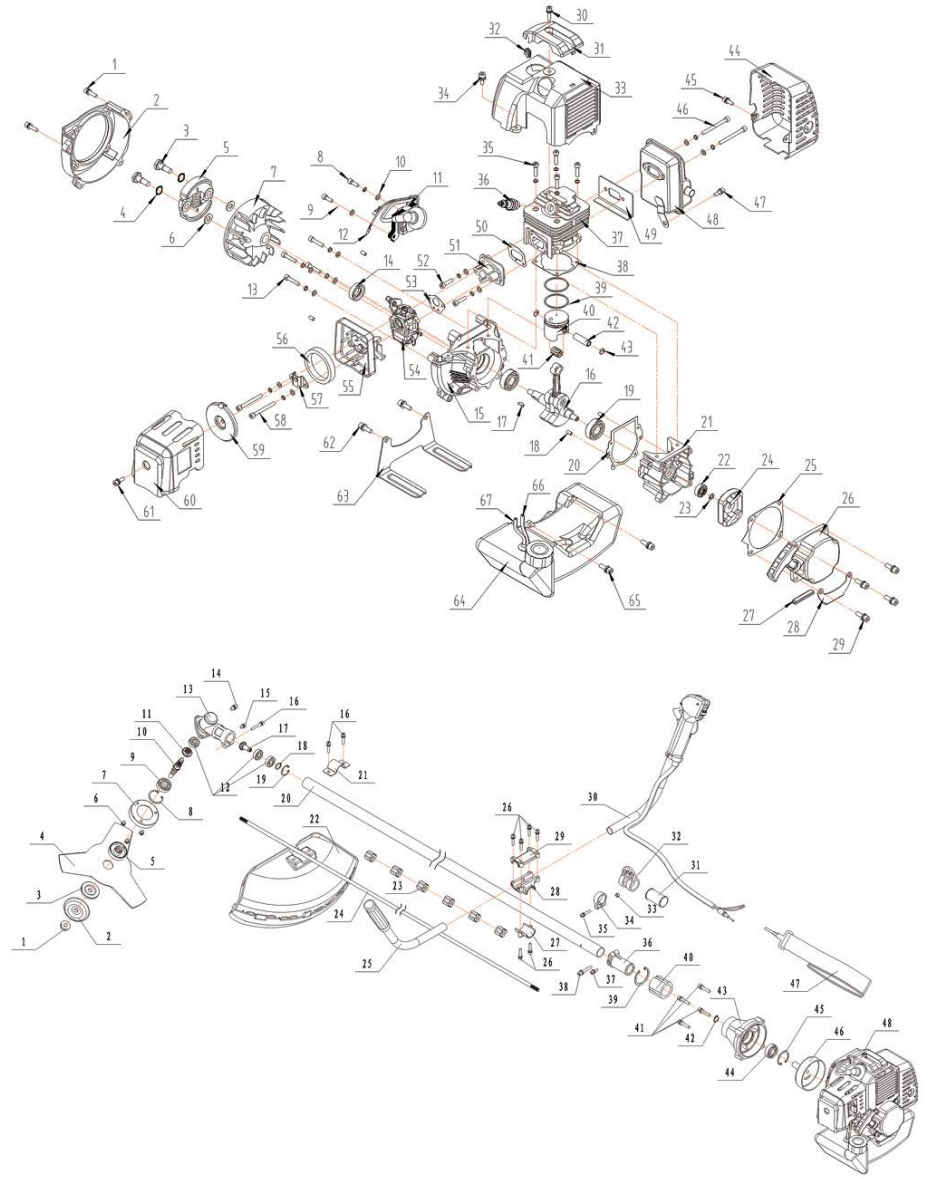
<b>MTD-016</b> BLADE	<b>MTD-017</b> BLADE	<b>MTD-018</b> BLADE
THICKNESS: 1.4/1.6/1.8/2.0mm	THICKNESS: 1.4/1.6/1.8/2.0mm	THICKNESS: 1.4/1.6/1.8/2.0mm
SIZE: 25.4*230/255*40T	SIZE: 25.4*230/255*60T	SIZE: 25.4*230/255*80T



EXPLOSIVE DRAWING — CHAIN SAW



EXPLOSIVE DRAWING — BRUSH CUTTER





WUHAN MACTAN MACHINERY CO.,LTD  
YONGKANG MACTAN MACHINERY CO.,LTD

Factory Address: No.337 on West Huacheng Rd.,Yongkang City, Zhejiang, China

Mobile/WeChat/WhatsApp: 0086 135 8869 3258

Email : sales1@mtmach.cn

Web: www.mtmach.en.alibaba.com



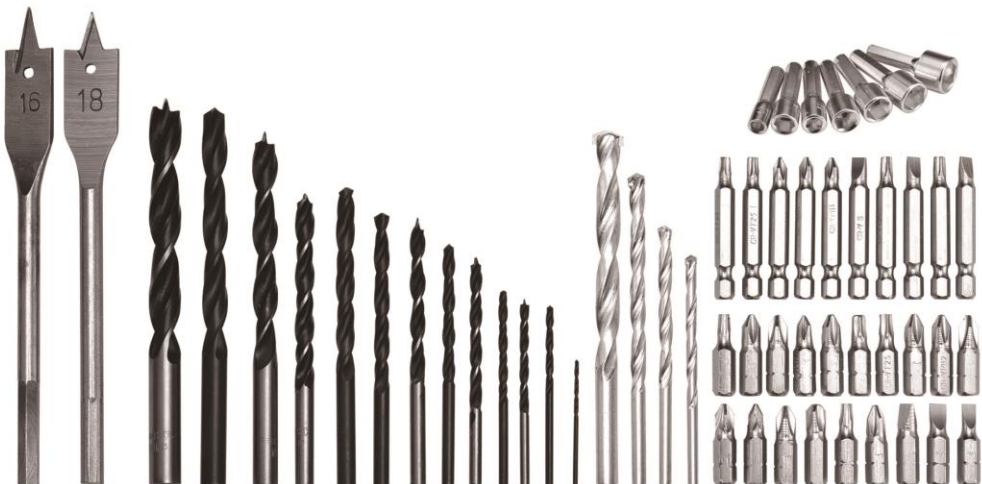
WeChat



CORDLESS SERIES  
MT  
锂电系列

CORDLESS DRILL  
锂电钻

- 起拧螺丝  
Unscrewing screw
- 平钻钻孔  
Flat drilling
- 冲击钻孔  
Impact drilling



CORDLESS DRILL  
锂电钻

- 起拧螺丝  
Unscrewing screw
- 平钻钻孔  
Flat drilling
- 冲击钻孔  
Impact drilling



产品型号/货号	MT 6016 CD-12	MT 7011 CD-21
最大夹头直径 Max Chuck Capacity	10mm	10mm
额定电压 Rated Voltage	12V	21V
空载转速 No-load Speed	0/350-0/1350r/min	0/350-0/1350r/min
冲击数 Blows.per minute	0-21600ipm	0-21600ipm
扭力 Torque	17/19N.m	22/28N.m
电池容量 Battery Type	1500mAh	1500mAh
重量 Weight	18/19kgs	14/15kgs
装箱数 Pcs Per Carton	10PCS	5PCS
外箱尺寸 Carton Size	57x39.5x25.5cm	53.5x37.5x27.5cm

CORDLESS DRILL  
锂电钻

- 起拧螺丝  
Unscrewing screw
- 平钻钻孔  
Flat drilling
- 冲击钻孔  
Impact drilling



产品型号/货号	MT 7013A CD-21	MT 7013B CD-21
最大夹头直径 Max Chuck Capacity	10mm	10mm
额定电压 Rated Voltage	21V	21V
最大输出功率 Rated Input Power	315W	315W
空载转速 No-load Speed	0/350-0/1350r/min	0/350-0/1350r/min
冲击数 Blows.per minute	0-21600ipm	0-21600ipm
扭力 Torque	22/28N.m	22/28N.m
电池容量 Battery Type	1500mAh	1500mAh
重量 Weight	14/15kgs	14/15kgs
装箱数 Pcs Per Carton	5PCS	5PCS
外箱尺寸 Carton Size	53.5x37.5x27.5cm	53.5x37.5x27.5cm

**CORDLESS MULTIFUNCTIONAL TOOLS**

锂电万用宝

双速强劲冲击 轻松击穿混凝土  
Two-speed strong impact, easy to break through the concrete

持续续航电池包 一块电池可以用一天  
Continuous battery pack, a battery can be used for a day

合金精工双轴承 同心度高 打孔不偏离  
Alloy Seiko double bearing, high concentricity, drilling does not deviate



**New!**

电钻功能  
Drill function

角磨功能  
Angle grinder function

电锯功能  
Chain saw function



产品型号/货号	MT6013D		
最大直径 Max Capacity	Drill 10mm	Angle grinder 100/125mm	Chain saw 4 inch
额定电压 Rated Voltage	21V	21V	21V
空载转速 No-load Speed	0-220/0-1400r/min	0-4850/0-8500r/min	0-3600/0-6100r/min
重量 Weight	19/20kgs		
装箱数 Pcs Per Carton	5PCS		
外箱尺寸 Carton Size	53.5x37.5x27.5cm		

**CORDLESS DRILL**

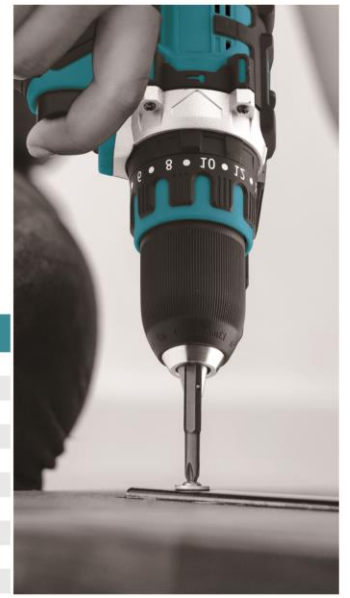
锂电钻

- 起拧螺丝  
Unscrewing screw
- 平钻钻孔  
Flat drilling
- 冲击钻孔  
Impact drilling



**New!**  
LI-ION

产品型号/货号	MT6018 CD-DW-21
最大夹头直径 Max Chuck Capacity	13mm
额定电压 Rated Voltage	21V
最大输出功率 Rated Input Power	320W
空载转速 No-load Speed	0-270/0-1500r/min
冲击数 Blows.per minute	0-23200ipm
扭力 Torque	35N.m
电池容量 Battery Type	1500mAh
重量 Weight	15/16kgs
装箱数 Pcs Per Carton	5PCS
外箱尺寸 Carton Size	53.5x37.5x27.5cm



**CORDLESS IMPACT DRILL**

锂电冲击钻

- 起拧螺丝  
Unscrewing screw
- 平钻钻孔  
Flat drilling
- 冲击钻孔  
Impact drilling

**New!**  
BRUSHLESS MOTOR  
无刷电机



产品型号/货号	MT1301		
最大夹头直径 Max Chuck Capacity	13mm	电池容量 Battery Type	1500mAh
额定电压 Rated Voltage	21V	重量 Weight	16.5/17.5kgs
最大输出功率 Rated Input Power	720W	装箱数 Pcs Per Carton	5PCS
空载转速 No-load Speed	0-1700r/min	外箱尺寸 Carton Size	60.5x43x32cm
冲击数 Blows.per minute	0-23200ipm		

**CORDLESS DRILL**

锂电钻

- 起拧螺丝  
Unscrewing screw
- 平钻钻孔  
Flat drilling
- 冲击钻孔  
Impact drilling



13mm带轴锁高品质金属夹头  
13mm high quality metal chuck with shaft lock

双速调节开关  
2-speeds control switch

21+1档大力调节  
21+1 gear torque adjustment

正反转调节开关  
Forward and reverse adjustment switch

电量提示灯  
Power indicator

变速调节  
Variable speed adjustment

纤细软胶手柄  
Soft rubber handle

LED灯  
LED light

**21V**  
LI-ION



散热口



调速开关



软胶舒适手柄



锁紧夹头



产品型号/货号	MT6013B CID-MT-21
最大夹头直径 Max Chuck Capacity	13mm
额定电压 Rated Voltage	12V-21V
最大输出功率 Rated Input Power	237-315W
空载转速 No-load Speed	0/350-0/1350r/min
冲击数 Blows.per minute	25650ipm
扭力 Torque	19-28N.m
电池容量 Battery Type	1500mAh
重量 Weight	18/19kgs
装箱数 Pcs Per Carton	5PCS
外箱尺寸 Carton Size	52.5x36x32cm

**CORDLESS DRILL**

锂电钻

- 起拧螺丝  
Unscrewing screw
- 平钻钻孔  
Flat drilling
- 冲击钻孔  
Impact drilling



With Magnet  
More Convenient

**12V**  
LI-ION

产品型号/货号	MT7112 CD-MT-12	MT6012 CD-MT-12
最大夹头直径 Max Chuck Capacity	10mm	10mm
额定电压 Rated Voltage	12V	12V
最大输出功率 Rated Input Power	237W	237W
空载转速 No-load Speed	0/350-0/1350r/min	0/350-0/1350r/min
冲击数 Blows.per minute	0-21600ipm	0-21600ipm
扭力 Torque	21/35N.m	19/21N.m
电池容量 Battery Type	1500mAh	1500mAh
重量 Weight	19.5/20.5kgs	18/19kgs
装箱数 Pcs Per Carton	10PCS	10PCS
外箱尺寸 Carton Size	59x43.5x27cm	56x37.5x25cm

**CORDLESS DRILL**

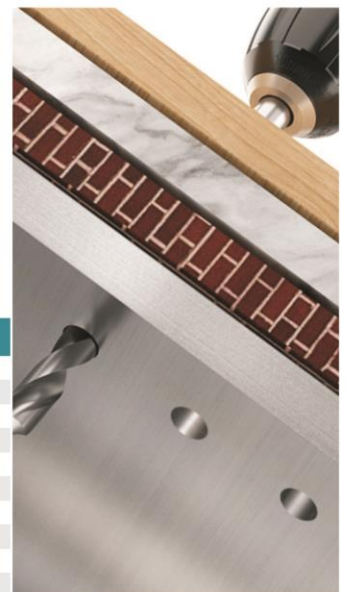
锂电钻

- 起拧螺丝  
Unscrewing screw
- 平钻钻孔  
Flat drilling
- 冲击钻孔  
Impact drilling



**12V**  
LI-ION

产品型号/货号	MT7012 CD-MT-12
最大夹头直径 Max Chuck Capacity	10mm
额定电压 Rated Voltage	12V
最大输出功率 Rated Input Power	237W
空载转速 No-load Speed	0/350-0/1350r/min
冲击数 Blows.per minute	0-21600ipm
扭力 Torque	19/21N.m
电池容量 Battery Type	1500mAh
重量 Weight	23/24kgs
装箱数 Pcs Per Carton	10PCS
外箱尺寸 Carton Size	59x48x27cm



**CORDLESS DRILL**

锂电钻

- 起拧螺丝  
Unscrewing screw
- 平钻钻孔  
Flat drilling
- 冲击钻孔  
Impact drilling



产品型号/货号	MT 6021 CD-MT-21	MT 7016 CD-MT-21
最大夹头直径 Max Chuck Capacity	10mm	10mm
额定电压 Rated Voltage	12V-21V	12V-21V
最大输出功率 Rated Input Power	237-315W	237-315W
空载转速 No-load Speed	0/350-0/1350r/min	0/350-0/1350r/min
冲击数 Blows.per minute	0-21600ipm	0-21600ipm
扭力 Torque	19-28N.m	19-28N.m
电池容量 Battery Type	1500mAh	1500mAh
重量 Weight	26/27kgs	26.5/27.5kgs
装箱数 Pcs Per Carton	10PCS	10PCS
外箱尺寸 Carton Size	59x43.5x27cm	63x54x28cm



**CORDLESS DRILL**

锂电钻

- 起拧螺丝  
Unscrewing screw
- 平钻钻孔  
Flat drilling
- 冲击钻孔  
Impact drilling



产品型号/货号	MT 6022 CD-MT-21	MT 6023 CD-MT-21
最大夹头直径 Max Chuck Capacity	10mm	13mm
额定电压 Rated Voltage	12V-21V	12V-21V
最大输出功率 Rated Input Power	315W	420W
空载转速 No-load Speed	0/350-0/1850r/min	0/350-400/1450r/min
冲击数 Blows.per minute	0-21600ipm	0-23200ipm
扭力 Torque	25-28N.m	35-38N.m
电池容量 Battery Type	1500mAh	1500mAh
重量 Weight	14.5/15.5kgs	17/18kgs
装箱数 Pcs Per Carton	5PCS	5PCS
外箱尺寸 Carton Size	54x31.5x28cm	52.5x36x32cm

**CORDLESS WRECH**

锂电扳手

- 起拧螺丝  
Unscrewing screw
- 平钻钻孔  
Flat drilling



产品型号/货号	MT 5148 CW-MT-12	MT 5188 CW-MT-36
最大套筒 Max Caoacity	M6-M10	M4-M24
额定电压 Rated Voltage	12V	36V
最大输出功率 Rated Input Power	287W	553W
空载转速 No-load Speed	0-2800r/min	0-2400r/min
冲击数 Blows.per minute	-	2100ipm
扭力 Torque	50N.m	280N.m
电池容量 Battery Type	1500mAh	2000mAh
重量 Weight	19.5/20.5kgs	18.5/19.5kgs
装箱数 Pcs Per Carton	10PCS	5PCS
外箱尺寸 Carton Size	59x43.5x27cm	52.5x36x32cm

**CORDLESS DRILL**

锂电钻

- 起拧螺丝  
Unscrewing screw
- 平钻钻孔  
Flat drilling
- 冲击钻孔  
Impact drilling



13mm带轴锁高品质金属夹头  
13mm high quality metal chuck with shaft lock

双速调节开关  
2-speeds control switch

21+1档大扭力调节  
21+1 gear torque adjustmen

电量提示灯  
Power quantity indicator

正反转调节开关  
Forward and reverse adjustment switch

变速调节  
Variable speed adjustment

纤细软胶手柄  
Soft rubber handle

LED灯  
LED light



**CORDLESS DRILL**

锂电钻

- 起拧螺丝  
Unscrewing screw
- 平钻钻孔  
Flat drilling
- 冲击钻孔  
Impact drilling



产品型号/货号	MT 6012C CD-MT-12	MT 6013A CID-MT-21
最大夹头直径 Max Chuck Capacity	10mm	13mm
额定电压 Rated Voltage	12V	12V-21V
最大输出功率 Rated Input Power	237W	237-315W
空载转速 No-load Speed	0/350-0/1350r/min	0/350-0/1350r/min
冲击数 Blows.per minute	0-25650ipm	0-25650ipm
扭力 Torque	17/19N.m	28N.m
电池容量 Battery Type	1500mAh	1500mAh
重量 Weight	23/24kgs	18/19kgs
装箱数 Pcs Per Carton	5PCS	5PCS
外箱尺寸 Carton Size	54x43x35.5cm	52.5x36x32cm

双速强劲冲击 轻松击穿混凝土  
Two-speed strong impact, easy to break through the concrete

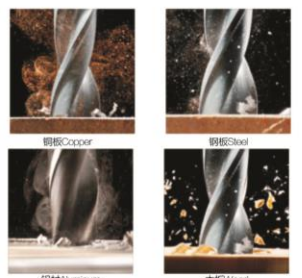
持续续航电池包 一块电池可以用一天  
Continuous battery pack, a battery can be used for a day

合金精工双轴承 同心度高 打孔不偏离  
Alloy Seiko double bearing, high concentricity, drilling does not deviate

多档扭力调节 方便不同材料钻孔  
Multi-stop torque adjustment, convenient for drilling different materials

大模数齿轮 品质高 扭矩大 输出更稳定  
Large modulus gear, high quality, high torque, more stable output

无极变速 按压力调节转速  
Infinite variable speed adjustment according to the pressure



散热口  
Heat sink



调速开关  
Speed control switch



软胶舒适手柄  
Soft rubber comfort handle



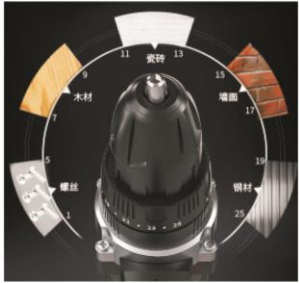
锁紧夹头  
Lock Chuck

**CORDLESS DRILL**  
锂电钻

- 起拧螺丝  
Unscrewing screw
- 平钻钻孔  
Flat drilling
- 冲击钻孔  
Impact drilling



**21V**  
LI-ION



产品型号/货号	DW 6013C CID-DW-21
最大夹头直径 Max Chuck Capacity	13mm
额定电压 Rated Voltage	12V-21V
最大输出功率 Rated Input Power	237-315W
空载转速 No-load Speed	0/350-0/1350r/min
冲击数 Blows.per minute	0-25650ipm
扭力 Torque	19-28N.m
电池容量 Battery Type	1500mAh
重量 Weight	18/19kgs
装箱数 Pcs Per Carton	5PCS
外箱尺寸 Carton Size	52.5x36x32cm



**CORDLESS DRILL**  
锂电钻

- 起拧螺丝  
Unscrewing screw
- 平钻钻孔  
Flat drilling
- 冲击钻孔  
Impact drilling



产品型号/货号	DW 6021A-1 CD-DW-21	DW 6021A-2 CD-DW-21
最大夹头直径 Max Chuck Capacity	10mm	10mm
额定电压 Rated Voltage	12V-21V	12V-21V
最大输出功率 Rated Input Power	237-315W	237-315W
空载转速 No-load Speed	0/350-0/1350r/min	0/350-0/1350r/min
冲击数 Blows.per minute	0-21600ipm	0-21600ipm
扭力 Torque	19-28N.m	19-28N.m
电池容量 Battery Type	1500mAh	1500mAh
重量 Weight	18/19kgs	18/19kgs
装箱数 Pcs Per Carton	10PCS	10PCS
外箱尺寸 Carton Size	59x43.5x27cm	59x43.5x27cm

**CORDLESS DRILL**  
锂电钻

- 12V
- 14.4V
- 18V



产品型号/货号	DW 6021B CD-DW-21	DW 6021C CD-DW-21
最大夹头直径 Max Chuck Capacity	10mm	13mm
额定电压 Rated Voltage	12V-21V	12V-21V
最大输出功率 Rated Input Power	237-315W	237-315W
空载转速 No-load Speed	0/350-0/1350r/min	0/350-0/1350r/min
冲击数 Blows.per minute	0-21600ipm	0-23200ipm
扭力 Torque	19-28N.m	19-28N.m
电池容量 Battery Type	1500mAh	1500mAh
重量 Weight	18/19kgs	14/15kgs
装箱数 Pcs Per Carton	10PCS	5PCS
外箱尺寸 Carton Size	59x43.5x27cm	45x33x30cm

**CORDLESS ANGLE GRINDER**  
锂电无刷角磨机

BRUSHLESS MOTOR  
无刷电机 **36V**  
LI-ION

BRUSHLESS MOTOR  
无刷电机 **36V**  
LI-ION



产品型号/货号	MT 6100 CAG-MT-36	MT 6115 CAG-MT-36
砂轮片直径 Disc Size	100/115/125mm	100/115/125mm
额定电压 Rated Voltage	36V	36V
最大输出功率 Rated Input Power	820W	820W
空载转速 No-load Speed	6500-7500r/min	6500-7500r/min
电池容量 Battery Type	2000mAh	2000mAh
重量 Weight	24/25kgs	24/25kgs
装箱数 Pcs Per Carton	5PCS	5PCS
外箱尺寸 Carton Size	60x41x35cm	60x41x35cm

**CORDLESS ANGLE GRINDER**  
锂电无刷角磨机

BRUSHLESS MOTOR  
无刷电机 **36V**  
LI-ION

BRUSHLESS MOTOR  
无刷电机 **36V**  
LI-ION



产品型号/货号	MT 6200VS CAG-MT-36	MT 6125B CAG-MT-36
砂轮片直径 Disc Size	100/115/125mm	100/115/125mm
额定电压 Rated Voltage	36V	36V
最大输出功率 Rated Input Power	820W	820W
空载转速 No-load Speed	6500-7500r/min	0-8500r/min
电池容量 Battery Type	2000mAh	2000mAh
重量 Weight	24/25kgs	24/25kgs
装箱数 Pcs Per Carton	5PCS	5PCS
外箱尺寸 Carton Size	60x41x35cm	60x41x35cm

**CORDLESS ROTARY HAMMER**  
锂电电锤

New!



产品型号/货号	RH 6022B CRH-MT-21	MT 6020 CRH-MT-21	MT 7020 CRH-MT-21
钻孔直径 Max Chuck Capacity	6/8/10mm	6/8/10mm	6/8/10mm
额定电压 Rated Voltage	21V	21V	21V
最大输出功率 Rated Input Power	656W	350W	350W
空载转速 No-load Speed	0-950r/min	0-800r/min	0-800r/min
冲击频率 Blows.per minute	0-4700ipm	0-4200ipm	0-4200ipm
电池容量 Battery Type	2000mAh	2000mAh	2000mAh
重量 Weight	18/19kgs	16.5/17.5kgs	18.5/19.5kgs
装箱数 Pcs Per Carton	5PCS	5PCS	5PCS
外箱尺寸 Carton Size	45x33x30cm	45x33x30cm	49x37x32.5cm

**CORDLESS ROTARY HAMMER**  
锂电电锤

BRUSHLESS MOTOR  
无刷电机 **36V**  
LI-ION

BRUSHLESS MOTOR  
无刷电机 **36V**  
LI-ION



产品型号/货号	MT 2400 CRH-MT-36	MT 2600 CRH-MT-36
钻孔直径 Max Chuck Capacity	24mm	26mm
额定电压 Rated Voltage	36V	36V
最大输出功率 Rated Input Power	717W	717W
空载转速 No-load Speed	0-950r/min	0-1000r/min
冲击频率 Blows.per minute	4700ipm	4700ipm
电池容量 Battery Type	2000mAh	2000mAh
重量 Weight	26/27kgs	28/29kgs
装箱数 Pcs Per Carton	4PCS	5PCS
外箱尺寸 Carton Size	49x43x35.5cm	58x44.5x34.5cm

**CORDLESS CHAIN SAW**  
锂电电链锯



大容量电池  
Large capacity battery

辅助手柄  
Auxiliary handle

注油口  
Oil inlet

加大护手挡板  
Enlarge the hand guard

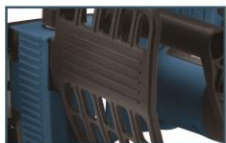
一体成型导板  
Integrated guide plate

数显  
Digital readout

高温淬火链条  
High temperature quenching chain



链条松紧旋钮  
Chain elastic knob



大护手挡板  
Big hand guard



强力散热口  
Cooling vent



包胶手柄  
Rubber-coated handle

**CORDLESS CHAIN SAW**  
锂电电链锯

BRUSHLESS MOTOR  
无刷电机

BRUSHLESS MOTOR  
无刷电机

36V  
LI-ION



产品型号/货号	MT 8016 CCS-MT-36	MT 8018 CCS-MT-36
导板尺寸 Guide Bar Size	10" /12"	10" /12"
额定电压 Rated Voltage	36V	36V
空载转速 No-load Speed	0-2800r/min	0-2800r/min
电池容量 Battery Type	2000mAh	2000mAh
重量 Weight	18.5/19.5kgs	18.5/19.5kgs
装箱数 Pcs Per Carton	4PCS	4PCS
外箱尺寸 Carton Size	70x38.5x30cm	70x38.5x30cm

**CORDLESS CHAIN SAW**  
锂电电链锯

12V  
LI-ION



21V  
LI-ION



BRUSHLESS MOTOR  
无刷电机

21V  
LI-ION



产品型号/货号	MT 8020 CCS-MT-12	MT 8019 CCS-MT-21	MT 8017 CCS-MT-21
导板尺寸 Guide Bar Size	4"	4" /6"	4" /6"
额定电压 Rated Voltage	12V	21V	21V
最大输出功率 Rated Input Power	275W	348W	348W
空载转速 No-load Speed	2500r/min	2850r/min	2850r/min
电池容量 Battery Type	1500mAh	1500mAh	1500mAh
重量 Weight	20/21kgs	19/20kgs	19/20kgs
装箱数 Pcs Per Carton	10PCS	5PCS	5PCS
外箱尺寸 Carton Size	62x35.5x43.5cm	68.5x44x24cm	68.5x44x24cm



**CORDLESS CHAIN SAW**  
锂电高枝锯

**CORDLESS CHAIN SAW**  
锂电电链锯

New!  
21V  
LI-ION



产品型号/货号	MT 8015 CCS-MT-21
导板尺寸 Guide Bar Size	4" /6"
额定电压 Rated Voltage	21V
最大输出功率 Rated Input Power	348W
空载转速 No-load Speed	2850r/min
电池容量 Battery Type	1500mAh
重量 Weight	22/23kgs
装箱数 Pcs Per Carton	1PCS
外箱尺寸 Carton Size	73x26x16cm



角度调节按钮  
Angle adjustment button



大功率电机  
High Power Motor



链条松紧调节  
Adjust chain tightness



**CORDLESS CIRCULAR SAW**  
锂电电圆锯



**CORDLESS RECIPROCATING SAW**  
锂电往复锯



**CORDLESS BLOWER**  
锂电吹风机



**CORDLESS PLANER**  
锂电电刨



产品型号/货号	MT5830 CCS-MT-36	产品型号/货号	MT3300
锯片直径 Blade Diameter	185mm	切割直径 Max Cutting Diameter	32mm
额定电压 Rated Voltage	36V	额定电压 Rated Voltage	21V
最大输出功率 Rated Input Power	922W	空载转速 No-load Speed	0.35s/cut
空载转速 No-load Speed	3450r/min	电池容量 Battery Type	1500mAh
电池容量 Battery Type	2000mAh	重量 Weight	14.5x15.5kgs
重量 Weight	18/19kgs	装箱数 Pcs Per Carton	5PCS
装箱数 Pcs Per Carton	4PCS	外箱尺寸 Carton Size	49x36x31.5cm
外箱尺寸 Carton Size	44x32x42cm		

产品型号/货号	MT6101 CB-MT-21	产品型号/货号	MT1900C CPS-MT-36
风量 Air Volume	2.6m³/min	刨刀尺寸 Max Cutting Diameter	82mm
额定电压 Rated Voltage	21V	额定电压 Rated Voltage	36V
空载转速 No-load Speed	12600-14700r/min	空载转速 No-load Speed	0-27500r/min
电池容量 Battery Type	1500mAh	电池容量 Battery Type	2000mAh
重量 Weight	13/14kgs	重量 Weight	14/15kgs
装箱数 Pcs Per Carton	6PCS	装箱数 Pcs Per Carton	4PCS
外箱尺寸 Carton Size	62x31.5x38.5cm	外箱尺寸 Carton Size	42.5x36x40.5cm

**CORDLESS PRUNING SHEARS**  
锂电园林剪



产品型号/货号	MT9188 CPS-MT-21	MT9190 CPS-MT-21	MT9192 CPS-MT-21
切割直径 Cutting Diameter	25mm	30mm	40mm
额定电压 Rated Voltage	21V	21V	21V
最大输出功率 Rated Input Power	40W	50W	60W
空载转速 No-load Speed	22000r/min	18000r/min	18000r/min
电池容量 Battery Type	1500mAh	1500mAh	1500mAh
重量 Weight	16/17kgs	16/17kgs	16/17kgs
装箱数 Pcs Per Carton	5PCS	5PCS	5PCS
外箱尺寸 Carton Size	49x36x31.5cm	49x36x31.5cm	49x36x31.5cm

**CORDLESS POLISHER**  
锂电抛光机



产品型号/货号	MT5020 CCP-MT-12-21	MT5021 MT-12-21
抛光轮尺寸 Disk Size	100/125mm	100/125mm
额定电压 Rated Voltage	12V	21V
柄长 Shaft	5/16"	5/16"
空载转速 No-load Speed	2000-2800rpm	0-1950/0-5600rpm
电池容量 Battery Type	1500mAh	1500mAh
重量 Weight	11/12kgs	12.5/13.5kgs
装箱数 Pcs Per Carton	5PCS	5PCS
外箱尺寸 Carton Size	45x33x30cm	45x33x30cm

**CORDLESS DRILL SETS 锂电钻套装**

产品型号/货号	MT6016 SETS
迷你锯	1pc MINI saw
电胶布	1pc electric tape
8件套筒组合	8pcs socket set
数显电笔	1pc Digital electroprobe
猫眼十字螺丝刀	1pc "+" type screwdriver
猫眼一字螺丝刀	1pc "-" type screwdriver
连接杆一个	1 pc connection rod
包胶美工刀	1pc utility knife
50长10支单头批组合	10pcs 50mm bit with one head
5片刀片组合	5pcs blade sets
可挂式内六角组合	8pcs 1.5-6 inner socket wrench set
木工钻头5,6,8	3pcs wood drill bit 4,5,8
麻花钻头5,6,8	3pcs Ti-coated drill bit 4,5,6
建工钻头5,6,8	3pcs Cr-plating drill bit 4,5,6
6寸双色套筒钳	1pc 6 inch cuttinig pliers
6寸双色套筒尖嘴钳	1pc 6 inch nipper pliers
羊角锤	1pc long handle hammer
8寸双色套筒活扳手	1pc 8" adjustable wrench
膨胀管, 螺丝组合	Expansion tube screw set
3米透明卷尺	1pc 3M tape
塑盒一只	1 pc BMC box
电钻1个	1 pc 12V cordless drill
电池包2个	2 pcs batteries
充电器1个	1 pc charger
重量Weight	25/26KG
装箱数PCS per carton	5PCS
外箱尺寸Carton size	58.5x44x35.5CM



**CORDLESS DRILL SETS 锂电钻套装**

产品型号/货号	MT7011 SETS
扁钻(16 18)	2 pc Flat Drill(16 18)
麻花钻(1.5 2 2.5 3 4 5 6 8)	8 pc Twist Drill(1.5 2 2.5 3 4 5 6 8)
木工钻(4 5 6 8)	4 pc wood drill bit(4 5 6 8)
建工钻(3 4 5 6 8)	5pc Cr-plating drill bit(3 4 5 6 8)
有柄镀锌套筒(5 6 7 8 9 10 11)	7 pc sleeve with handle (5 6 7 8 9 10 11)
25L 镀铬一字批头 4#	1 pc 25L Chrome "-" type drill bit 4#
26L 镀铬一字批头 5#	1 pc 26L Chrome "-" type drill bit 5#
27L 镀铬一字批头 6#	1 pc 27L Chrome "-" type drill bit 6#
25L 镀铬十字批头 1#	1 pc 25L Chrome "+" type drill bit 1#
26L 镀铬十字批头 2#	1 pc 26L Chrome "+" type drill bit 2#
27L 镀铬十字批头 3#	1 pc 27L Chrome "+" type drill bit 3#
25L 镀铬米字批头 1#	1 pc 25L Chrome "米" type drill bit 1#
26L 镀铬米字批头 2#	1 pc 26L Chrome "米" type drill bit 2#
25L 镀铬T型批头 20#	1 pc 25L Chrome "T" type drill bit 20#
25L 镀铬T型批头 25#	1 pc 25L Chrome "T" type drill bit 25#
50L 镀铬一字批头 5#	1 pc 50L Chrome "-" type drill bit 5#
51L 镀铬一字批头 6#	1 pc 51L Chrome "-" type drill bit 6#
50L 镀铬十字批头 1#	1 pc 50L Chrome "+" type drill bit 1#
51L 镀铬十字批头 2#	1 pc 51L Chrome "+" type drill bit 2#
50L 镀铬T型批头 20#	1 pc 50L Chrome "T" type drill bit 20#
51L 镀铬T型批头 25#	1 pc 51L Chrome "T" type drill bit 25#
65L一体开槽接杆	1 pc 65L connection rod
塑盒一只	1 pc BMC box
电钻1个	1 pc 21V cordless drill
电池包2个	2 pcs batteries
充电器1个	1 pc big charger
重量Weight	19.5/20.5KG
装箱数PCS per carton	5PCS
外箱尺寸Carton size	51.5x40x32.5CM



**CORDLESS DRILL SETS 锂电钻套装**

产品型号/货号	MT7013 SETS
扁钻(16 18)	2 pc Flat Drill(16 18)
麻花钻(1.5 2 2.5 3 4 5 6 8)	8 pc Twist Drill(1.5 2 2.5 3 4 5 6 8)
木工钻(4 5 6 8)	4 pc wood drill bit(4 5 6 8)
建工钻(3 4 5 6 8)	5pc Cr-plating drill bit(3 4 5 6 8)
有柄镀锌套筒(5 6 7 8 9 10 11)	7 pc sleeve with handle (5 6 7 8 9 10 11)
25L 镀铬一字批头 4#	1 pc 25L Chrome "-" type drill bit 4#
26L 镀铬一字批头 5#	1 pc 26L Chrome "-" type drill bit 5#
27L 镀铬一字批头 6#	1 pc 27L Chrome "-" type drill bit 6#
25L 镀铬十字批头 1#	1 pc 25L Chrome "+" type drill bit 1#
26L 镀铬十字批头 2#	1 pc 26L Chrome "+" type drill bit 2#
27L 镀铬十字批头 3#	1 pc 27L Chrome "+" type drill bit 3#
25L 镀铬米字批头 1#	1 pc 25L Chrome "米" type drill bit 1#
26L 镀铬米字批头 2#	1 pc 26L Chrome "米" type drill bit 2#
25L 镀铬T型批头 20#	1 pc 25L Chrome "T" type drill bit 20#
25L 镀铬T型批头 25#	1 pc 25L Chrome "T" type drill bit 25#
50L 镀铬一字批头 5#	1 pc 50L Chrome "-" type drill bit 5#
51L 镀铬一字批头 6#	1 pc 51L Chrome "-" type drill bit 6#
50L 镀铬十字批头 1#	1 pc 50L Chrome "+" type drill bit 1#
51L 镀铬十字批头 2#	1 pc 51L Chrome "+" type drill bit 2#
50L 镀铬T型批头 20#	1 pc 50L Chrome "T" type drill bit 20#
51L 镀铬T型批头 25#	1 pc 51L Chrome "T" type drill bit 25#
65L一体开槽接杆	1 pc 65L connection rod
塑盒一只	1 pc BMC box
电钻1个	1 pc 21V cordless drill
电池包2个	2 pcs batteries
充电器1个	1 pc big charger
重量Weight	19.5/20.5KG
装箱数PCS per carton	5PCS
外箱尺寸Carton size	51.5x40x32.5CM



**CORDLESS DRILL SETS 锂电钻套装**

产品型号/货号	MT6018 SETS
扁钻(16 18)	2 pc Flat Drill(16 18)
麻花钻(1.5 2 2.5 3 4 5 6 8)	8 pc Twist Drill(1.5 2 2.5 3 4 5 6 8)
木工钻(4 5 6 8)	4 pc wood drill bit(4 5 6 8)
建工钻(3 4 5 6 8)	5pc Cr-plating drill bit(3 4 5 6 8)
有柄镀锌套筒(5 6 7 8 9 10 11)	7 pc sleeve with handle (5 6 7 8 9 10 11)
25L 镀铬一字批头 4#	1 pc 25L Chrome "-" type drill bit 4#
26L 镀铬一字批头 5#	1 pc 26L Chrome "-" type drill bit 5#
27L 镀铬一字批头 6#	1 pc 27L Chrome "-" type drill bit 6#
25L 镀铬十字批头 1#	1 pc 25L Chrome "+" type drill bit 1#
26L 镀铬十字批头 2#	1 pc 26L Chrome "+" type drill bit 2#
27L 镀铬十字批头 3#	1 pc 27L Chrome "+" type drill bit 3#
25L 镀铬米字批头 1#	1 pc 25L Chrome "米" type drill bit 1#
26L 镀铬米字批头 2#	1 pc 26L Chrome "米" type drill bit 2#
25L 镀铬T型批头 20#	1 pc 25L Chrome "T" type drill bit 20#
25L 镀铬T型批头 25#	1 pc 25L Chrome "T" type drill bit 25#
50L 镀铬一字批头 5#	1 pc 50L Chrome "-" type drill bit 5#
51L 镀铬一字批头 6#	1 pc 51L Chrome "-" type drill bit 6#
50L 镀铬十字批头 1#	1 pc 50L Chrome "+" type drill bit 1#
51L 镀铬十字批头 2#	1 pc 51L Chrome "+" type drill bit 2#
50L 镀铬T型批头 20#	1 pc 50L Chrome "T" type drill bit 20#
51L 镀铬T型批头 25#	1 pc 51L Chrome "T" type drill bit 25#
65L一体开槽接杆	1 pc 65L connection rod
塑盒一只	1 pc BMC box
电钻1个	1 pc 21V cordless drill
电池包2个	2 pcs batteries
充电器1个	1 pc big charger
重量Weight	20.5/21.5KG
装箱数PCS per carton	5PCS
外箱尺寸Carton size	51.5x40x32.5CM





13PCS

**CORDLESS DRILL & WRENCH SETS**

锂电钻&扳手套装

产品型号/货号	CD08 SETS
一体连接杆	1pc extension bar
木工钻 (4.5.6)	3pcs Wood drill bit (4.5.6)
麻花钻(4.5.6)	3pcs Twist drill bit (4.5.6)
6个批头	6 pcs screwdriver bits
塑盒一只	1 pc BMC box
电池包2个	2 pcs batteries
充电器1个	1 pc charger
扳手一个	1pc cordless wrench machine(12V)
电钻一个(不带冲击)	1pc cordless drill machine(12V/without impact)
重量Weight	18/17KG
装箱数PCS per carton	5PCS
外箱尺寸Carton size	52.5x36x32CM



13PCS

**CORDLESS DRILL SETS**

锂电钻套装

产品型号/货号	CD11 SETS
一体连接杆	1pc extension bar
木工钻 (4.5.6)	3pcs Wood drill bit (4.5.6)
麻花钻(4.5.6)	3pcs Twist drill bit (4.5.6)
6个批头	6 pcs screwdriver bits
塑盒一只	1 pc BMC box
电池包2个	2 pcs batteries
充电器1个	1 pc charger
电钻一个(带冲击)	1pc cordless drill machine(with impact)
电钻一个(不带冲击)	1pc cordless drill machine(without impact)
重量Weight	18/17KG
装箱数PCS per carton	5PCS
外箱尺寸Carton size	52.5x36x32CM



4PCS

**CORDLESS DRILL & WRENCH SETS**

锂电钻&扳手套装

产品型号/货号	CW02 SETS
4个套筒 (17.19.21.23)	4pcs socket set (17.19.21.23)
塑盒一只	1 pc BMC box
电池包2个	2 pcs batteries
大充电器1个	1 pc big charger
扳手一个	1pc cordless wrench machine
电钻一个	1pc cordless drill machine
重量Weight	26/25KG
装箱数PCS per carton	5PCS
外箱尺寸Carton size	54x43x35.5CM

**CORDLESS WRENCH & ANGLE GRINDER SETS**

锂电钻&角磨套装



4PCS

产品型号/货号	AW02 SETS
4个套筒 (17.19.21.23)	4pcs socket set (17.19.21.23)
手柄一个	1pc Handle
扳手1个	1pc spanner
砂轮罩一个	1pc Wheel cover
塑盒一只	1 pc BMC box
电池包2个	2 pcs batteries
大充电器1个	1 pc big charger
角磨机1个	1 pc 36V cordless angle grinder machine
扳手1个	1 pc 36V cordless wrench
重量Weight	32.5/31.5KG
装箱数PCS per carton	5PCS
外箱尺寸Carton size	59x53x36CM

**CORDLESS DRILL & ROTARY HAMMER SETS**

锂电钻&电锤套装



6PCS

产品型号/货号	HD02 SETS
电锤圆柄钻头 (6-8-10)	round handle hammer drill bits (6-8-10)
一体连接杆	1pc extension bar
手柄一个	1pc Handle
油壶一个	1pc Oil can
电池包2个	2 pcs batteries
充电器1个	1 pc charger
电锤一个(26mm)	1pc rotary hammer (26mm)
电钻一个	1pc cordless drill machine (without impact)
重量Weight	20/19KG
装箱数PCS per carton	2PCS
外箱尺寸Carton size	53.5x24.5x38.5CM

**CORDLESS DRILL SETS**

锂电钻套装



24PCS

产品型号/货号	MT6012C SETS
套筒 (5-13)	9 pcs socket set (5-13)
接珠	1 pc connection Rod
一体连接杆	1pc extension bar
木工钻 (4.5.6)	3pcs Wood drill bit (4.5.6)
麻花钻(4.5.6)	3pcs Twist drill bit (4.5.6)
6个批头	6 pcs screwdriver bits
1支250mm万向软管	1 pc 250mm multi-directional soft tube
塑盒一只	1 pc BMC box
电钻1个	1 pc 12V cordless drill
电池包2个	2 pcs batteries
充电器1个	1 pc charger
重量Weight	23/22KG
装箱数PCS per carton	10PCS
外箱尺寸Carton size	59x43.5x27CM

**CORDLESS DRILL SETS**

锂电钻套装



30PCS

产品型号/货号	MT7112 SETS
套筒 (5-13)	9 pcs socket set (5-13)
接珠	1 pc connection Rod
一体连接杆	1pc extension bar
木工钻 (4.5.6)	3pcs Wood drill bit (4.5.6)
麻花钻(4.5.6)	3pcs Twist drill bit (4.5.6)
6个批头	6 pcs screwdriver bits
1支250mm万向软管	1 pc 250mm multi-directional soft tube
3、4、5膨胀管, 螺丝组合	3pcs expansion tube (3, 4, 5) screw set
塑盒一只	1 pc BMC box
电钻1个	1 pc 12V cordless drill
电池包2个	2 pcs batteries
充电器1个	1 pc charger
重量Weight	24/23KG
装箱数PCS per carton	10PCS
外箱尺寸Carton size	59x48x27CM

**CORDLESS DRILL SETS**

锂电钻套装

24PCS



产品型号/货号	MT6021 SETS
套筒 (5-13)	9 pcs socket set (5-13)
接珠	1 pc connection Rod
一体连接杆	1pc extension bar
木工钻 (4.5.6)	3pcs Wood drill bit (4.5.6)
麻花钻(4.5.6)	3pcs Twist drill bit (4.5.6)
6个批头	6 pcs screwdriver bits
1支250mm万向软管	1 pc 250mm multi-directional soft tube
塑盒一只	1 pc BMC box
电钻1个	1 pc 12V cordless drill
电池包2个	2 pcs batteries
充电器1个	1 pc charger
重量Weight	24/23KG
装箱数PCS per carton	10PCS
外箱尺寸Carton size	59x43.5x27CM

**CORDLESS DRILL SETS**

锂电钻套装

26PCS



产品型号/货号	MT6012 SETS
套筒 (5-13)	9 pcs socket set (5-13)
万向软管	1 pc multi-directional soft tube
10件套批头组合	10pcs bit sets
批头一个	1pc bit
一体连接杆	1pc extension bar
麻花钻4支	4pcs Twist drill bit
塑盒一只	1 pc BMC box
电钻1个	1 pc 12V cordless drill
电池包2个	2 pcs batteries
充电器1个	1 pc charger
重量Weight	23/22KG
装箱数PCS per carton	10PCS
外箱尺寸Carton size	59x43.5x27CM

**CORDLESS DRILL SETS**

锂电钻套装

产品型号/货号	DW6021A-1 SETS
套筒 (5-13)	9 pcs socket set (5-13)
接珠	1 pc connection Rod
一体连接杆	1pc extension bar
木工钻 (4.5.6)	3pcs Wood drill bit (4.5.6)
麻花钻(4.5.6)	3pcs Twist drill bit (4.5.6)
6个批头	6 pcs screwdriver bits
1支250mm万向软管	1 pc 250mm multi-directional soft tube
塑盒一只	1 pc BMC box
电钻1个	1 pc 12V cordless drill
电池包2个	2 pcs batteries
充电器1个	1 pc charger
重量Weight	22.5/21.5KG
装箱数PCS per carton	10PCS
外箱尺寸Carton size	59x43.5x27CM

**CORDLESS DRILL SETS**

锂电钻套装

产品型号/货号	MT7016 SETS
套筒 (5-13)	9 pcs socket set (5-13)
接珠一个	1pc connection Rod
一体连接杆	1pc extension bar
3,4,5膨胀管, 螺丝组合	3pcs exoansion tube (3,4,5) screw set
批头6根	6pcs bit
木工钻3根	3pcs Wood drill bit
麻花钻2根	2pcs Twist drill bit
建工钻1根	1pc Concrete drill bit
万向软管	1 pc multi-directional soft tube
塑盒一只	1 pc BMC box
电钻1个	1 pc 12V cordless drill
电池包2个	2 pcs batteries
充电器1个	1 pc charger
重量Weight	29/28KG
装箱数PCS per carton	10PCS
外箱尺寸Carton size	63x54x28CM

**CORDLESS DRILL SETS**

锂电钻套装

产品型号/货号	MT6013A SETS
接珠一个	1pc connection Rod
一体连接杆	1pc extension bar
美工刀	1pc utility knife
木工钻 (4.5.6)	3pcs Wood drill bit (4.5.6)
麻花钻(4.5.6)	3pcs Twist drill bit (4.5.6)
6个批头	6 pcs screwdriver bits
1支250mm万向软管	1 pc 250mm multi-directional soft tube
套筒 (5-13)	9 pcs socket set (5-13)
3米透明卷尺	1pc 3M tape
塑盒一只	1 pc BMC box
电钻1个	1 pc 12V cordless drill
电池包2个	2 pcs batteries
大充电器1个	1 pc big charger
重量Weight	19.5/18.5KG
装箱数PCS per carton	5PCS
外箱尺寸Carton size	52.5x36x32CM

**CORDLESS IMPACT DRILL SETS**

锂电冲击钻套装

23PCS



产品型号/货号	DW6021A-2 SETS
套筒 (5-13)	9 pcs socket set (5-13)
美工刀	1pc utility knife
电胶布	1pc electric tape
1米卷尺	1pc 1M tape
万向软管	1 pc multi-directional soft tube
50L一字批头	1pc 50L "-"type screwdriver bit
50L十字批头	1pc 50L "+"type screwdriver bit
50L一字批头 V5	1pc 50L "-"type screwdriver bit V5
50L一字批头 V6	1pc 50L "-"type screwdriver bit V6
50L 梅花批头 T25	1pc 50L "T" type screwdriver bit T25
50L 梅花批头 T20	1pc 50L "T" type screwdriver bit T20
25长接珠	25L connection Rod
6.5*42 一体连接杆	1pc extension bar (6.5*42)
木工钻 (4.5.6)	3pcs Wood drill bit (4.5.6)
麻花钻(4.5.6)	3pcs Twist drill bit (4.5.6)
塑盒一只	1 pc BMC box
电钻1个	1 pc 12V cordless drill
电池包2个	2 pcs batteries
充电器1个	1 pc charger
重量Weight	16/15KG
装箱数PCS per carton	5PCS
外箱尺寸Carton size	45x33x30CM



24PCS



30PCS



26PCS

**CORDLESS DRILL SETS**

锂电钻套装



117PCS

产品型号/货号	MT6012C SETS
迷你锯	1pc MINI saw
电胶布	1pc electric tape
5-13(9+件套筒组合)	9pcs socket set(5-13)
数显电笔	1pc Digital electroprobe
猫眼十字螺丝刀	1pc "+"type screwdriver
猫眼一字螺丝刀	1pc "-"type screwdriver
包胶美工刀	1pc utility knife
50长10支单头批组合	10pcs 50mm bit with one head
5片刀片组合	5pcs blade sets
可挂式内六角组合	9pcs 1.5-6 ineer socket wrench set
2.5一字电子批	1pc 2.5 "-"type screwdriver bit
2.5十字电子批	1pc 2.5 "+"type screwdriver bit
3.0一字电子批	1pc 3.0 "-"type screwdriver bit
3.0十字电子批	1pc 3.0 "+"type screwdriver bit
镀锌麻花钻4,5,6	3pcs Ti-coated drill bit 4,5,6
镀锌扁钻16	Ti-coated flat drill bit
三尖木工钻头4,5,8	3pcs wood drill bit 4,5,8
6寸双色套柄钢丝钳	1pc 6 inch cutting pliers
6寸双色套柄尖嘴钳	1pc 6 inch nipper pliers
羊角锤	1pc long handle hammer
8寸双色套柄活扳手	1pc 8" adjustable wrench
3,4,5膨胀管, 螺丝组合	3pcs expansion tube (3,4,5) screw set,
3米透明卷尺	1pc 3M tape
电筒	1pc Torch
塑盒一只	1 pc BMC box
电钻1个	1 pc 12V cordless drill
电池包2个	2 pcs batteries
充电器1个	1 pc charger
重量Weight	24/23KG
装箱数PCS per carton	5PCS
外箱尺寸Carton size	54x43x35.5CM

**CORDLESS DRILL SETS**

锂电钻套装



117PCS

产品型号/货号	MT7012 SETS
迷你锯	1pc MINI saw
电胶布	1pc electric tape
5-13(9+件套筒组合)	9pcs socket set(5-13)
数显电笔	1pc Digital electroprobe
猫眼十字螺丝刀	1pc "+"type screwdriver
猫眼一字螺丝刀	1pc "-"type screwdriver
包胶美工刀	1pc utility knife
50长10支单头批组合	10pcs 50mm bit with one head
5片刀片组合	5pcs blade sets
可挂式内六角组合	9pcs 1.5-6 ineer socket wrench set
2.5一字电子批	1pc 2.5 "-"type screwdriver bit
2.5十字电子批	1pc 2.5 "+"type screwdriver bit
3.0一字电子批	1pc 3.0 "-"type screwdriver bit
3.0十字电子批	1pc 3.0 "+"type screwdriver bit
镀锌麻花钻4,5,6	3pcs Ti-coated drill bit 4,5,6
镀锌扁钻16	Ti-coated flat drill bit
三尖木工钻头4,5,8	3pcs wood drill bit 4,5,8
6寸双色套柄钢丝钳	1pc 6 inch cutting pliers
6寸双色套柄尖嘴钳	1pc 6 inch nipper pliers
羊角锤	1pc long handle hammer
8寸双色套柄活扳手	1pc 8" adjustable wrench
3,4,5膨胀管, 螺丝组合	3pcs expansion tube (3,4,5) screw set,expansion
3米透明卷尺	1pc 3M tape
电筒	1pc Torch
塑盒一只	1 pc BMC box
电钻1个	1 pc 12V cordless drill
电池包2个	2 pcs batteries
充电器1个	1 pc charger
重量Weight	24/23KG
装箱数PCS per carton	5PCS
外箱尺寸Carton size	54x43x35.5CM

**CORDLESS DRILL SETS**

锂电钻套装



117PCS

产品型号/货号	MT6012 SETS
迷你锯	1pc MINI saw
电胶布	1pc electric tape
5-13(9+件套筒组合)	9pcs socket set(5-13)
数显电笔	1pc Digital electroprobe
猫眼十字螺丝刀	1pc "+"type screwdriver
猫眼一字螺丝刀	1pc "-"type screwdriver
包胶美工刀	1pc utility knife
50长10支单头批组合	10pcs 50mm bit with one head
5片刀片组合	5pcs blade sets
可挂式内六角组合	9pcs 1.5-6 ineer socket wrench set
2.5一字电子批	1pc 2.5 "-"type screwdriver bit
2.5十字电子批	1pc 2.5 "+"type screwdriver bit
3.0一字电子批	1pc 3.0 "-"type screwdriver bit
3.0十字电子批	1pc 3.0 "+"type screwdriver bit
镀锌麻花钻4,5,6	3pcs Ti-coated drill bit 4,5,6
镀锌扁钻16	Ti-coated flat drill bit
三尖木工钻头4,5,8	3pcs wood drill bit 4,5,8
6寸双色套柄钢丝钳	1pc 6 inch cutting pliers
6寸双色套柄尖嘴钳	1pc 6 inch nipper pliers
羊角锤	1pc long handle hammer
8寸双色套柄活扳手	1pc 8" adjustable wrench
3,4,5膨胀管, 螺丝组合	3pcs expansion tube (3,4,5) screw set
3米透明卷尺	1pc 3M tape
电筒	1pc Torch
塑盒一只	1 pc BMC box
电钻1个	1 pc 12V cordless drill
电池包2个	2 pcs batteries
充电器1个	1 pc charger
重量Weight	24/23KG
装箱数PCS per carton	5PCS
外箱尺寸Carton size	54x43x35.5CM

**CORDLESS DRILL SETS**

锂电钻套装



75PCS

产品型号/货号	DW6021A SETS
40件套批头组合(25mm)	40pcs bit sets (25mm)
六角风批头4支 (8-10-12-13)	4pcs hexagonal bits
一体连接杆	1pc extension bar
木工倒三角器12	1pc Inverted triangle for wood(12)
50mm 批头组合	40pcs bit sets (50mm)
110mm 双批头	110mm Double bit
木工钻(4.5,6,8,10)	5pcs Wood drill bit (4.5,6,8,10)
麻花钻7根(3/3.5/4/4.5/5/5.5/6/6.5)	7pcs Twist drill bit (3/3.5/4/4.5/5/5.5/6/6.5)
木工钻5根(4.5,6,7,8)	5pcs Concrete drill bit (4.5,6,7,8)
扁钻 (16,20)	2pcs flat drill (16,20)
塑盒一只	1 pc BMC box
电钻1个	1 pc 21V cordless drill
电池包2个	2 pcs batteries
充电器1个	1 pc big charger
重量Weight	18/17KG
装箱数PCS per carton	4PCS
外箱尺寸Carton size	55x43.5x32CM

**CORDLESS DRILL SETS**

锂电钻套装



148PCS

产品型号/货号	MT7012 SETS
批头可转换螺丝刀	1pc bit screwdriver with be convertible
1米卷尺	1pc 1M tape
60件套批头组合	60pcs bit sets
电胶布	1pc electric tape
木工钻6根	6pcs Wood drill bit
麻花钻2根	2pcs Twist drill bit
建工钻5根	5pcs Concrete drill bit
批头2根	2pcs screwdriver bit
一体连接杆	1pc extension bar
万向软管	1 pc multi-directional soft tube
3,4,5膨胀管, 螺丝组合	3pcs expansion tube (3,4,5) screw set
套筒 (5-13)	9 pcs socket set (5-13)
塑盒一只	1 pc BMC box
电钻1个	1 pc 12V cordless drill
电池包2个	2 pcs batteries
充电器1个	1 pc charger
重量Weight	17/16KG
装箱数PCS per carton	5PCS
外箱尺寸Carton size	45x33x30CM

**CORDLESS IMPACT DRILL SETS**

锂电冲击钻套装



26PCS

产品型号/货号	MT6013B SETS
接珠一个	1pc connection Rod
一体连接杆	1pc extension bar
美工刀	1pc utility knife
木工钻 (4,5,6)	3pcs Wood drill bit (4,5,6)
麻花钻(4,5,6)	3pcs Twist drill bit (4,5,6)
6个批头	6 pcs screwdriver bits
1支250mm万向软管	1 pc 250mm multi-directional soft tube
套筒 (5-13)	9 pcs socket set (5-13)
3米透明卷尺	1pc 3M tape
塑盒一只	1 pc BMC box
电钻1个	1 pc 12V cordless drill
电池包2个	2 pcs batteries
大充电器1个	1 pc big charger
重量Weight	19.5/18.5KG
装箱数PCS per carton	5PCS
外箱尺寸Carton size	52.5x36x32CM

**CORDLESS POLISHER SETS**

锂电抛光机套装



8PCS

产品型号/货号	MT5020 SETS
手柄一个	1pc Handle
抛光盘	1pc Polishing disc
抛光棉	1pc Polishing cotton
塑盒一只	1 pc BMC box
抛光机1个	1 pc 12V cordless polisher
电池包2个	2 pcs batteries
充电器1个	1 pc charger
重量Weight	12/11KG
装箱数PCS per carton	5PCS
外箱尺寸Carton size	45x33x30CM

**CORDLESS WRENCH SETS**

锂电扳手套装



4PCS

产品型号/货号	MT5189 SETS
4个套筒 (17,19,21,23)	4pcs socket set (17,19,21,23)
塑盒一只	1 pc BMC box
扳手1个	1 pc 36V cordless wrench
电池包2个	2 pcs batteries
大充电器1个	1 pc big charger
重量Weight	21/20KG
装箱数PCS per carton	5PCS
外箱尺寸Carton size	52.5x36x32CM

**CORDLESS DRILL SETS**

锂电钻套装



4PCS

产品型号/货号	MT6012 SETS
电钻一个	1pc cordless drill machine (without impact)
电池包2个	2 pcs batteries
老鼠充电器1个	1 pc charger
重量Weight	19/20KG
装箱数PCS per carton	10PCS
外箱尺寸Carton size	70x46.5x25CM

**CORDLESS ROTARY HAMMER SETS**

锂电电锤套装



28PCS

产品型号/货号	MT7020 SETS
套筒 (5-13)	9 pcs socket set (5-13)
接珠	1 pc connection Rod
一体连接杆	1pc extension bar
木工钻 (4,5,6)	3pcs Wood drill bit (4,5,6)
麻花钻(4,5,6)	3pcs Twist drill bit (4,5,6)
6个批头	6 pcs screwdriver bits
1支250mm万向软管	1 pc 250mm multi-directional soft tube
电锤圆柄钻头 (6-8-10)	round handle hammer drill bits (6-8-10)
导尺1支	1pc Guide ruler
塑盒一只	1 pc BMC box
电锤1个	1 pc 21V cordless rotary hammer
电池包2个	2 pcs batteries
充电器1个	1 pc charger
重量Weight	18.5/19.5KG
装箱数PCS per carton	5PCS
外箱尺寸Carton size	49x37x32.5CM

**CORDLESS ROTARY HAMMER SETS**

锂电电锤套装



产品型号/货号	RH6022B SETS
套筒 (5-13)	9 pcs socket set (5-13)
接珠	1 pc connection Rod
一体连接杆	1pc extension bar
木工钻 (4,5,6)	3pcs Wood drill bit (4,5,6)
麻花钻(4,5,6)	3pcs Twist drill bit (4,5,6)
6个批头	6 pcs screwdriver bits
1支250mm万向软管	1 pc 250mm multi-directional soft tube
电锤圆柄钻头 (6-8-10)	round handle hammer drill bits (6-8-10)
导尺1支	1pc Guide ruler
塑盒一只	1 pc BMC box
电锤1个	1 pc 21V cordless rotary hammer
电池包2个	2 pcs batteries
充电器1个	1 pc charger
重量Weight	18.5/19.5KG
装箱数PCS per carton	5PCS
外箱尺寸Carton size	49x37x32.5CM

5PCS

**CORDLESS ROTARY HAMMER SETS**

锂电电锤套装

产品型号/货号	MT2400 SETS
电锤圆柄钻头 (6-8-10)	round handle hammer drill bits (6-8-10)
尖凿一根	1pc pointed chisel
扁凿一根	1pc flat chisel
塑盒一只	1 pc BMC box
电锤1个	1 pc 36V cordless rotary hammer
电池包2个	2 pcs batteries
大充电器1个	1 pc big charger
重量Weight	26/27KG
装箱数PCS per carton	4PCS
外箱尺寸Carton size	49x43x35.5CM



9PCS

**CORDLESS ANGLE GRINDER**

锂电角磨

产品型号/货号	MT6100 SETS
手柄一个	1pc Handle
扳手1个	1pc spanner
砂轮罩一个	1pc Wheel cover
塑盒一只	1 pc BMC box
角磨机1个	1 pc 36V cordless angle grinder machine
电池包2个	2 pcs batteries
大充电器1个	1 pc big charger
重量Weight	24/25KG
装箱数PCS per carton	5PCS
外箱尺寸Carton size	60x41x35CM



9PCS

**CORDLESS CHAIN SAW**

锂电链锯

产品型号/货号	MT8018 SETS
链条一根	1pc chain
导板一个 (10/11.5inc)	1pc Guides (10/11.5inc)
扳手1个	1pc spanner
挡板一个	1pc Baffle
塑盒一只	1 pc BMC box
锂电链锯1个	1 pc 36V cordless chain saw machine
电池包2个	2 pcs batteries
大充电器1个	1 pc big charger
重量Weight	18.5/19.5KG
装箱数PCS per carton	4PCS
外箱尺寸Carton size	70x38.5x30CM



**IMPACT  
DRILL**  
冲击钻

软皮包胶手柄 握持舒适 干活轻松不疲劳  
Soft leather bag rubber handle, holding comfortable, easy to work without fatigue

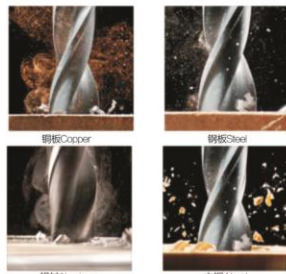
强劲电机 动力强劲 穿透力更强  
Strong motor, strong power, more powerful penetration

合金精工双轴承 同心度高 打孔不偏离  
Alloy Seiko double bearing, high concentricity, drilling does not deviate

多档扭力调节 方便不同材料钻孔  
Multi-stop torque adjustment, convenient for drilling different materials

大模数齿轮 品质高 扭矩大 输出更稳定  
Large modulus gear, high quality, high torque, more stable output

无极变速 按压力调节转速  
Infinite variable speed adjustment according to the pressure



**ELECTRIC  
DRILL**  
电钻

**New!**



**IMPACT  
DRILL**  
冲击钻

**New!**



产品型号/货号	MT 6012B CD-MT-12	MT 6013 CID-MT-21
钻孔直径 Max Drill Capacity	10mm(3/8")	13mm
额定电压 Rated Voltage	240/110V~	240/110V~
额定频率 Rated Frequency	50/60Hz	50/60Hz
输出功率 Rated Input Power	450W	710W
空载转速 No-load Speed	0-2800r/min	0-3200r/min
重量 Weight	15/16kgs	24/25kgs
装箱数 Pcs Per Carton	10PCS	10PCS
外箱尺寸 Carton Size	50x36.5x27.5cm	55.5x38.5x28.5cm



高耐用夹头  
High durability chuck



辅助手柄  
Auxiliary handle



软皮包胶  
Comfortable grip

**ELECTRIC DRILL**  
手电钻



产品型号/货号	MT6011 ED-MT-10	MT6011A ED-MT-10	MK6012 ED-MT-10
钻孔直径 Max Drill Capacity	10mm	10mm(3/8")	10mm
额定电压 Rated Voltage	240/110V~	240/110V~	240/110V~
额定频率 Rated Frequency	50/60Hz	50/60Hz	50/60Hz
输出功率 Rated Input Power	560W	560W	450W
空载转速 No-load Speed	0-3000r/min	380-1300r/min	0-2800r/min
重量 Weight	15/16kgs	15/16kgs	13/14kgs
装箱数 Pcs Per Carton	10PCS	10PCS	10PCS
外箱尺寸 Carton Size	50x36.5x27.5cm	50x36.5x27.5cm	47x37x23cm

**ELECTRIC DRILL**  
手电钻



产品型号/货号	MT10RE ED-MT-10	MK450 ED-MT-10	MK450A ED-MT-10
钻孔直径 Max Drill Capacity	10mm(3/8")	10mm(3/8")	10mm(3/8")
额定电压 Rated Voltage	240/110V~	240/110V~	240/110V~
额定频率 Rated Frequency	50/60Hz	50/60Hz	50/60Hz
输出功率 Rated Input Power	450W	450W	450W
空载转速 No-load Speed	0-2600r/min	0-2800r/min	0-3500r/min
重量 Weight	15/16kgs	14/16kgs	13.2/14.2kgs
装箱数 Pcs Per Carton	10PCS	10PCS	10PCS
外箱尺寸 Carton Size	47x36x22.5cm	40x30.5x27cm	40x30.5x27cm

**IMPACT DRILL**  
冲击钻



产品型号/货号	MT1630 ID-MT-13	MT13RE ID-MT-13	DW13 ID-MT-13
钻孔直径 Max Drill Capacity	13mm	13mm	13mm
额定电压 Rated Voltage	240/110V~	240/110V~	240/110V~
额定频率 Rated Frequency	50/60Hz	50/60Hz	50/60Hz
输出功率 Rated Input Power	710W	700W	710W
空载转速 No-load Speed	0-3200r/min	0-3200r/min	0-3200r/min
重量 Weight	23/24kgs	18/19kgs	24/25kgs
装箱数 Pcs Per Carton	10PCS	10PCS	10PCS
外箱尺寸 Carton Size	57.5x39x31cm	60x39x24cm	55.5x38.5x28.5cm

**IMPACT DRILL**  
冲击钻



产品型号/货号	DW500 ID-MT-13	LP13 ID-MT-13
钻孔直径 Max Drill Capacity	13mm	13mm
额定电压 Rated Voltage	240/110V~	240/110V~
额定频率 Rated Frequency	50/60Hz	50/60Hz
输出功率 Rated Input Power	710W	710W
空载转速 No-load Speed	0-3200r/min	0-3200r/min
重量 Weight	22.5/23.5kgs	15/16kgs
装箱数 Pcs Per Carton	8PCS	5PCS
外箱尺寸 Carton Size	65.5x39x30cm	58.5x31x35cm

**MT** 交流系列 **ANGLE GRINDER** 角磨机



**ANGLE GRINDER**  
角磨机



散热通风口  
Cooling vent

主轴锁  
Spindle lock

可更换锯片磨片  
Replaceable saw blade grinding blade



锁定按钮  
Lock button



人体工学机身  
Ergonomic body



辅助手柄  
Auxiliary handle



散热孔  
Heat dissipation hole

碳刷指示灯  
Carbon brush indicator light



方便副手柄  
Deputy handle

安全防护罩  
Safety Shield

强大电机 耐高温漆包线 抗过载 防烧机  
Strong motor, high temperature resistant enameled wire, anti-overload, anti-burning machine

强劲散热 持久工作不烫手  
Strong cooling, long-term work is not hot

纤细握手设计 更好贴合手部 工作更顺手  
Slender handshake design, better fit hand, work more smoothly

便捷主轴锁设定 快速高效拆卸、更换磨片  
Convenient spindle lock setting, quick and efficient disassembly, replacement grinding plate

大模数齿轮 品质高 扭矩大 输出更稳定  
Large modulus gear, high quality, high torque, more stable output

外置碳刷设计 维修、更换方便快捷  
External carbon brush design, easy to repair and replace

**ANGLE GRINDER**  
角磨机



产品型号/货号	MT 4030B AG-MT-100/115/125	MT 4030D AG-MT-100/115/125
砂轮片直径 Disc Diameter	100/115/125mm (4"/4.5"/5")	100/115/125mm (4"/4.5"/5")
额定电压 Rated Voltage	240/110V~	240/110V~
额定频率 Rated Frequency	50/60Hz	50/60Hz
最大输出功率 Rated Input Power	710W	710W
空载转速 No-load Speed	10000r/min	10000r/min
重量 Weight	20/21kgs	20/21kgs
装箱数 Pcs Per Carton	10PCS	10PCS
外箱尺寸 Carton Size	47x33.5x26cm	47x33.5x26cm

**ANGLE GRINDER**  
角磨机

机身小巧 握持舒适 长时间使用不疲劳  
Small body, comfortable grip, long time use not tired

强劲散热 持久工作不烫手  
Strong cooling, long-term work is not hot

高品质置顶开关 方便操作  
High quality overhead switch for easy operation



产品型号/货号	MT 9149 AG-MT-100/115/125
砂轮片直径 Disc Diameter	100/115/125mm (4"/4.5"/5")
额定电压 Rated Voltage	240/110V~
额定频率 Rated Frequency	50/60Hz
最大输出功率 Rated Input Power	650W
空载转速 No-load Speed	10000r/min
重量 Weight	21.5/22.5kgs
装箱数 Pcs Per Carton	10PCS
外箱尺寸 Carton Size	62x30.5x25cm

调速开关

外置碳刷

**ANGLE GRINDER**  
角磨机



产品型号/货号	MT 9115 AG-MT-100/115/125	MT 9116 AG-MT-100/115/125
砂轮片直径 Disc Diameter	100/115/125mm (4"/4.5"/5")	100/115/125mm (4"/4.5"/5")
额定电压 Rated Voltage	240/110V~	240/110V~
额定频率 Rated Frequency	50/60Hz	50/60Hz
最大输出功率 Rated Input Power	800W	900W
空载转速 No-load Speed	10000r/min	10000r/min
重量 Weight	22.5/23.5kgs	23/24kgs
装箱数 Pcs Per Carton	10PCS	10PCS
外箱尺寸 Carton Size	62x30.5x25cm	62x30.5x25cm

**ANGLE GRINDER**  
角磨机



产品型号/货号	MT 9125 AG-MT-100/115/125	MT 9150 AG-MT-150
砂轮片直径 Disc Diameter	100/115/125mm (4"/4.5"/5")	150mm (6")
额定电压 Rated Voltage	240/110V~	240/110V~
额定频率 Rated Frequency	50/60Hz	50/60Hz
最大输出功率 Rated Input Power	710W	1100W
空载转速 No-load Speed	11000r/min	8500r/min
重量 Weight	21.5/22.5kgs	kgs
装箱数 Pcs Per Carton	10PCS	PCS
外箱尺寸 Carton Size	57x37x19cm	cm

**ANGLE GRINDER**  
角磨机



产品型号/货号	MT 954 AG-MT-100/115/125	MT 6-100 AG-MT-100/115/125
砂轮片直径 Disc Diameter	100/115/125mm	100/115/125mm
额定电压 Rated Voltage	240/110V~	240/110V~
额定频率 Rated Frequency	50/60Hz	50/60Hz
最大输出功率 Rated Input Power	680W	700W
空载转速 No-load Speed	10000r/min	11000r/min
重量 Weight	18.5/19.5kgs	20/21kgs
装箱数 Pcs Per Carton	10PCS	10PCS
外箱尺寸 Carton Size	62x29x19.5cm	62x30.5x25cm

**ANGLE GRINDER**  
角磨机



产品型号/货号	MT 9147 AG-MT-100/115/125	MT 9147VS AG-MT-100/115/125
砂轮片直径 Disc Diameter	100/115/125mm	100/115/125mm
额定电压 Rated Voltage	240/110V~	240/110V~
额定频率 Rated Frequency	50/60Hz	50/60Hz
最大输出功率 Rated Input Power	680W	680W
空载转速 No-load Speed	10000r/min	10000r/min
重量 Weight	20.5/21.5kgs	20.5/21.5kgs
装箱数 Pcs Per Carton	10PCS	10PCS
外箱尺寸 Carton Size	62x30.5x25cm	62x30.5x25cm

**ANGLE GRINDER**  
角磨机



产品型号/货号	MT 9147A AG-MT-100/115/125	MT 9148 AG-MT-100/115/125
砂轮片直径 Disc Diameter	100/115/125mm	100/115/125mm
额定电压 Rated Voltage	240/110V~	240/110V~
额定频率 Rated Frequency	50/60Hz	50/60Hz
最大输出功率 Rated Input Power	900W	700W
空载转速 No-load Speed	10000r/min	10000r/min
重量 Weight	20/21kgs	20/21kgs
装箱数 Pcs Per Carton	10PCS	10PCS
外箱尺寸 Carton Size	62x30.5x25cm	62x30.5x25cm

**ANGLE GRINDER**  
角磨机



产品型号/货号	MT 7180/7230 AG-MT-180/230	MT 7180A/7230A AG-MT-180/230
砂轮片直径 Disc Diameter	180/230mm	180/230mm
额定电压 Rated Voltage	240/110V~	240/110V~
额定频率 Rated Frequency	50/60Hz	50/60Hz
最大输出功率 Rated Input Power	2000W	2600W
空载转速 No-load Speed	6000r/min	6000r/min
重量 Weight	22.2/23.2kgs	22.2/23.2kgs
装箱数 Pcs Per Carton	4PCS	4PCS
外箱尺寸 Carton Size	57x38.5x24.5cm	57x38.5x24.5cm

**WOOD TRIMMER**  
修边机



**WOOD TRIMMER**  
修边机



产品型号/货号	MT3703 WT-MT-6.35
夹头直径 Disc Diameter	6.35mm
额定电压 Rated Voltage	220-240V~
额定频率 Rated Frequency	50/60Hz
最大输出功率 Rated Input Power	500W
空载转速 No-load Speed	32000r/min
重量 Weight	21.58/22.58kgs
装箱数 Pcs Per Carton	10PCS
外箱尺寸 Carton Size	76x28.5x31cm

产品型号/货号	MT3709 WT-MT-6
夹头直径 Disc Diameter	6mm
额定电压 Rated Voltage	220-240V~
额定频率 Rated Frequency	50/60Hz
最大输出功率 Rated Input Power	530W
空载转速 No-load Speed	30000r/min
重量 Weight	21.58/22.58kgs
装箱数 Pcs Per Carton	10PCS
外箱尺寸 Carton Size	76x28.5x31cm

**ELECTRIC ROUTER**  
雕刻机



**ELECTRIC ROUTER**  
雕刻机

Aluminum body



产品型号/货号	MT3612 ER-MT-12
刀头直径 Chuck Diameter	12mm
额定电压 Rated Voltage	240/110V~
额定频率 Rated Frequency	50/60Hz
最大输出功率 Rated Input Power	1600W
空载转速 No-load Speed	23000r/min
重量 Weight	23/24kgs
装箱数 Pcs Per Carton	4PCS
外箱尺寸 Carton Size	57x37.5x25.5cm

产品型号/货号	MT3612 ER-MT-12
刀头直径 Chuck Diameter	12mm
额定电压 Rated Voltage	240/110V~
额定频率 Rated Frequency	50/60Hz
最大输出功率 Rated Input Power	1600W
空载转速 No-load Speed	23000r/min
重量 Weight	23/24kgs
装箱数 Pcs Per Carton	4PCS
外箱尺寸 Carton Size	57x37.5x25.5cm

**WOOD TRIMMER**  
修边机



**JIG SAW**  
曲线锯



产品型号/货号	MT370 WT-MT-6
夹头直径 Disc Diameter	6mm
额定电压 Rated Voltage	220-240V~
额定频率 Rated Frequency	50/60Hz
最大输出功率 Rated Input Power	530W
空载转速 No-load Speed	35000r/min
重量 Weight	21.58/22.58kgs
装箱数 Pcs Per Carton	10PCS
外箱尺寸 Carton Size	76x28.5x31cm

产品型号/货号	MT2360 JS-MT-65
切割深度 Cutting Capacity	钢材60mm 木材65mm
额定电压 Rated Voltage	240/110V~
额定频率 Rated Frequency	50/60Hz
最大输出功率 Rated Input Power	1050W
空载转速 No-load Speed	500W
电池容量 Battery Type	0-3100r/min
重量 Weight	15/16kgs
装箱数 Pcs Per Carton	5PCS
外箱尺寸 Carton Size	54x37x31cm

**ELECTRIC ROUTER**  
雕刻机



**ELECTRIC ROUTER**  
雕刻机



产品型号/货号	MT3601 ER-MT-12
刀头直径 Chuck Diameter	12mm
额定电压 Rated Voltage	240/110V~
额定频率 Rated Frequency	50/60Hz
最大输出功率 Rated Input Power	1850W
空载转速 No-load Speed	23000r/min
重量 Weight	15.5/16.5kgs
装箱数 Pcs Per Carton	3PCS
外箱尺寸 Carton Size	64.5x36x22.5cm

产品型号/货号	MT3212 ER-MT-12
刀头直径 Chuck Diameter	12mm
额定电压 Rated Voltage	240/110V~
额定频率 Rated Frequency	50/60Hz
最大输出功率 Rated Input Power	1300W
空载转速 No-load Speed	18000r/min
重量 Weight	18/19kgs
装箱数 Pcs Per Carton	3PCS
外箱尺寸 Carton Size	58x31.5x26.5cm

**MARBLE CUTTER**  
云石机



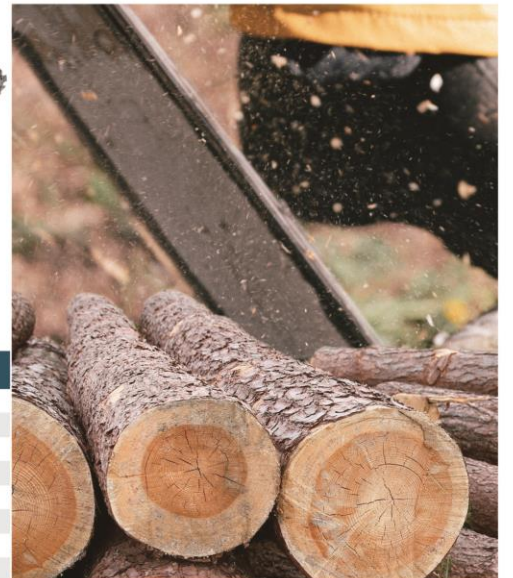
**CIRCULAR SAW**  
电圆锯



产品型号/货号	MT4010 MC-MT-110
锯片直径 Blade Diameter	110mm
额定电压 Rated Voltage	240/110V~
额定频率 Rated Frequency	50/60Hz
最大输出功率 Rated Input Power	1200W
空载转速 No-load Speed	13000r/min
重量 Weight	24/25kgs
装箱数 Pcs Per Carton	8PCS
外箱尺寸 Carton Size	48x44x37cm

产品型号/货号	MT5800 CS-MT-185
锯片直径 Blade Diameter	185mm
额定电压 Rated Voltage	240/110V~
额定频率 Rated Frequency	50/60Hz
最大输出功率 Rated Input Power	1050W
空载转速 No-load Speed	4700r/min
重量 Weight	16/17kgs
装箱数 Pcs Per Carton	8PCS
外箱尺寸 Carton Size	51x32x39cm

**ELECTRIC CHAIN SAW**  
电链锯



产品型号/货号	MT8028
切割直径 Cutting Capacity	12"
额定电压 Rated Voltage	240/110V~
额定频率 Rated Frequency	50/60Hz
最大输出功率 Rated Input Power	450W
空载转速 No-load Speed	0-4500r/min
重量 Weight	18/19kgs
装箱数 Pcs Per Carton	6PCS
外箱尺寸 Carton Size	55.5x35.5x32cm

**CIRCULAR SAW**  
电圆锯



**CIRCULAR SAW**  
电圆锯



产品型号/货号	MT5070 CS-MT-185
锯片直径 Blade Diameter	185mm
额定电压 Rated Voltage	240/110V~
额定频率 Rated Frequency	50/60Hz
最大输出功率 Rated Input Power	1380W
空载转速 No-load Speed	5000r/min
重量 Weight	16/17kgs
装箱数 Pcs Per Carton	4PCS
外箱尺寸 Carton Size	51x32x39cm

产品型号/货号	MT5090 CS-MT-235
锯片直径 Blade Diameter	235mm
额定电压 Rated Voltage	240/110V~
额定频率 Rated Frequency	50/60Hz
最大输出功率 Rated Input Power	2380W
空载转速 No-load Speed	4500r/min
重量 Weight	14.2/15.2kgs
装箱数 Pcs Per Carton	2PCS
外箱尺寸 Carton Size	58x40x22.5cm

**ELECTRIC POLISHER**  
抛光机



**ELECTRIC POLISHER**  
抛光机



产品型号/货号	MT0500 EP-MT-100/125
抛光轮直径 Disc Diameter	100/125mm
额定电压 Rated Voltage	240/110V~
额定频率 Rated Frequency	50/60Hz
最大输出功率 Rated Input Power	450W
空载转速 No-load Speed	0-4500r/min
重量 Weight	16.5/17.5kgs
装箱数 Pcs Per Carton	10PCS
外箱尺寸 Carton Size	43x42.5x25.5cm

产品型号/货号	MT0510 EP-MT-100/125
抛光轮直径 Disc Diameter	100/125mm
额定电压 Rated Voltage	240/110V~
额定频率 Rated Frequency	50/60Hz
最大输出功率 Rated Input Power	450W
空载转速 No-load Speed	0-4500r/min
重量 Weight	15/16kgs
装箱数 Pcs Per Carton	10PCS
外箱尺寸 Carton Size	43x42.5x25.5cm

**ELECTRIC BLOWER**  
吹风机



产品型号/货号	MT 4014 EB-MT-2.3	MT 4013 EB-MT-2.3
空气容量 The Air Volume	2.3m³/min	2.3m³/min
额定电压 Rated Voltage	240/220V~	240/220V~
额定频率 Rated Frequency	50/60Hz	50/60Hz
输出功率 Rated Input Power	350W	350W
空载转速 No-load Speed	14500r/min	14500r/min
重量 Weight	12/13kgs	11/12kgs
装箱数 Pcs Per Carton	6PCS	6PCS
外箱尺寸 Carton Size	62x29x38.5cm	62x29x38.5cm

**CUT-OFF MACHINE**  
型材切割机



**MITER SAW**  
锯铝机



产品型号/货号	MT2142 CM-MT-355	产品型号/货号	MT 255 MS-MT-255
锯片直径 Blade Diameter	355mm	锯片直径 Blade Diameter	255mm
额定电压 Rated Voltage	240/220V~	额定电压 Rated Voltage	240/220V~
额定频率 Rated Frequency	50/60Hz	额定频率 Rated Frequency	50/60Hz
最大输出功率 Rated Input Power	2250W	最大输出功率 Rated Input Power	2200W
空载转速 No-load Speed	3800r/min	空载转速 No-load Speed	6000r/min
重量 Weight	9.8/10.8kgs	重量 Weight	9.1/10.1kgs
装箱数 Pcs Per Carton	1PCS	装箱数 Pcs Per Carton	1PCS
外箱尺寸 Carton Size	52.8x29x38cm	外箱尺寸 Carton Size	51.5x41.3x42.2cm

**ROTARY HAMMER**  
电锤

New!



产品型号/货号	RH 6015 EH-MT-20	MT 6036 EH-MT-32
最大钻孔能力 Max Drill Capacity	20mm	32mm
额定电压 Rated Voltage	240/110V~	240/110V~
额定频率 Rated Frequency	50/60Hz	50/60Hz
最大输出功率 Rated Input Power	450W	710W
空载转速 No-load Speed	0-1680r/min	0-3200r/min
重量 Weight	kgs	15.5/16.5kgs
装箱数 Pcs Per Carton	PCS	3PCS
外箱尺寸 Carton Size	cm	58.5x41x31cm

**ELECTRIC PLANER**  
电刨



**ELECTRIC PLANER**  
电刨



产品型号/货号	MT 1900A EP-MT-82	产品型号/货号	MT 1900B EP-MT-82
刨削宽度 Planing Width	82mm	刨削宽度 Planing Width	82mm
额定电压 Rated Voltage	240/110V~	额定电压 Rated Voltage	240/110V~
额定频率 Rated Frequency	50/60Hz	额定频率 Rated Frequency	50/60Hz
最大输出功率 Rated Input Power	500W	最大输出功率 Rated Input Power	600W
空载转速 No-load Speed	16000r/min	空载转速 No-load Speed	16000r/min
重量 Weight	16/18kgs	重量 Weight	17/19kgs
装箱数 Pcs Per Carton	6PCS	装箱数 Pcs Per Carton	6PCS
外箱尺寸 Carton Size	52x31x38.5cm	外箱尺寸 Carton Size	54.5x33x38cm

28PCS



**ELECTRIC DRILL SETS**  
电钻套装

产品型号/货号	MK450A SETS
套筒 (5-13)	9 pcs socket set (5-13)
接珠	1 pc connection Rod
一体连接杆	1pc extension bar
木工钻 (4.5,6)	3pcs Wood drill bit (4.5,6)
麻花钻 (4.5,6)	3pcs Twist drill bit (4.5,6)
6个批头	6 pcs screwdriver bits
3, 4,5膨胀管, 螺丝组合	3pcs exoansion tube (3, 4,5) screw set
塑盒一只	1 pc BMC box
电钻1个	1 pc electric drill
重量Weight	19.5/18.5KG
装箱数PCS per carton	8PCS
外箱尺寸Carton size	59x38x27CM

**IMPACT DRILL SETS** 冲击钻套装

产品型号/货号	MT13RE SETS
迷你锯	1pc MINI saw
电胶布	1pc electric tape
5-13 (9+件套筒组合)	9pcs socket set(5-13)
水平尺一把	1pc level ruler
猫眼十字螺丝刀	1pc "+"type screwdriver
猫眼一字螺丝刀	1pc "-"type screwdriver
批头可转换螺丝刀	1pc bit screwdriver with be convertible
包胶美工刀	1pc utility knife
50长10支单头批组合	10pcs 50mm bit with one head
5片装刀片组合	5pcs blade sets
批头一支	1pc bit
接珠	1 pc connection Rod
一体连接杆	1pc extension bar
3, 4,5膨胀管, 螺丝组合	3pcs exoansion tube (3, 4,5) screw set
3米卷尺	1pc 3M tape
镀钛麻花钻4,5,6	3pcs Ti-coated drill bit 4,5,6
三尖木工钻头4,5,8	3pcs wood drill bit 4,5,8
6寸双色套柄钢丝钳	1pc 6 inch cuttiniig pliers
6寸双色套柄尖嘴钳	1pc 6 inch nipper pliers
羊角锤	1pc long handle hammer
8寸双色套柄活扳手	1pc 8" adjustable wrench
手柄一个	1pc Handle
导尺1支	1pc Guide ruler
塑盒一只	1 pc BMC box
冲击钻1个	1 pc impact drill machine
重量Weight	24/23KG
装箱数PCS per carton	5PCS
外箱尺寸Carton size	54x43x35.5CM

38PCS



75PCS



**IMPACT DRILL SETS**  
冲击钻套装

产品型号/货号	DW500 SETS
圆形磨头	Round grinding head
柱形磨磨头	Cylindrical grinding head
椭圆形磨头	Oval grinding head
锥形磨头	Cone grinding head
铅笔一支	1pc pencil
木工钻2支	2pcs Wood drill bit
麻花钻4支	4pcs Twist drill bit
建工钻2支	2pcs Concrete drill bit
4个批头	4 pcs screwdriver bits
接珠	1 pc connection Rod
一体连接杆	1pc extension bar
套筒 8只	8 pcs socket set
钥匙1个	1pc key
3米透明卷尺	1pc 3M tape
手柄一个	1pc Handle
导尺1支	1pc Guide ruler
冲击钻1台	1pc impact drill machine
重量Weight	24.5/23.5KG
装箱数PCS per carton	8PCS
外箱尺寸Carton size	65.5x39x30CM

**IMPACT DRILL SETS** 冲击钻套装

产品型号/货号	MT1630 SETS
3米透明卷尺	1pc 3M tape
手柄一个	1pc Handle
40件套批头组合(25mm)	40pcs bit sets (25mm)
六角风批头4支 (8,10,12,13)	4pcs hexagonal bits
一体连接杆	1pc extension bar
木工倒三角器 12	1pc Inverted triangle for wood(12)
50mm 批头组合	40pcs bit sets (50mm)
110mm 双批头	110mm Double bit
木工钻(4.5,6,8,10)	5pcs Wood drill bit (4.5,6,8,10)
麻花钻7根 (3/3.5/4/4.5/5.5/6/6.5)	7pcs Twist drill bit (3/3.5/4/4.5/5.5/6/6.5)
建工钻5根(4.5,6,7,8)	5pcs Concrete drill bit (4.5,6,7,8)
扁钻 (16,20)	2pcs flat drill (16,20)
导尺1支	1pc Guide ruler
塑盒一只	1 pc BMC box
冲击钻1个	1 pc impact drill machine
重量Weight	18/17KG
装箱数PCS per carton	4PCS
外箱尺寸Carton size	55x43.5x32CM

29PCS

