

Zhi'an box house

Directory

- 1 ----- Factory Profile
- 2 ----- Partners
- 3 ----- Business processes
- 4 ----- Introduction to container houses
- 5 ----- Product Display
- 6 ----- Renderings showcased
- 7 ----- Project examples

Factory Profile



Zhi'an Box Housing Technology Co., Ltd. is a company focusing on the customized design and manufacture of container houses, and is committed to providing high-quality, environmentally friendly and economical residential solutions to customers around the world. Our company's vision is to become a global leader in container housing, providing people with a safe, comfortable and sustainable living environment. Our company was founded at the end of the 20th century, when container houses were still an emerging field. After years of development, we continue to expand our business scope, improve production efficiency, optimize product design, and gradually become a leader in the field of container houses. At present, our business spreads all over the world, with multiple production bases and sales networks, providing customized container house solutions for people in different regions. Our product line includes container houses of various sizes and designs, including studios, dormitories, offices, shops, restaurants, entertainment facilities, and more. We provide a one-stop service from design, manufacturing to installation, ensuring that our customers can realize their living needs quickly and efficiently. In addition, we also provide customized services, personalized design according to customer needs and site conditions to meet the different needs of different customers.



► Product features

Office



Restaurant



Supermarket



Dormitory



Toilet



Reception Room



Laundry



Kitchen



Party Construction Office



Conference Room



► Fields of application



Plant building



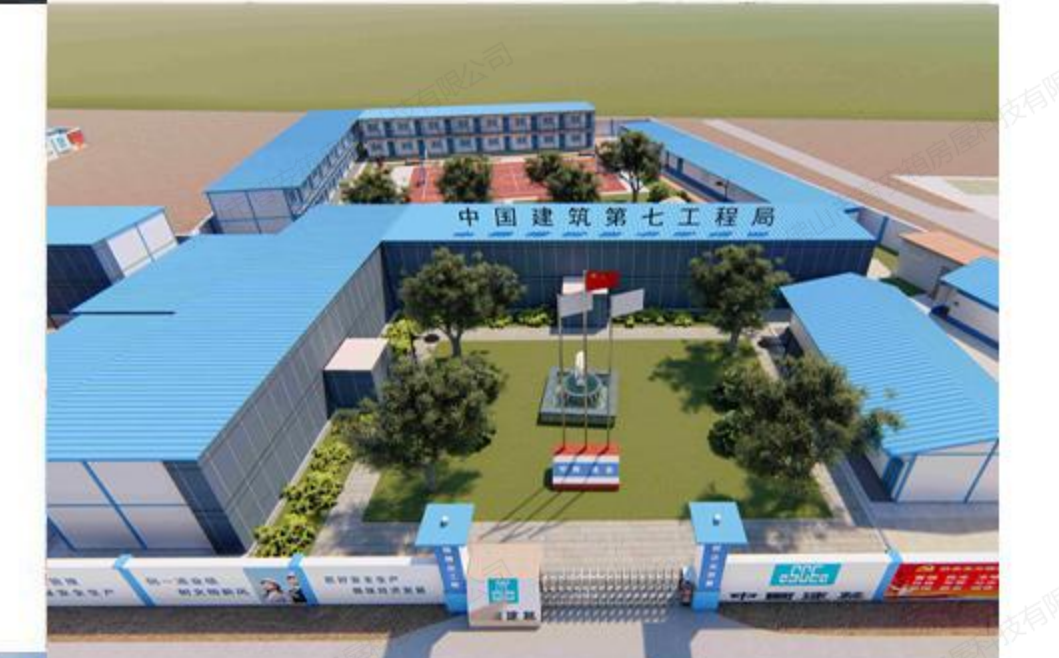
Disaster relief resettlement room



Temporary municipal housing



Project camp



Military Camp



Public utilities room



Commercial housing





U-shaped project department



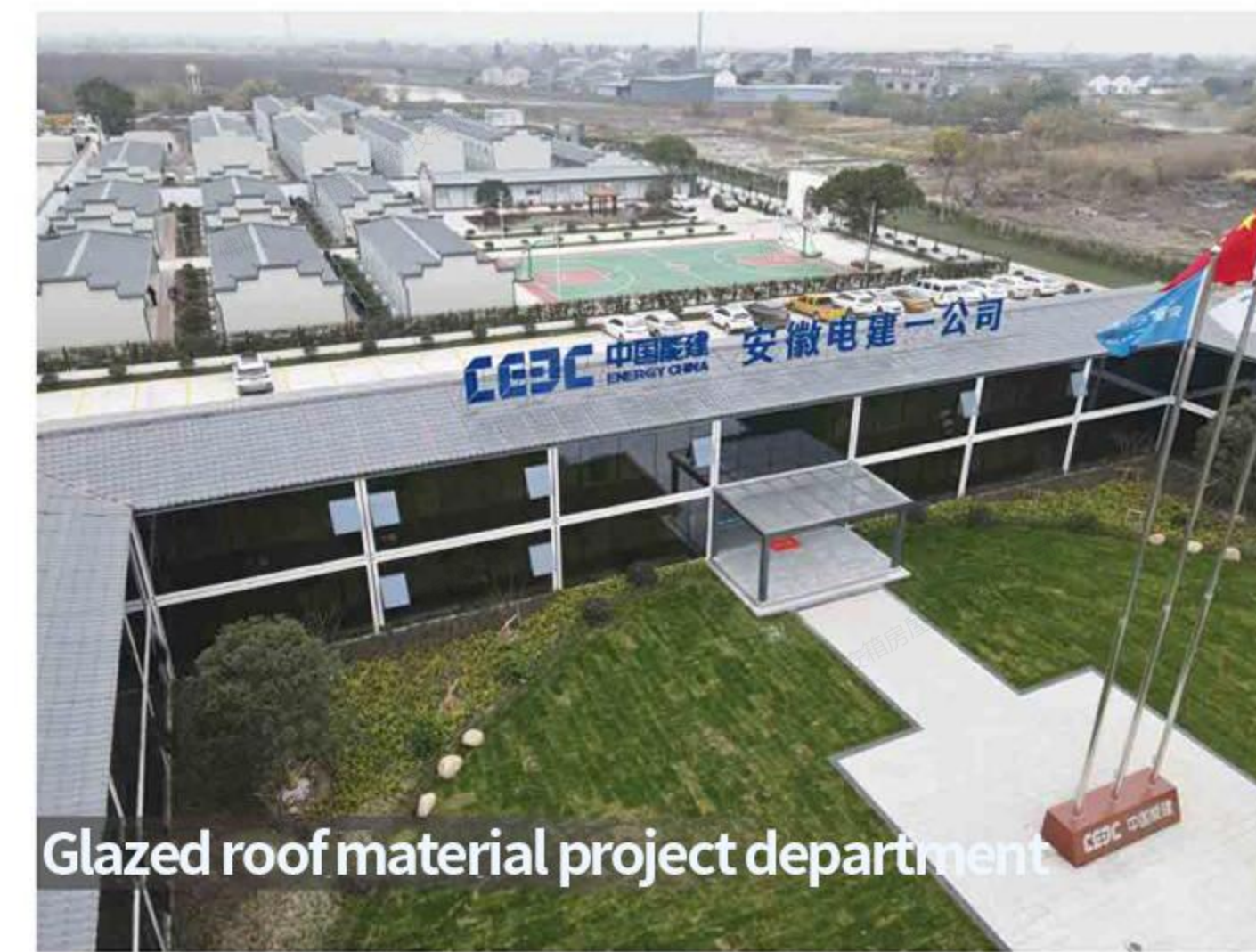
7-shaped project department



Courtyard Project Department



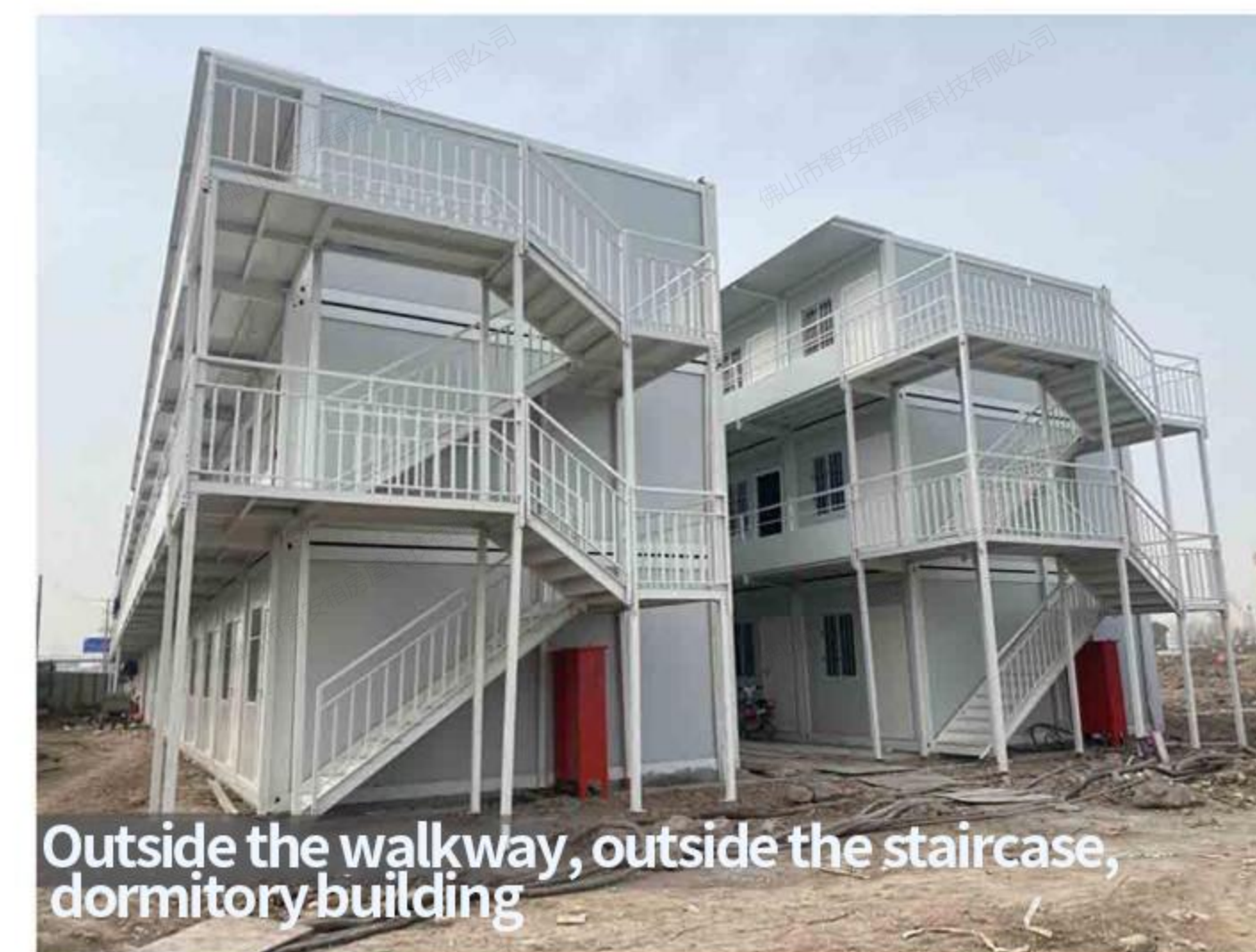
Slotted project department



Glazed roof material project department



Modeling combination box



Outside the walkway, outside the staircase, dormitory building



Ping' Ding



Three-storey project department



PRODUCT INTRODUCTION



DISASSEMBLED CONTAINER HOUSE

Container houses



Disassembled container house:
Galvanized steel and color steel sandwich panel are used as the main materials. It is assembled on site through bolts. The main materials are transported in bulk, and the length and width is flexible, so the transportation cost is reduced, and the combination mode is more flexible.



PRODUCT INTRODUCTION

T-TYPE PREFABRICATED HOUSE

T-House is a type of temporary buildings using the steelstructure as the fundamental system for the floor load bearing, anothe self strength of sandwich panels as the load transferring factorwhile connecting them by the efficient method.The design of T-House is modularized, which means theexternal and internal appearances are neater and more beautifulthe layouts are more flexible, the thermal and sound insulatingperformances are much better.





PRODUCT INTRODUCTION

K-type house: light steel structure is used as the framework, color steel sandwich panel as the enclosure material, is designed with standard module to form the layouts and the primary components are connected by bolts, which can be easily and quickly assembled and disassembled.

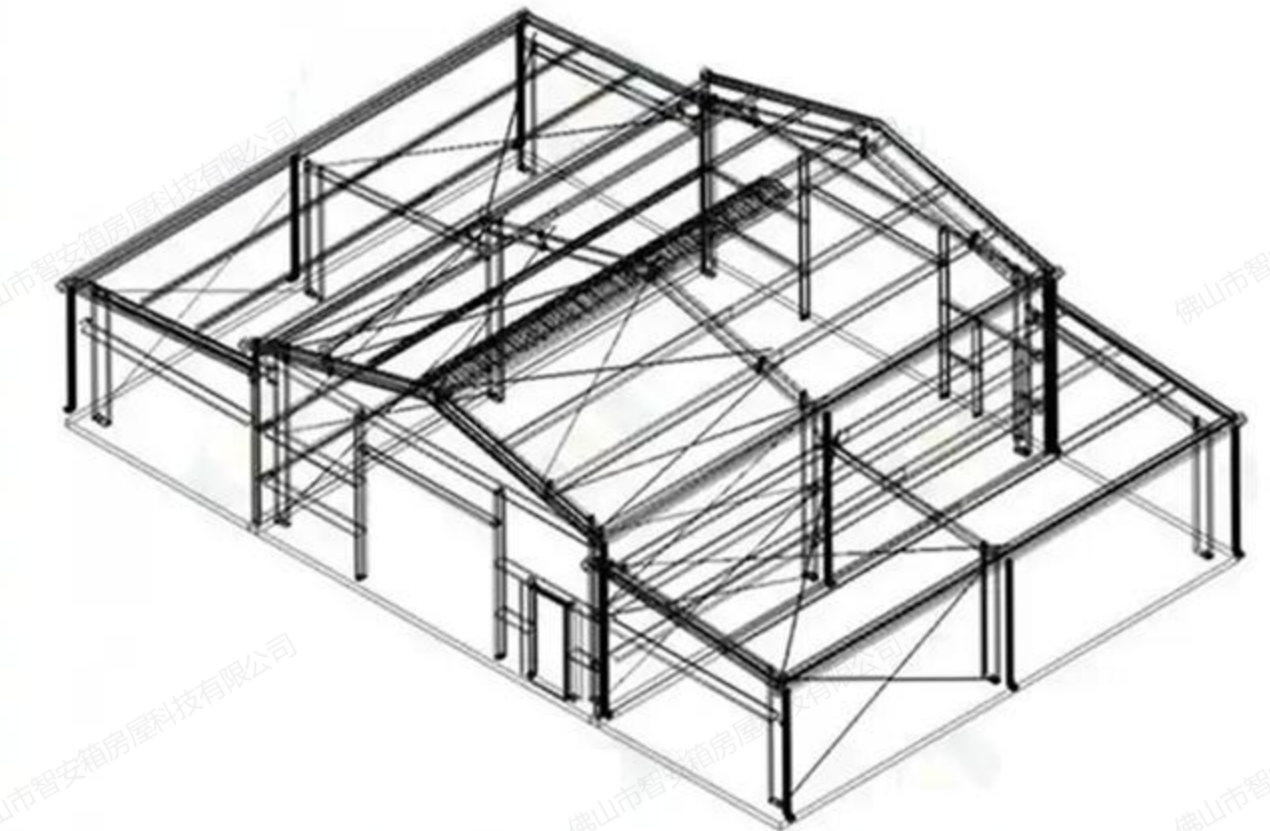
The design concept of K-House is universal, standardized and modular, which is advantageous to achieve the development of line products, industrialized manufacture, supply of complete set, fast assembling or disassembling and repetitive use. It can be widely used for construction site, government settlement housing, disaster relief, public events and etc.





PRODUCT INTRODUCTION

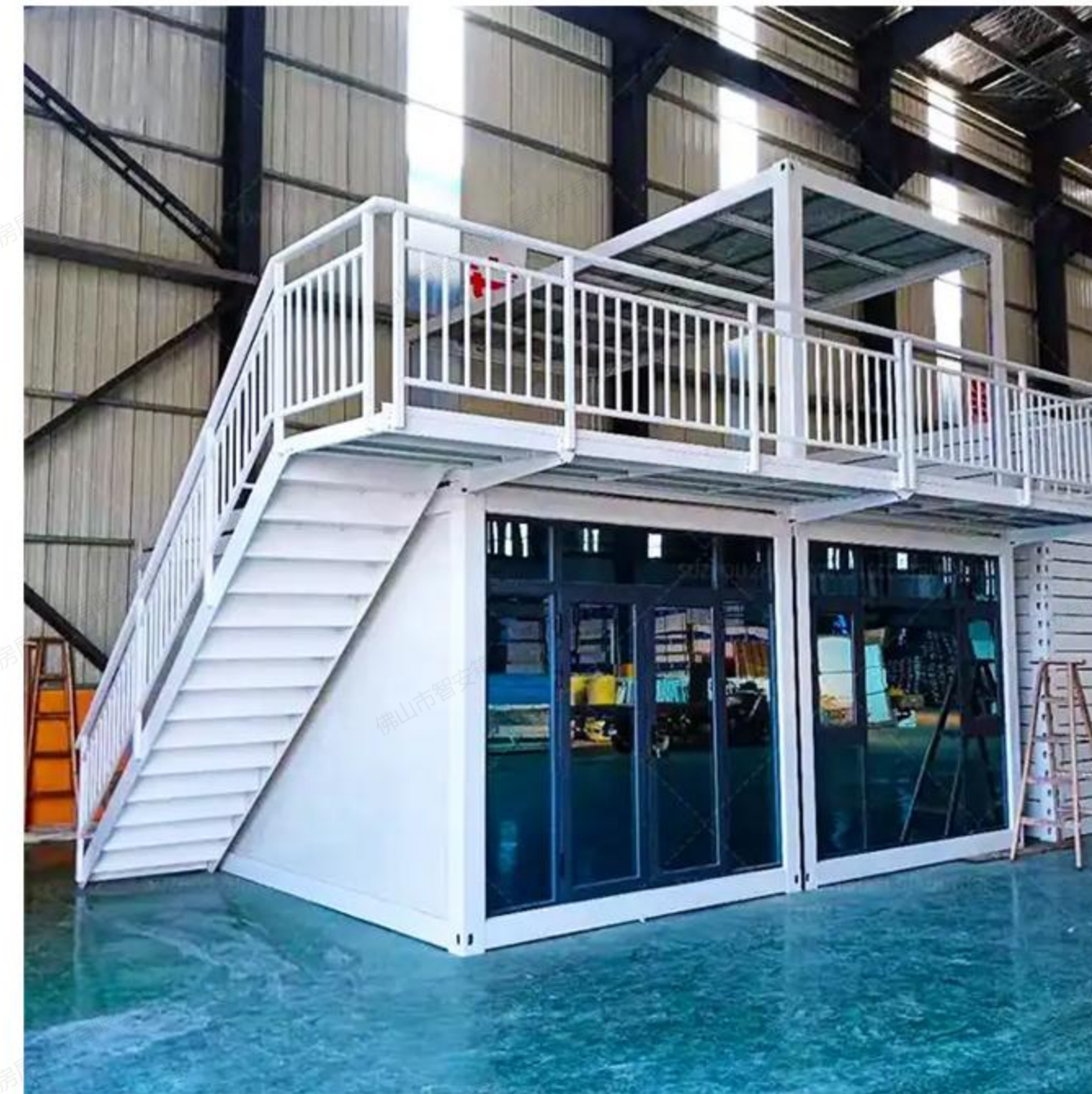
Portal steel structure is usually used for single storey industrial buildings with span of 9-36m (single span or multi span), column spacing of 6m, column height of 4.5-9m and use for small crane lifting capacity. The main structure is made of H-shaped steel, M-shaped steel and C-shaped steel, which are connected by bolts. It is safe and beautiful, material saving, economical and reasonable, and easy to install. It is widely used in various industrial plants, commercial buildings, modern logistics centers, etc.





Fast LCL

Quick LCL is also called fast LCL house, fast LCL is a strong and durable connection between the column and the top and bottom beam through fastening screws, all of which are composed of steel, so it has the ability to resist earthquake and deformation; It is easy to disassemble and assemble, superior performance, stable and firm, good shockproof performance, waterproof, fireproof and anti-corrosion, and light weight. The house is an integral structure, with a frame inside, and the wall is a color steel composite panel, which can be relocated as a whole, and the service life can reach more than 20 years, which is suitable for duty rooms, guard rooms, shops, etc.



ACCESSORY PRODUCTS



TOILET CONTAINER

ENTRANCE GUARD CONTAINER

CORRUGATED WALL CONTAINER

ENCLOSING WALL



GUARD CONTAINER



CUSTOMIZED PRODUCTS

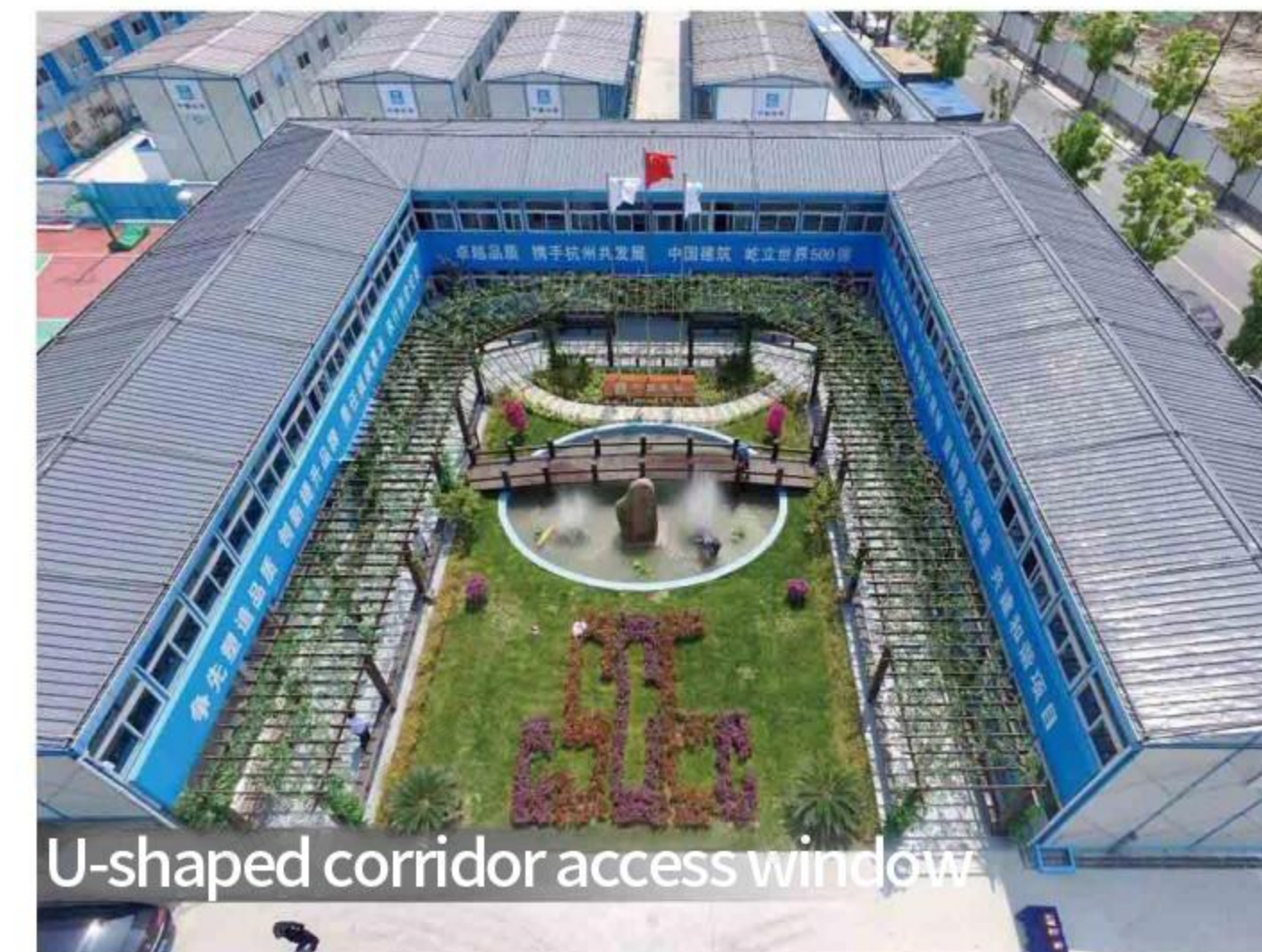


MOVABLE VILLA IN SCENIC AREA

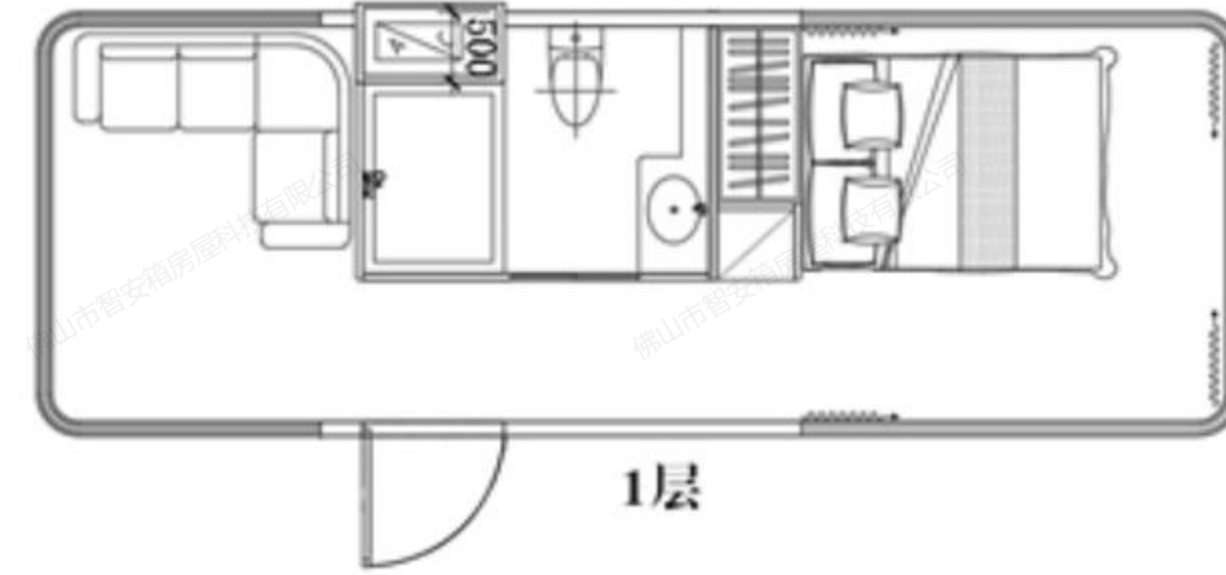


Introducing the activity box

Mobile house with light steel structure as the skeleton, with color steel sandwich board as the enclosure material, with standard modulus for empty combination, the main components are used. Bolted connection allows easy and quick assembly and disassembly. The design concept of universality, standardization and modularization of mobile house products, it has fully realized the advantages of serialized development, industrial production, matched supply, rapid disassembly and repeated use of temporary buildings. It can be widely used in government resettlement of construction camps, disaster relief and rescue, temporary housing for municipal and temporary housing for various commercial activities and other fields.



Fast LCL



Quick LCL container house is also called fast LCL house, fast LCL is a durable and durable connection between the column and the top and bottom beams through fastening screws, all of which are composed of steel, so it has the ability to resist earthquake and deformation; It is easy to disassemble and assemble, superior performance, stable and firm, good shockproof performance, waterproof, fireproof and anti-corrosion, and light weight. The house is an integral structure, with a frame inside, and the wall is a color steel composite panel, which can be relocated as a whole, and the service life can reach more than 20 years, which is suitable for duty rooms, guard rooms, shops, etc.

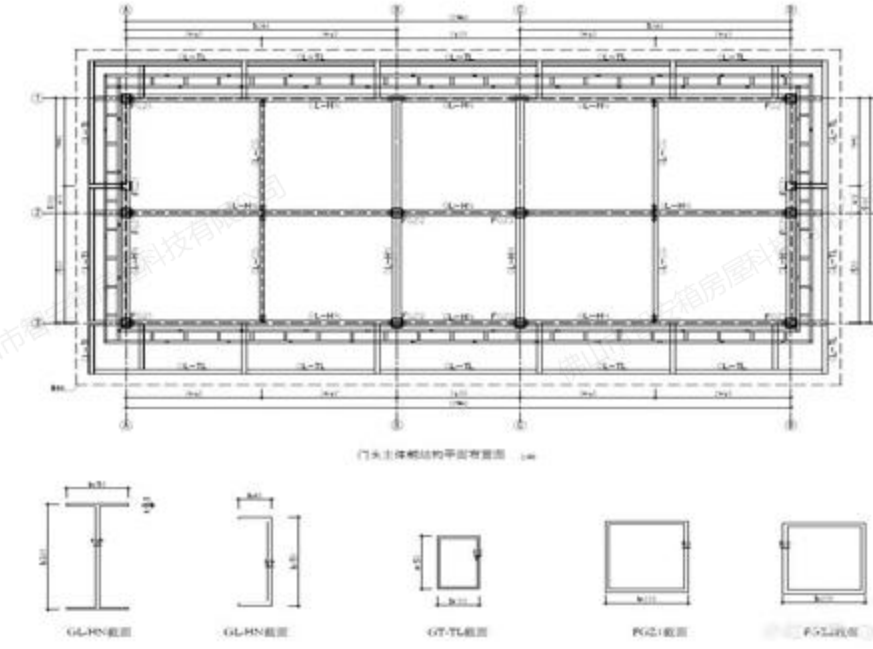
Product Information



Basic Information			
Type	Customized fast LCL GS-01		
Number of floors	customize		
layout	One bedroom, one living room and one bathroom		
Dimensions (L*W*H)	customize		
Standard configuration			
category	project	Standard configuration	Support customization
Exterior configuration	Main frame	Steel frame	
	Cabin shell	Sandwich panels	
	Platform floor	WPC	
	Platform guardrails	Custom guardrails	
	doors, Windows	customize doors, Windows	
Built-in configuration	roofing interior coverings	Bamboo and wood fiberboard	
	walls	831 color steel ceiling + decorative plate	
	Grande	Fiberglass cement board + locking floor	
	Bathroom flooring	Aluminum alloy glass door	
	Bathroom flooring	Bathrooms have marble/tile floors	
Basic configuration	Room glass	Insulating glass	
	toilet	Ceramic toilet	
	Showerhead	Refined copper hot and cold nozzles	
	Tabletop	Bathroom photo counter on plate	
	air conditioning	Inverter air conditioning and heating	
	water heater	60L storage water heater	
	tap	Tall faucets	
Interior lights	Interior lights		



Flat-roofed light steel house



The cost of light steel housing is low, and compared with traditional buildings, the cost can be saved by more than half, and the scope of application is simple, and the construction process is simple; Strong environmental protection is not easy to produce toxic substances: not only light texture, easy to handle, but also good safety and fire lines, earthquake resistance, good structural performance; It is more environmentally friendly, because the steel can be intermittently collected: the building weight is light, and the foundation cost is low

Product Information



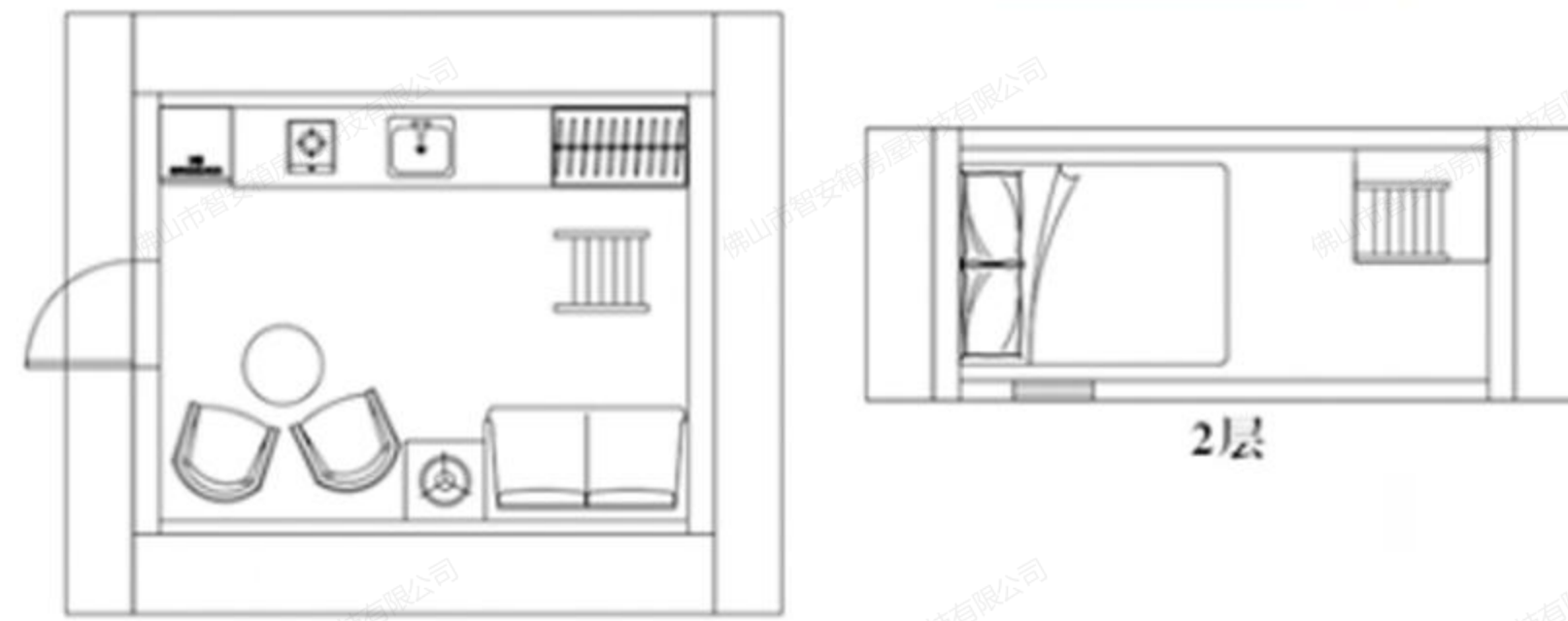
Interior decoration



Basic Information			
Type	Flat-roofed light steel house GS-01		
Number of floors	customize		
layout	two bedroom, one living room and one bathroom		
Dimensions (L*W*H)	customize		
Standard configuration			
category	project	Standard configuration	Support customization
Exterior configuration	Main frame	Pipe frame structure	
	Cabin shell	Rock wool board	
	Platform floor	Outdoor waterproof wooden flooring	
	Platform guardrails	Custom guardrails	
	doors, Windows	Aluminum alloy glass door/windows	
Built-in configuration	roofing interior coverings	Bamboo and wood fiberboard	
	Partition wall	Calcium carbonate plates+Bamboo and wood fiberboard	
	Grande	Cement fiber + tile/SPC lock floor	
	Bathroom doors	Aluminum alloy glass door	
	Bathroom flooring	Bathrooms have marble/tile floors	
	Room glass	Coated glass	
Basic configuration	toilet	Ceramic toilet	
	Showerhead	Refined copper hot and cold nozzles	
	Tabletop	Bathroom photo counter on plate	
	air conditioning	Inverter air conditioning and heating	
	water heater	60L storage water heater	
	tap	Tall faucets	
	Interior lights	Interior lights	



A-line light steel house



Product Information



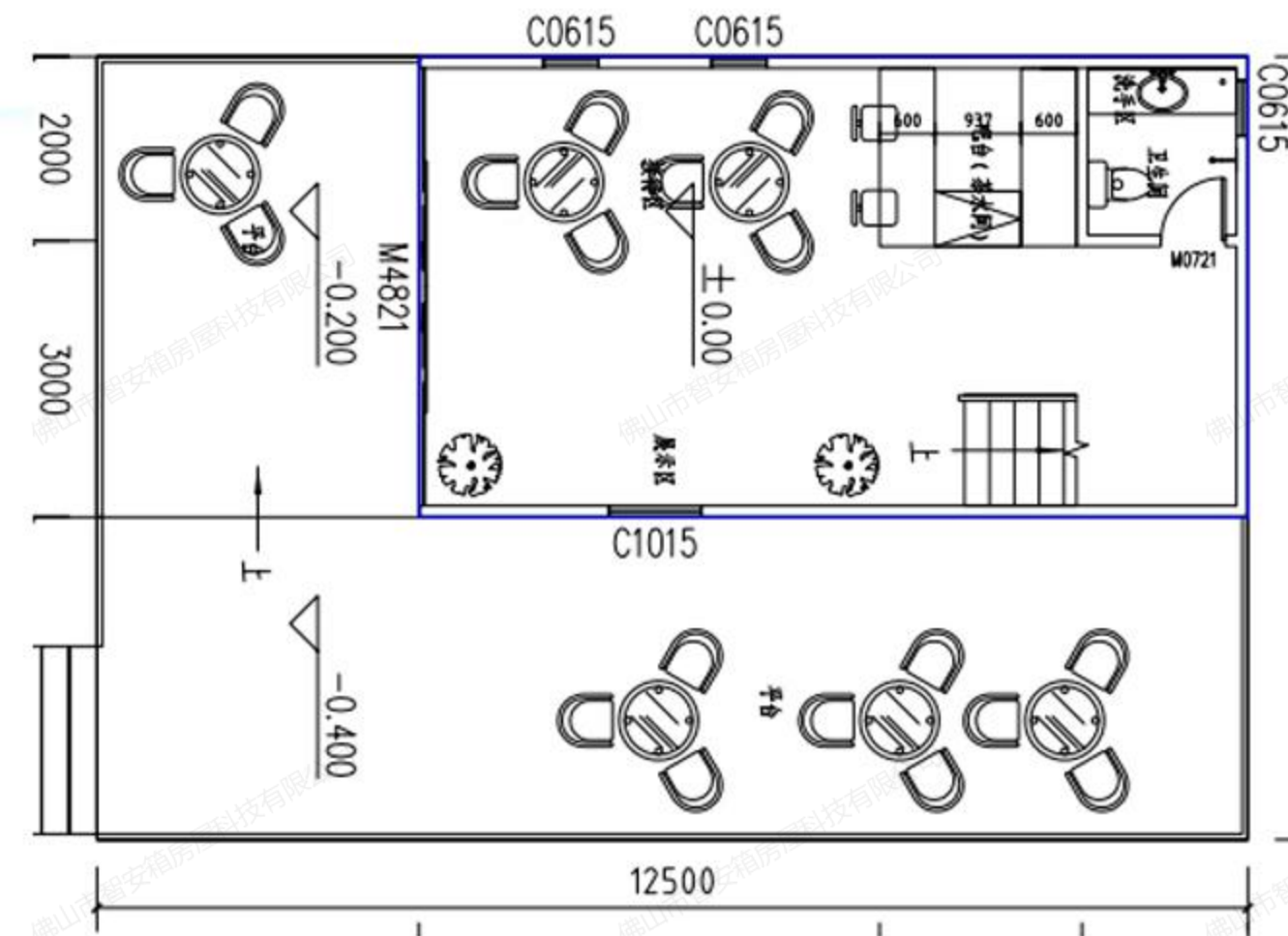
Interior decoration



Basic Information			
Type	A-line light steel house GS-01		
Number of floors	2 floors		
layout	two bedroom, one living room and one bathroom		
Dimensions (L*W*H)	customize		
Standard configuration			
category	project	Standard configuration	Support customization
Exterior configuration	Main frame	Light steel structure	
	Cabin shell	Waterproof layer + OSB board + aluminum-magnesium fireproof board + breaking paper + glass wool	
	Platform floor	Outdoor waterproof wooden flooring	
	doors	Aluminum alloy glass door	
	Windows	Aluminum alloy glass windows	
Built-in configuration	roofing interior coverings	Eco-friendly eco-veneer	
	Partition wall	Calcium silicate board + bamboo water fiber push board	
	staircase	wood staircase	
	Bathroom doors	Aluminum alloy glass door	
	Bathroom flooring	Bathrooms have marble/tile floors	
	Room glass	Coated glass	
Basic configuration	toilet	Ceramic toilet	
	Showerhead	Refined copper hot and cold nozzles	
	Tabletop	Bathroom photo counter on plate	
	air conditioning	Inverter air conditioning and heating	
	water heater	60L storage water heater	
	tap	Tall faucets	
	Interior lights	Interior lights	



A-line light steel house



Product Information

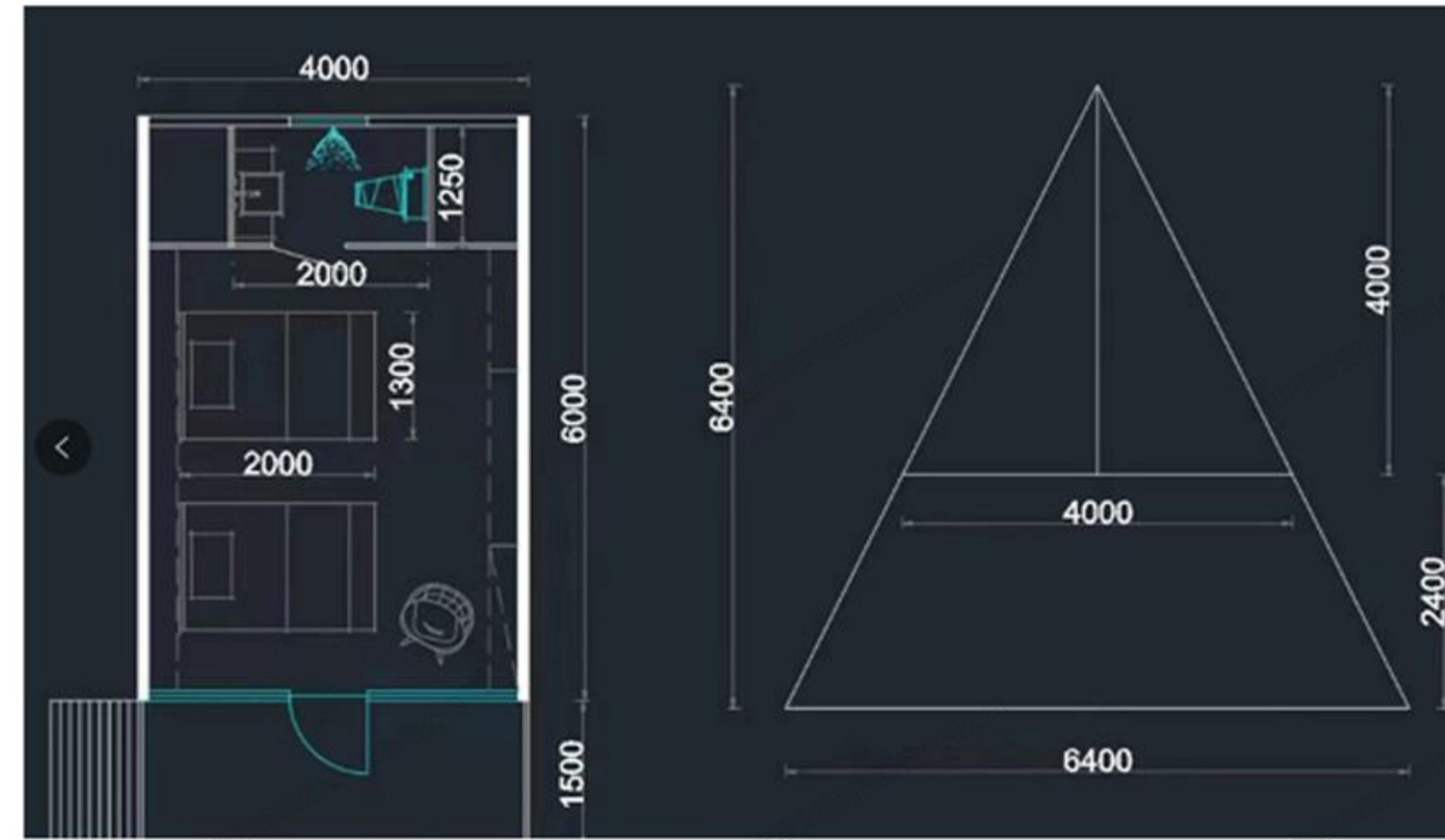


Interior decoration



Basic Information			
Type	A-line light steel house GS-01		
Number of floors	2 floors		
layout	two bedroom, one living room and one bathroom		
Dimensions (L*W*H)	customize		
Standard configuration			
category	project	Standard configuration	Support customization
Exterior configuration	Main frame	Light steel structure	
	Cabin shell	Waterproof layer + OSB board + aluminum-magnesium fireproof board + breaking paper + glass wool	
	Platform floor	Outdoor waterproof wooden flooring	
	doors	Aluminum alloy glass door	
	Windows	Aluminum alloy glass windows	
Built-in configuration	roofing interior coverings	Eco-friendly eco-veneer	
	Partition wall	Calcium silicate board + bamboo water fiber push board	
	staircase	wood staircase	
	Bathroom doors	Aluminum alloy glass door	
	Bathroom flooring	Bathrooms have marble/tile floors	
	Room glass	Coated glass	
Basic configuration	toilet	Ceramic toilet	
	Showerhead	Refined copper hot and cold nozzles	
	Tabletop	Bathroom photo counter on plate	
	air conditioning	Inverter air conditioning and heating	
	water heater	60L storage water heater	
	tap	Tall faucets	
	Interior lights	Interior lights	

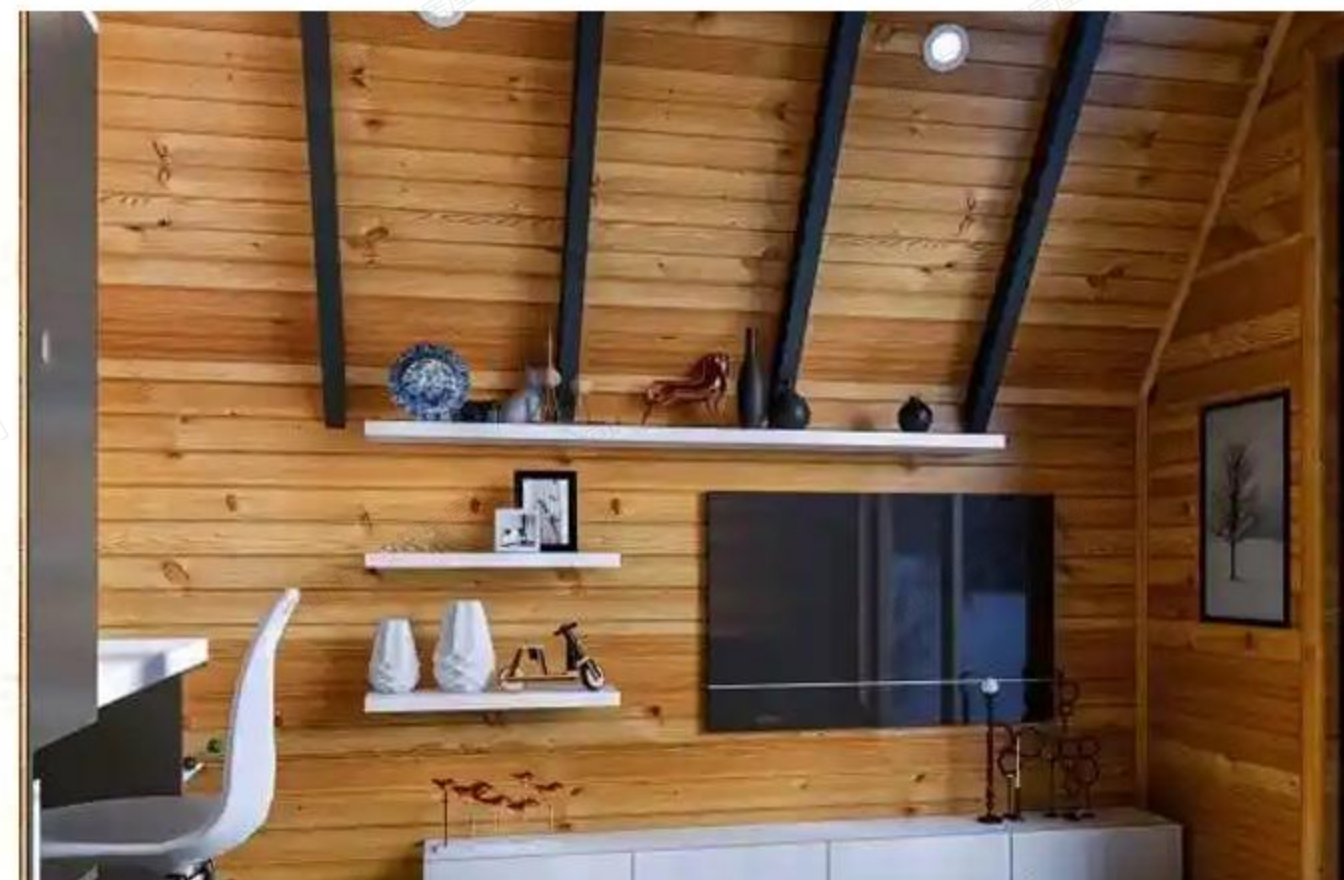
Triangular light steel house



Product Information



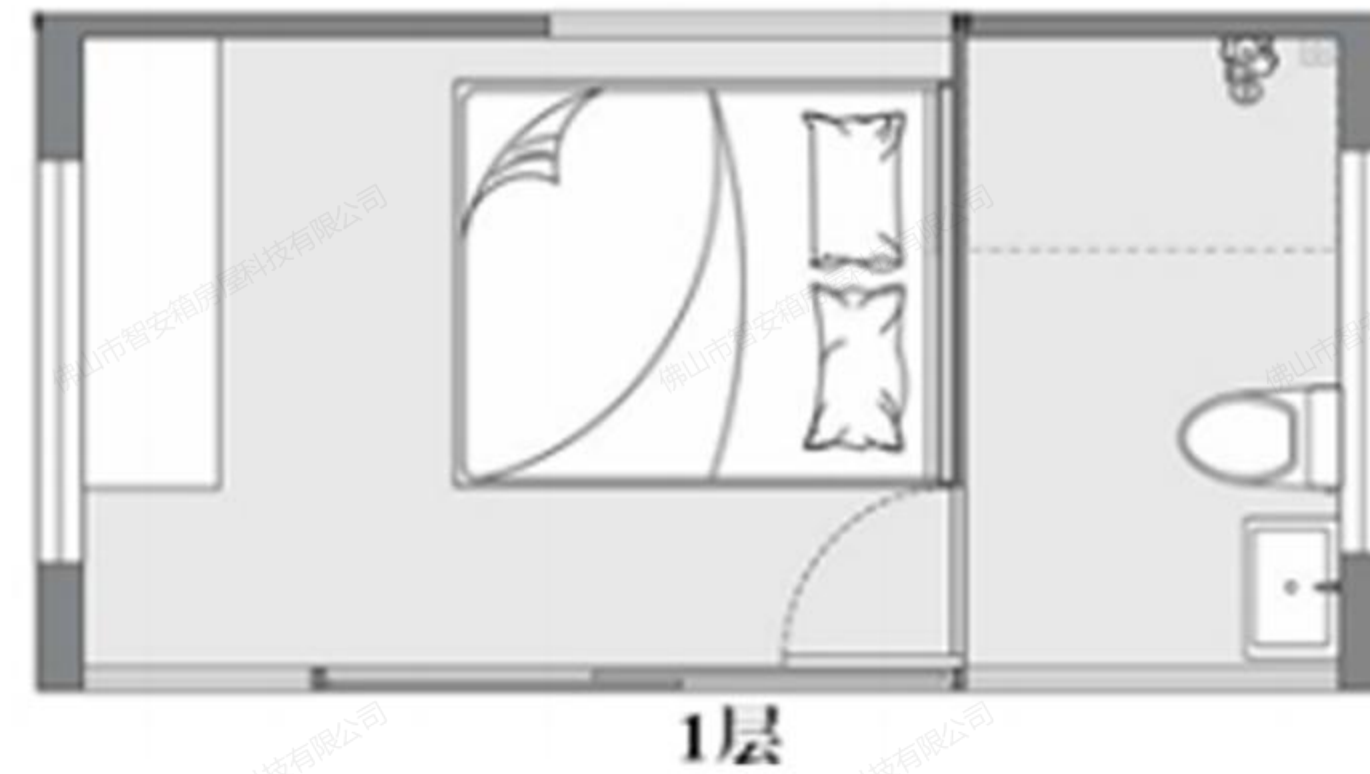
Interior decoration



Basic Information			
Type	Triangular light steel house GS-01		
Number of floors	2 floors		
layout	two bedroom, one living room and one bathroom		
Dimensions (L*W*H)	customize		
Standard configuration			
category	project	Standard configuration	Support customization
Exterior configuration	Main frame	S550 keel galvanized steel structural frame	
	Cabin shell	Waterproof layer + OSB board + aluminum-magnesium fireproof board + breaking paper + glass wool	
	Platform floor	Outdoor waterproof wooden flooring	
	doors	Aluminum alloy glass door	
	Windows	Aluminum alloy glass windows	
Built-in configuration	roofing interior coverings	Eco-friendly eco-veneer	
	Partition wall	Calcium silicate board + bamboo water fiber push board	
	staircase	wood staircase	
	Bathroom doors	Aluminum alloy glass door	
	Bathroom flooring	Bathrooms have marble/tile floors	
	Room glass	Coated glass	
Basic configuration	toilet	Ceramic toilet	
	Showerhead	Refined copper hot and cold nozzles	
	Tabletop	Bathroom photo counter on plate	
	air conditioning	Inverter air conditioning and heating	
	water heater	60L storage water heater	
	tap	Tall faucets	
	Interior lights	Interior lights	



Apple Pod House

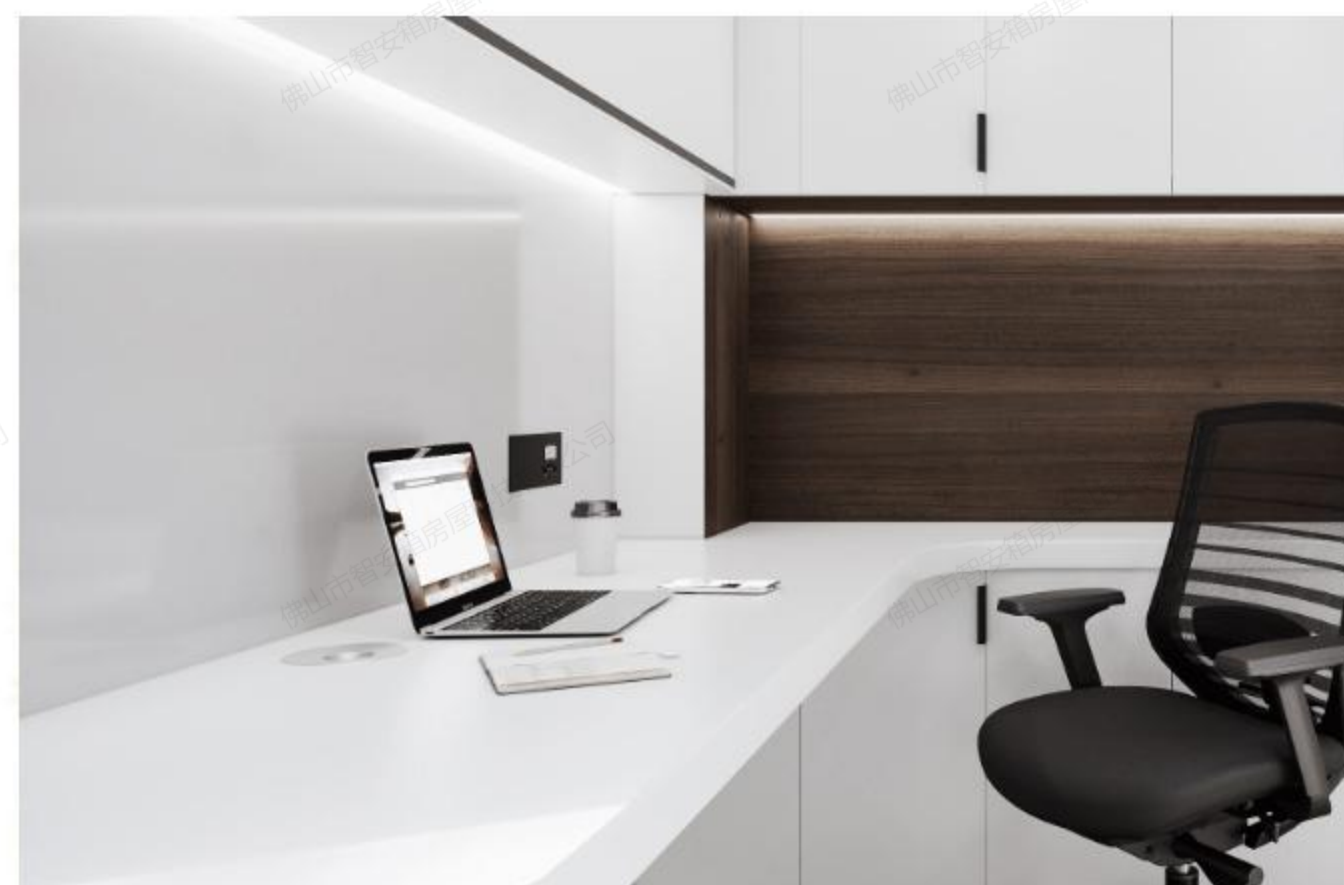


The large apple warehouse can be divided into multiple living plates, living room, lounge, study, kitchen, bedroom and other commonly used designs in apple warehouses, usually the front with a large area of glass to replace the wall panels, increase the indoor lighting and the appearance of the entire apple warehouse. Wherever you put it, you have the scenery wherever you look, and everything you see is the situation you are in.

Product Information



Interior decoration



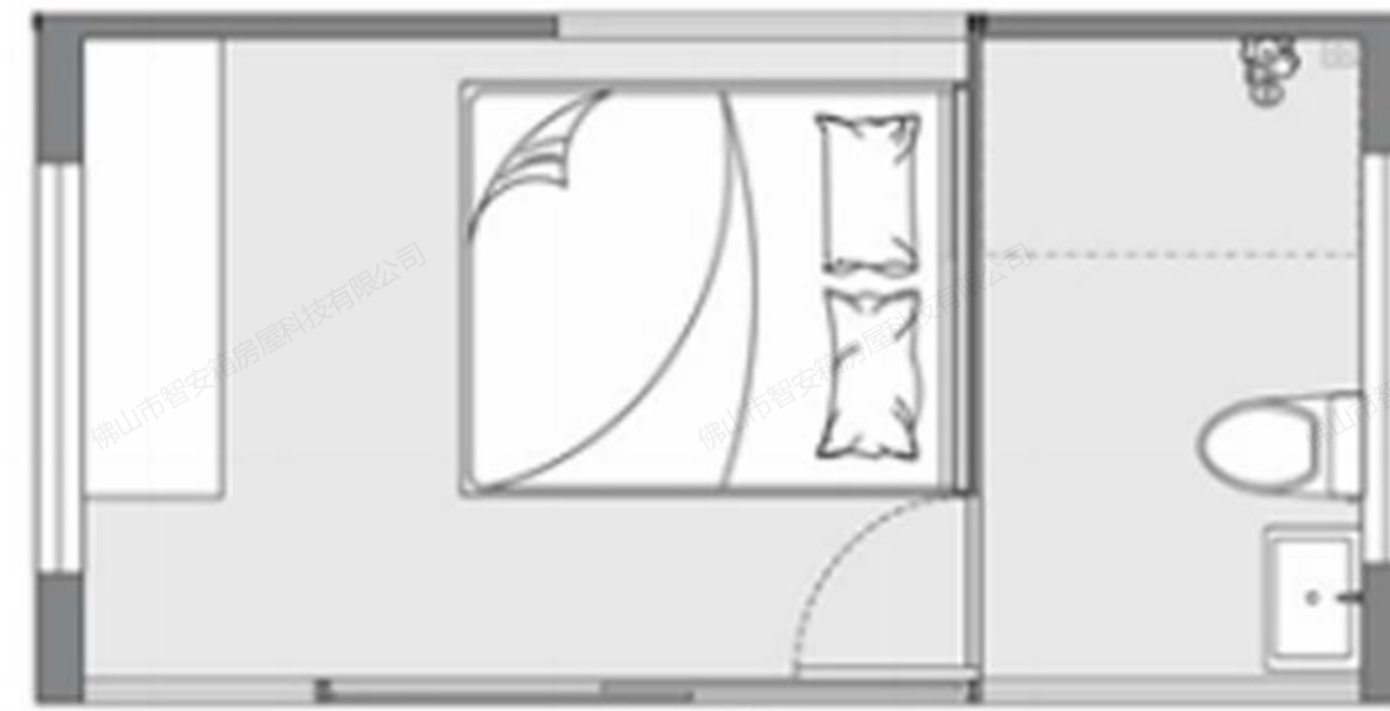
Basic Information			
Type	Apple Pod House GS-01		
Number of floors	1 floors		
layout	one living room and one bathroom		
Dimensions (L*W*H)	customize		
Standard configuration			
category	project	Standard configuration	Support customization
Exterior configuration	Main frame	Galvanized square pipes, galvanized flat pipes, galvanized	
	Cabin shell	Aluminum steel plate, galvanized steel plate	
	Platform floor	Fiberglass cement board + locking floor	
	walls	Rock wool board	
	Windows	Aluminum alloy glass windows	
Built-in configuration	roofing interior coverings	Bamboo and wood fiberboard	
	Partition wall	PVC ceiling + angle aluminum, wall module	
	ground	Fiberglass cement board + locking floor	
	Bathroom doors	Aluminum alloy glass door	
	Bathroom flooring	Bathrooms have marble/tile floors	
Basic configuration	Room glass	Coated glass	
	toilet	Ceramic toilet	
	Showerhead	Refined copper hot and cold nozzles	
	Tabletop	Bathroom photo counter on plate	
	air conditioning	Inverter air conditioning and heating	
	water heater	60L storage water heater	
	tap	Tall faucets	
Interior lights	Interior lights		

Apple Pod Display





Apple Pod House



1层

Product Information



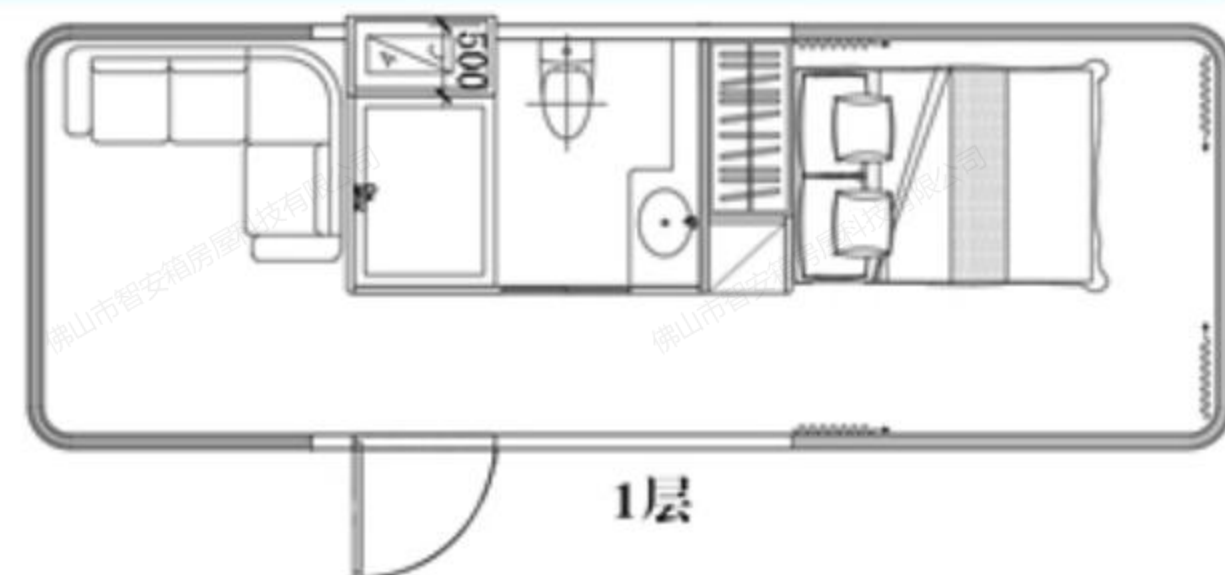
Interior decoration



Basic Information			
Type	Apple Pod House GS-01		
Number of floors	1 floors		
layout	one living room and one bathroom		
Dimensions (L*W*H)	customize		
Standard configuration			
category	project	Standard configuration	Support customization
Exterior configuration	Main frame	Galvanized square pipes, galvanized flat pipes, galvanized	
	Cabin shell	Aluminum steel plate, galvanized steel plate	
	Platform floor	Fiberglass cement board + locking floor	
	walls	Rock wool board	
	Windows	Aluminum alloy glass windows	
Built-in configuration	roofing interior coverings	Bamboo and wood fiberboard	
	Partition wall	PVC ceiling + angle aluminum, wall module	
	ground	Fiberglass cement board + locking floor	
	Bathroom doors	Aluminum alloy glass door	
	Bathroom flooring	Bathrooms have marble/tile floors	
	Room glass	Coated glass	
Basic configuration	toilet	Ceramic toilet	
	Showerhead	Refined copper hot and cold nozzles	
	Tabletop	Bathroom photo counter on plate	
	air conditioning	Inverter air conditioning and heating	
	water heater	60L storage water heater	
	tap	Tall faucets	
	Interior lights	Interior lights	



太空舱



It is not limited to terrain, suitable for various scenic spots, and the whole cabin is shipped. The aluminum shell cabin is like the exterior design of a spaceship, and the multi-angle giant viewing window has a multi-dimensional landscape view, allowing you to enjoy the infinite beauty. The interior decoration will combine nature and modernity, the appearance of the capsule is made of linear aluminum alloy material, panoramic double tempered glass, and the cool shape will attract the attention of young people. In the starry night, you can feel the ultimate experience of the "Wandering Universe". Let tourists sleep soundly under the quiet and tight starlight.

产品信息



室内装修

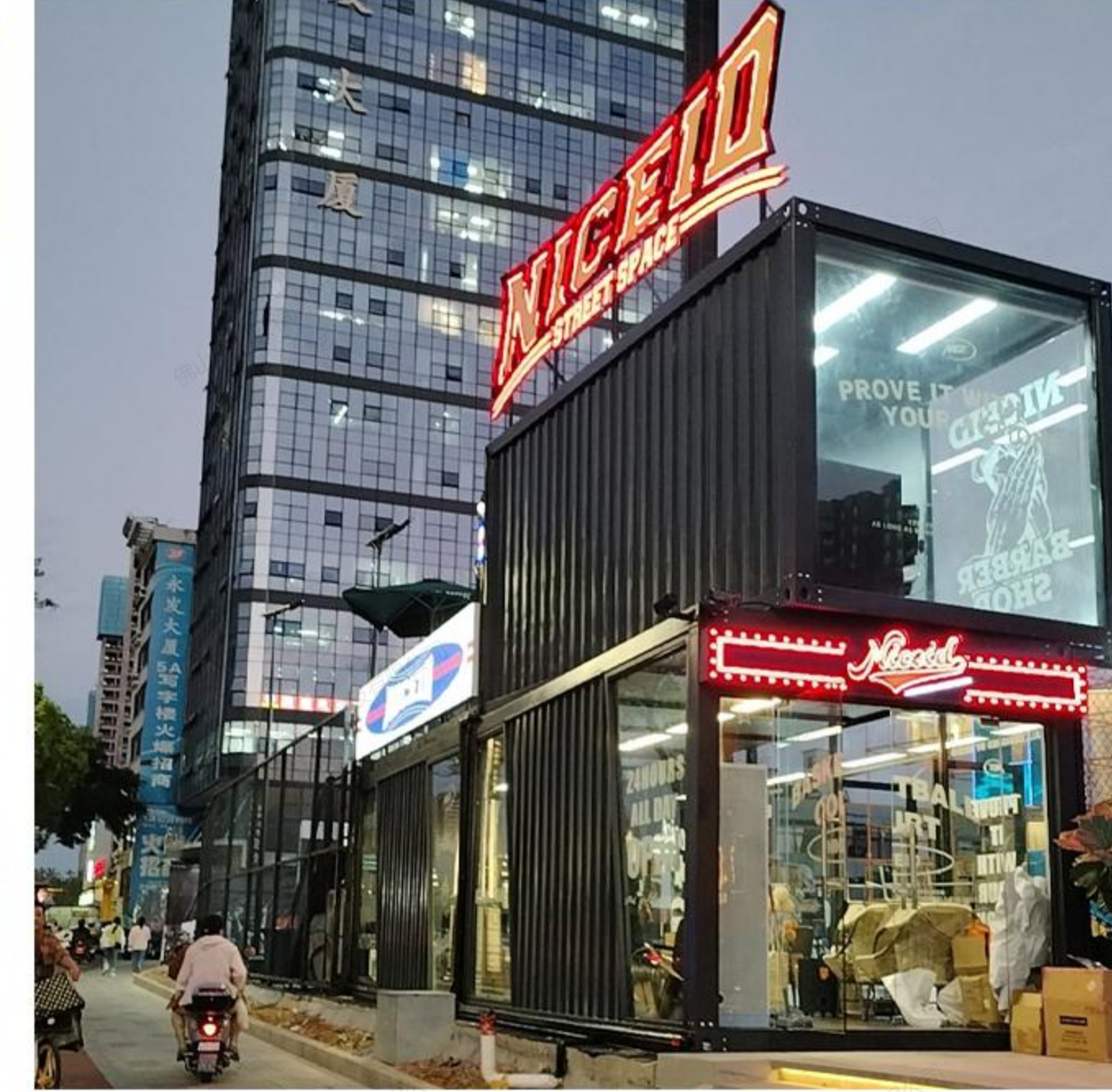


Basic Information			
Type	Space capsule GS-01		
Number of floors	1 floors		
layout	one living room and one bathroom		
Dimensions (L*W*H)	customize		
Standard configuration			
category	project	Standard configuration	Support customization
Exterior configuration	Main frame	G550 keel galvanized steel structure frame + aluminum sheet	
	Cabin shell	Aluminum steel plate, galvanized steel plate	
	Platform floor	Fiberglass cement board + locking floor	
	walls	Rock wool board	
	Windows	Aluminum alloy glass windows	
Built-in configuration	roofing interior coverings	Bamboo and wood fiberboard	
	Partition wall	Standard color integrated ceiling and wall modules	
	ground	Fiberglass cement board + locking floor	
	Bathroom doors	Aluminum alloy glass door	
	Bathroom flooring	Bathrooms have marble/tile floors	
Basic configuration	Room glass	Coated glass	
	toilet	Ceramic toilet	
	Showerhead	Refined copper hot and cold nozzles	
	Tabletop	Bathroom photo counter on plate	
	air conditioning	Inverter air conditioning and heating	
	water heater	60L storage water heater	
	tap	Tall faucets	
Interior lights	Interior lights		

Capsule display

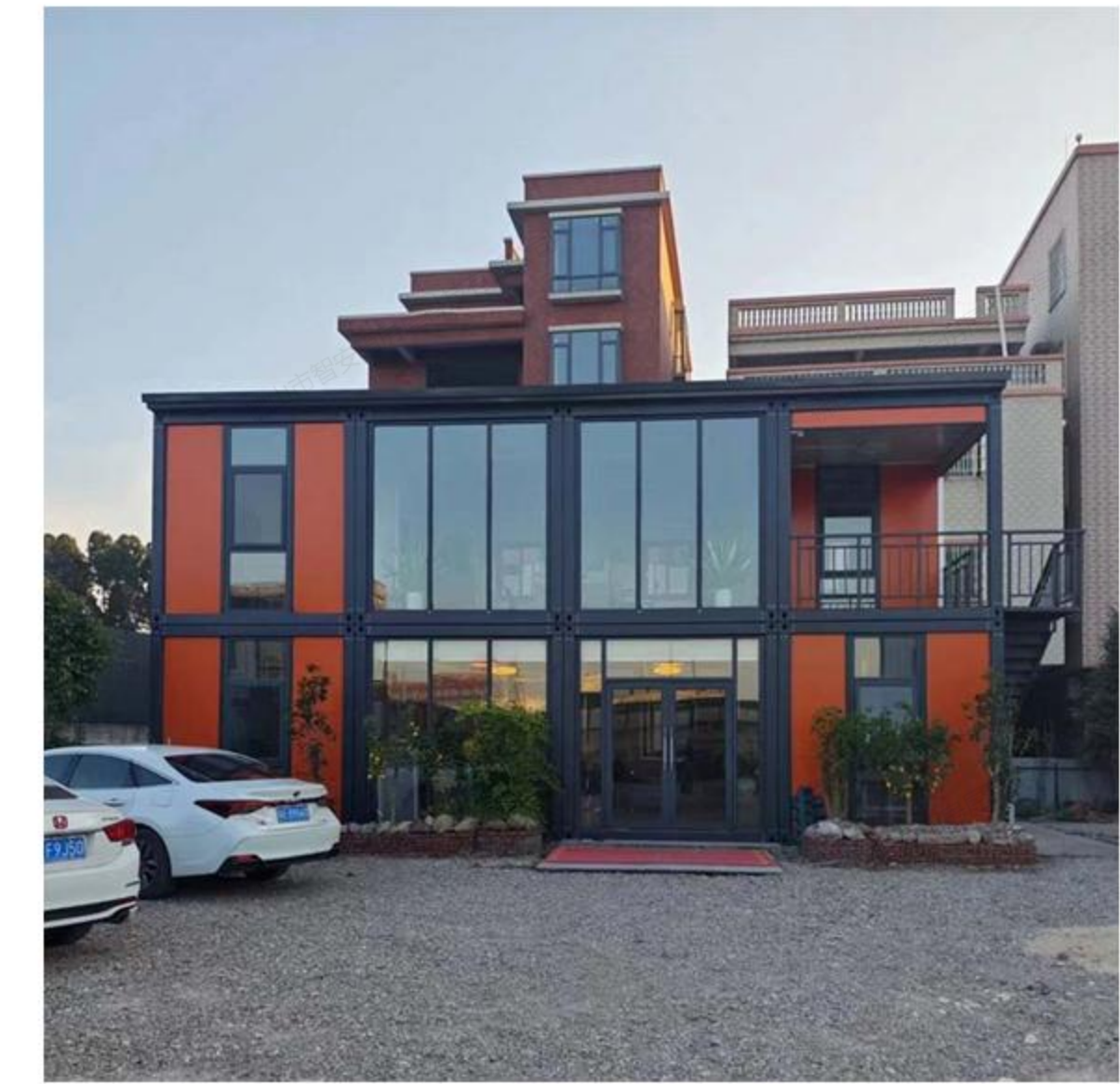
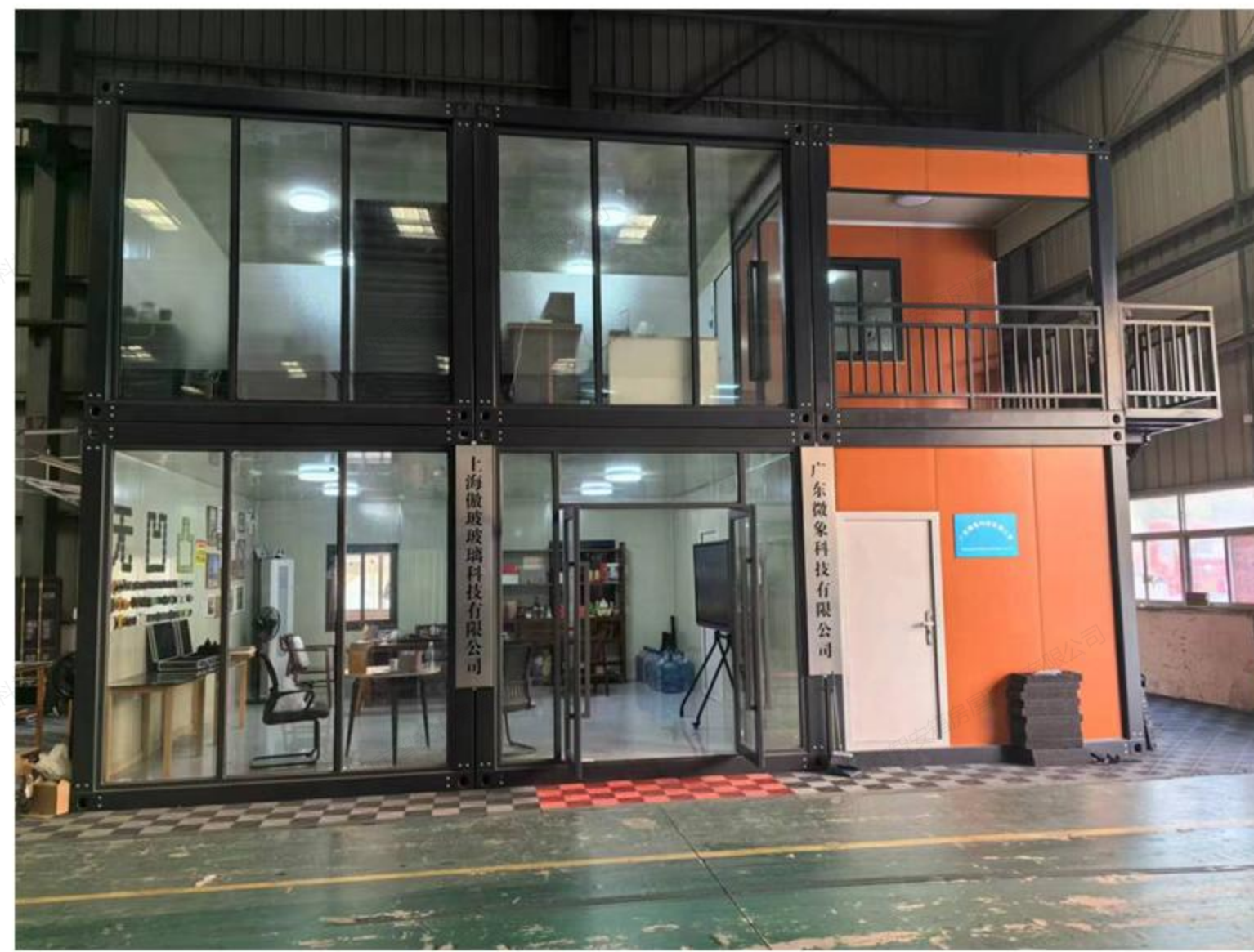


Display of effect pictures





Display of effect pictures

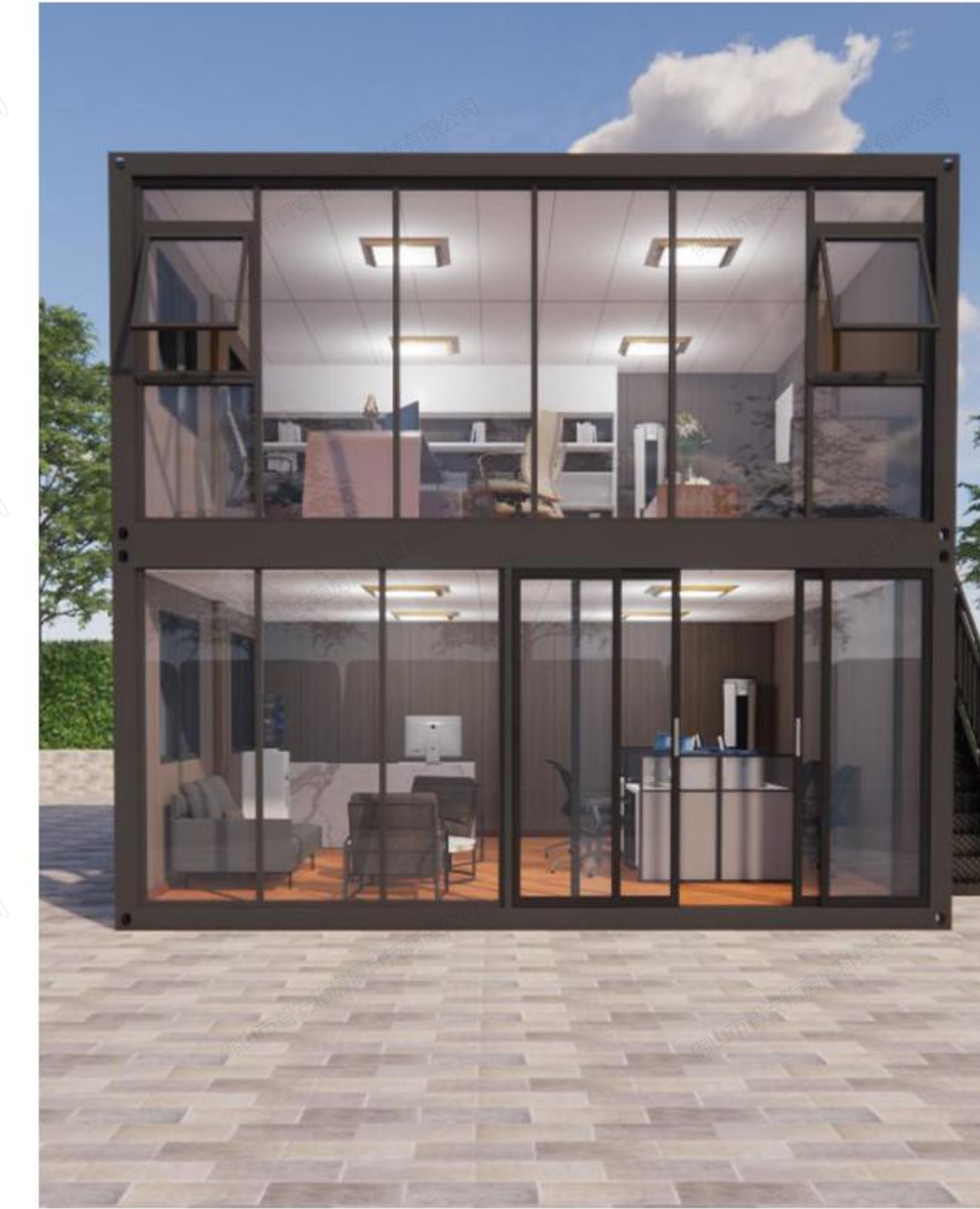


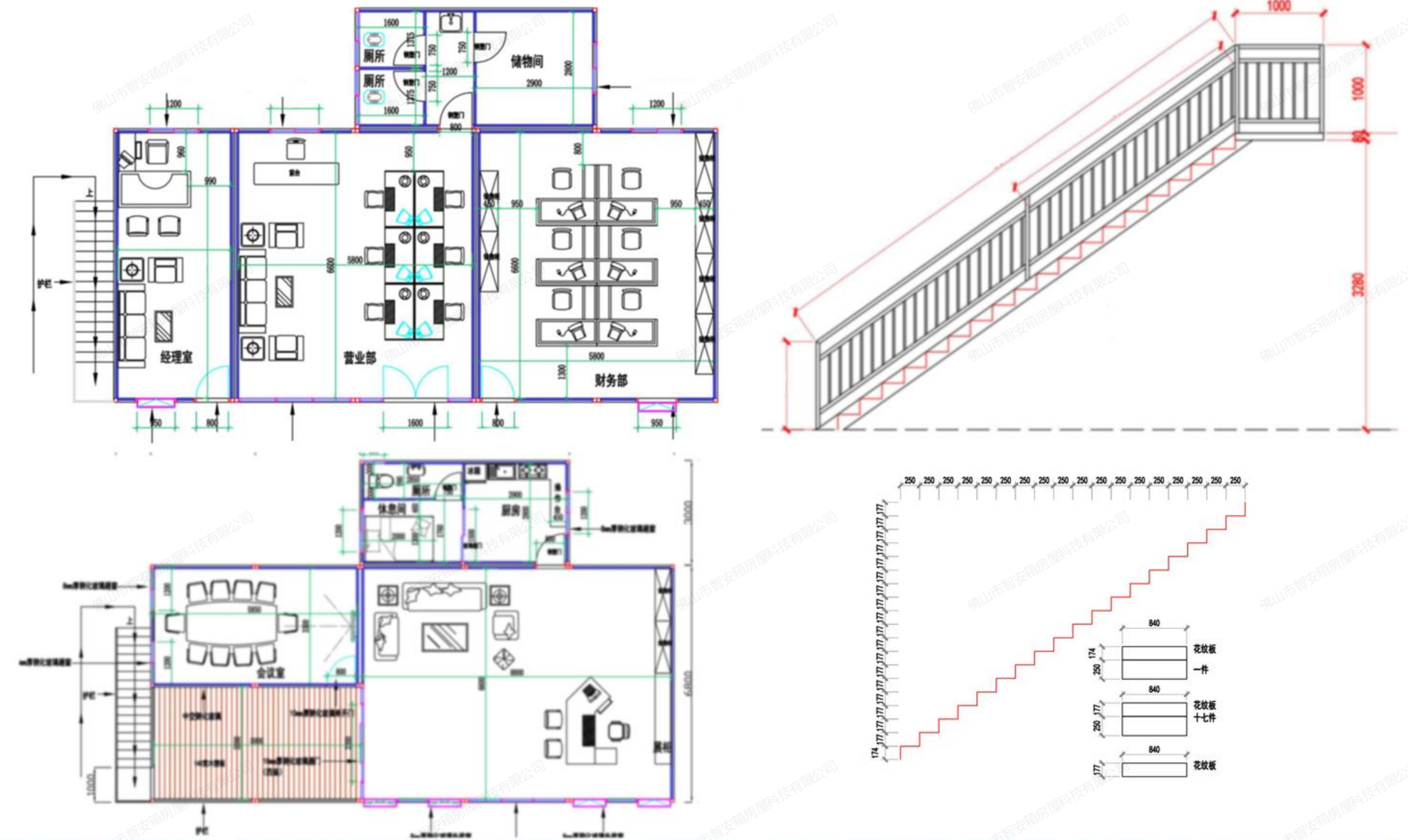
Professional packing trucks



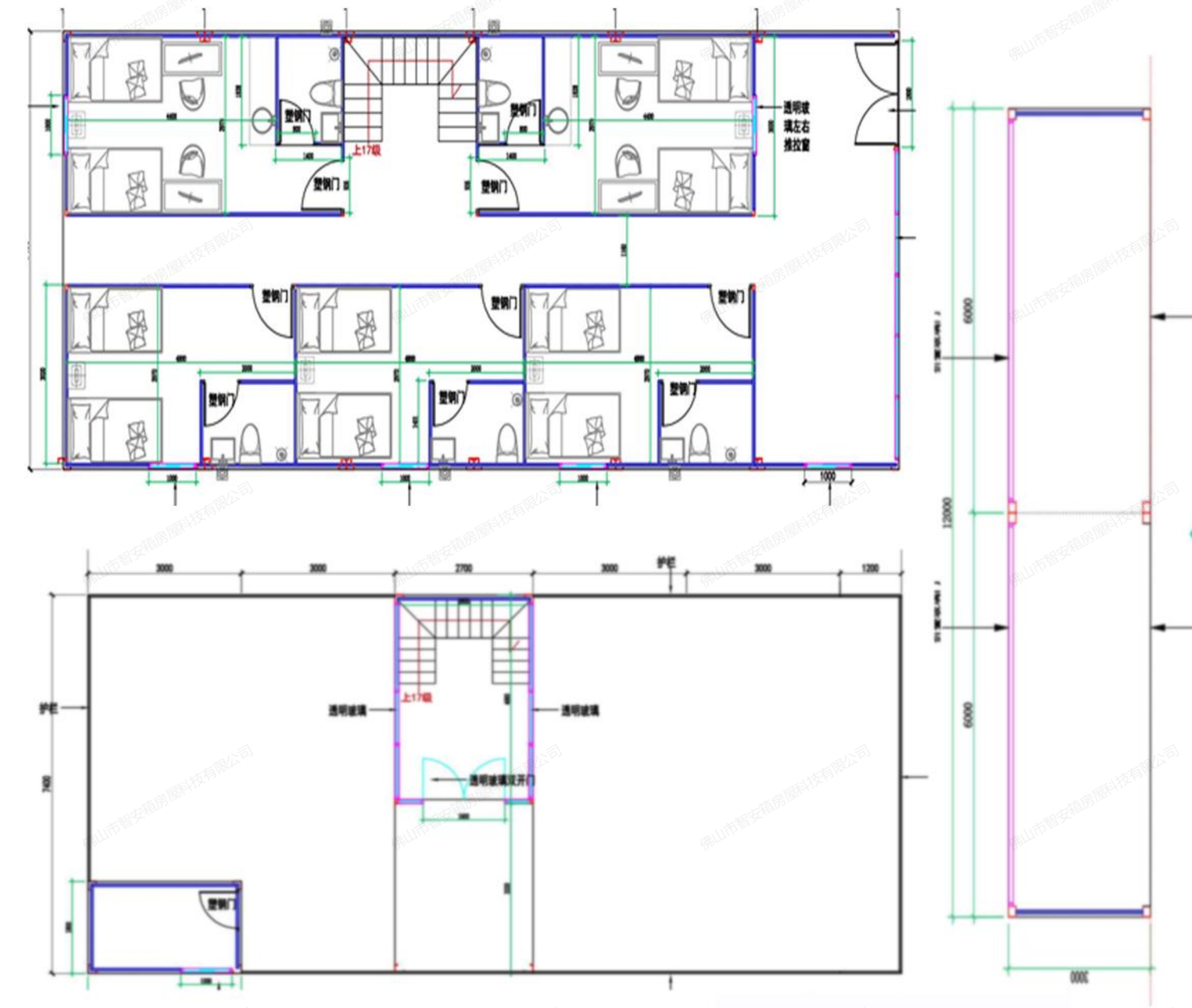
Renderings

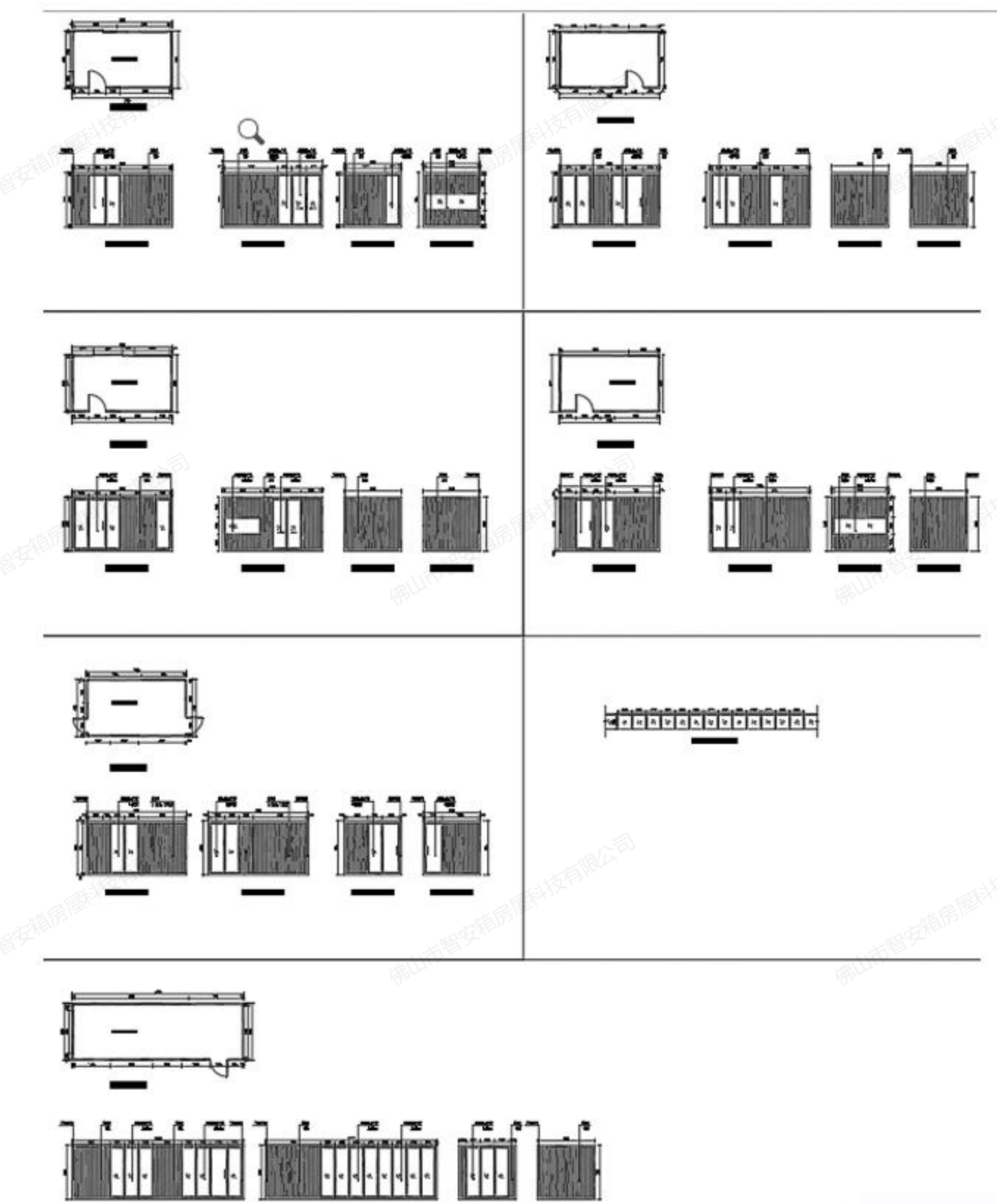
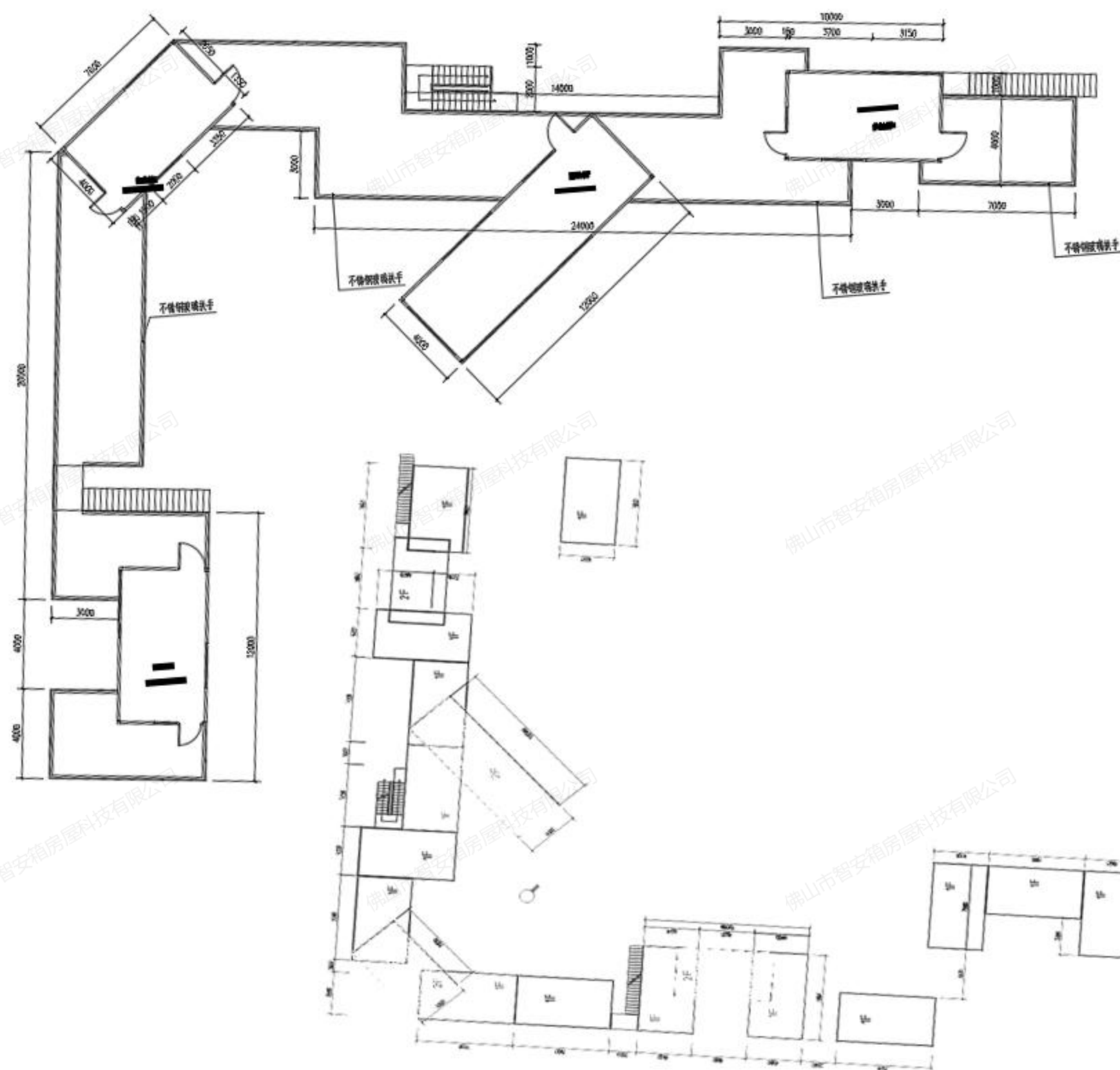
Display of effect pictures





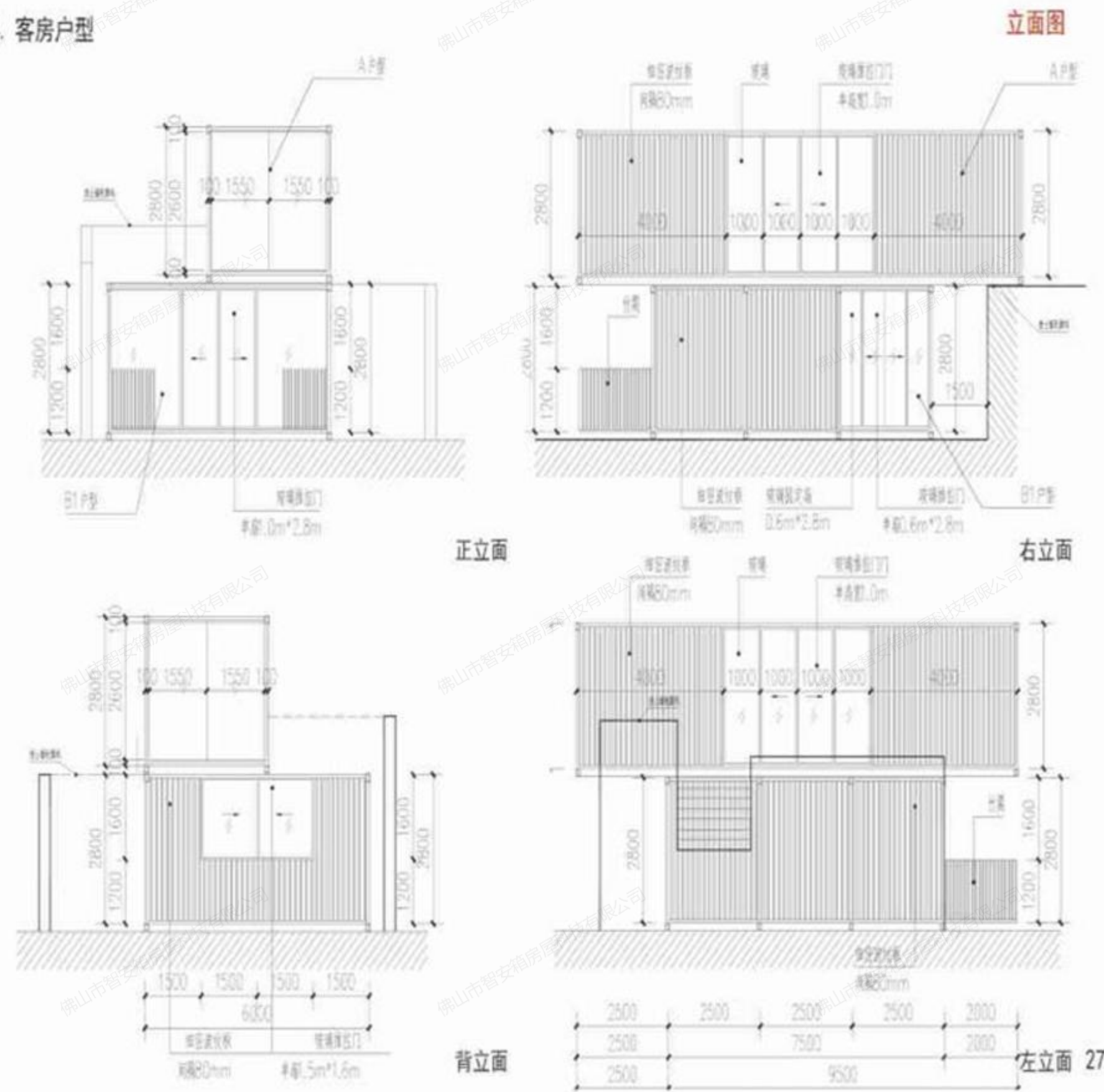
Customized office project in Taiwan



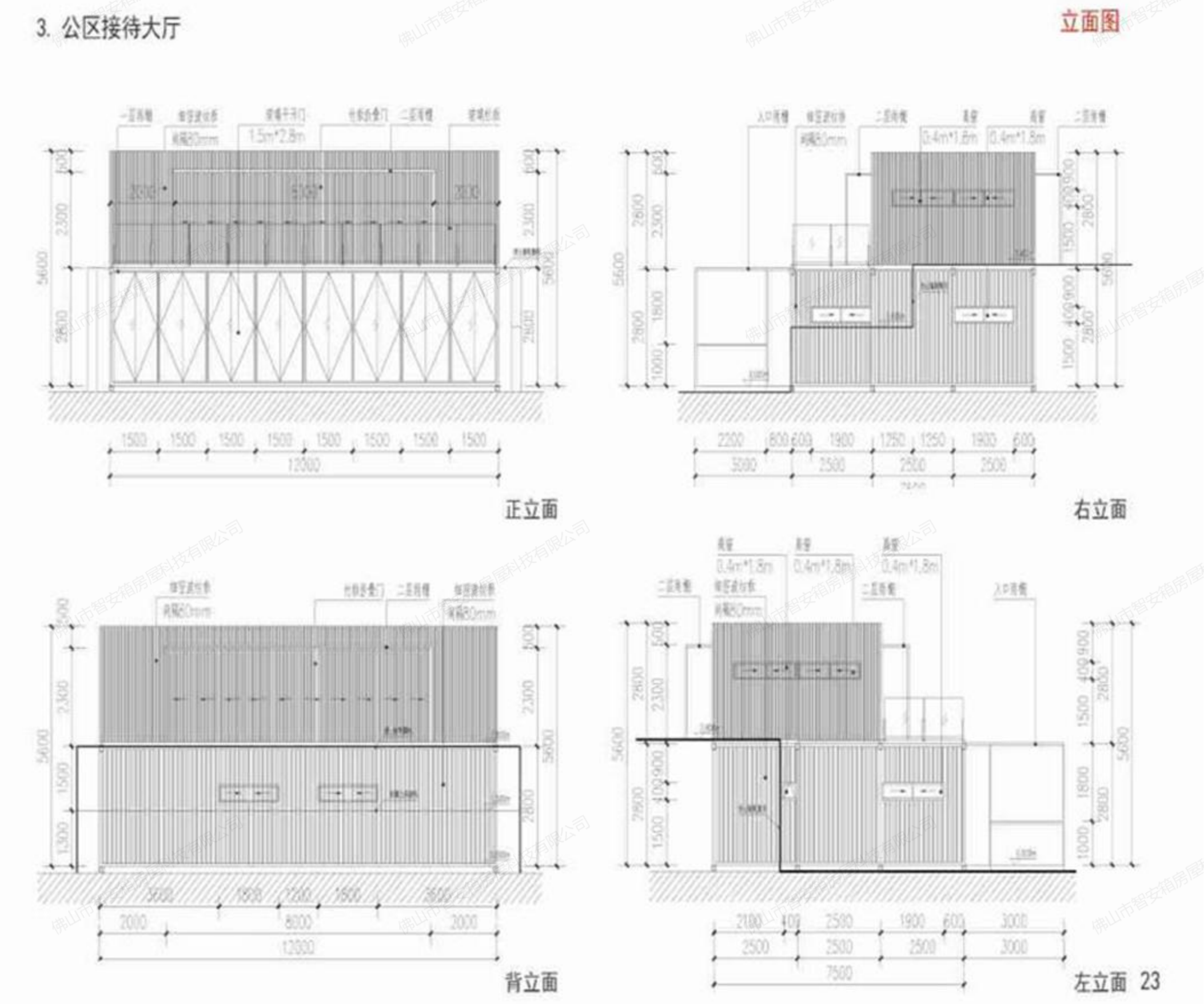


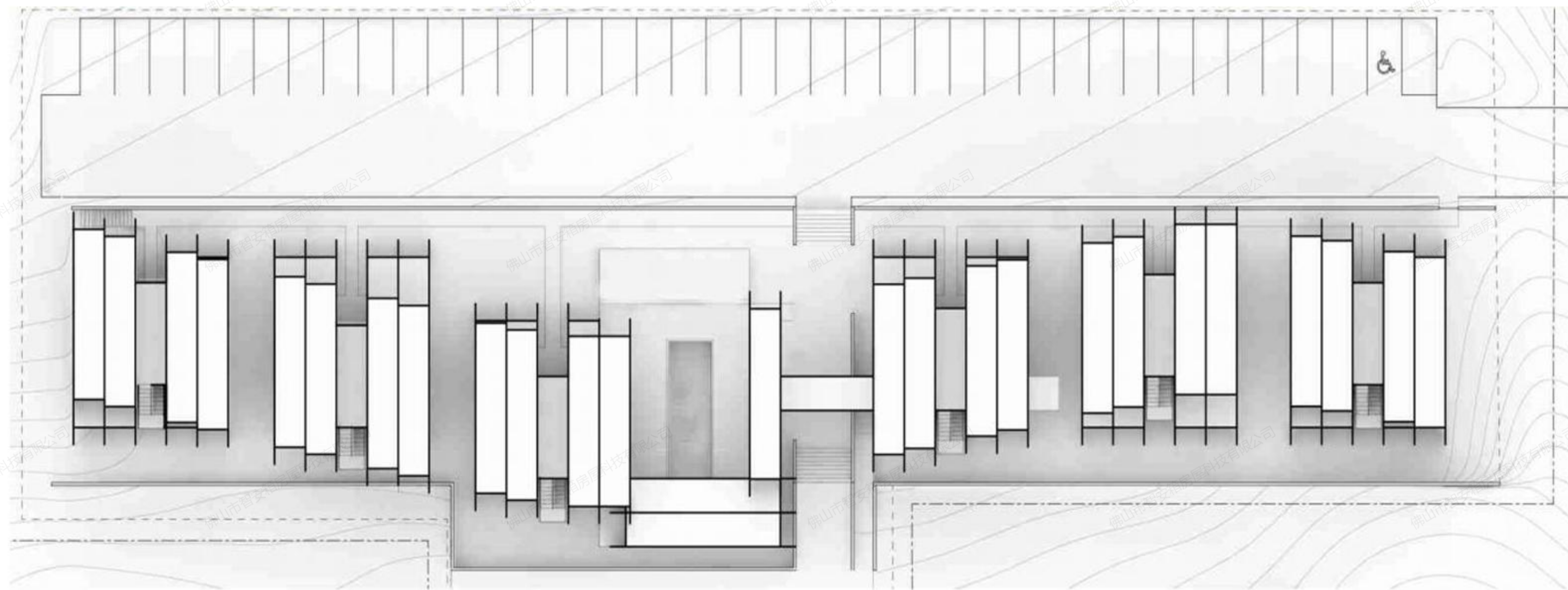


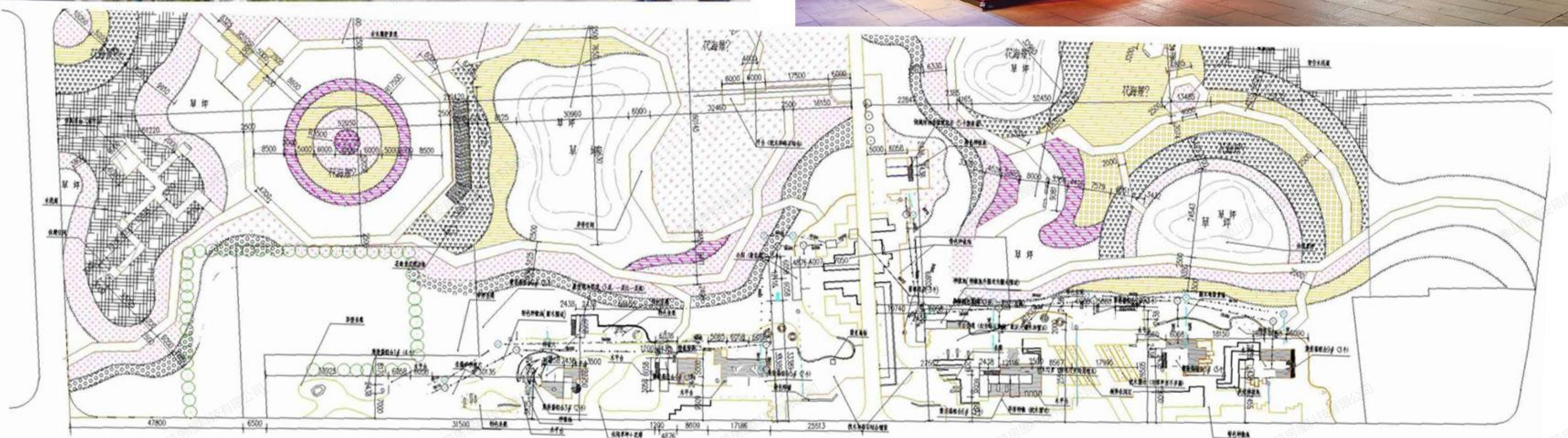
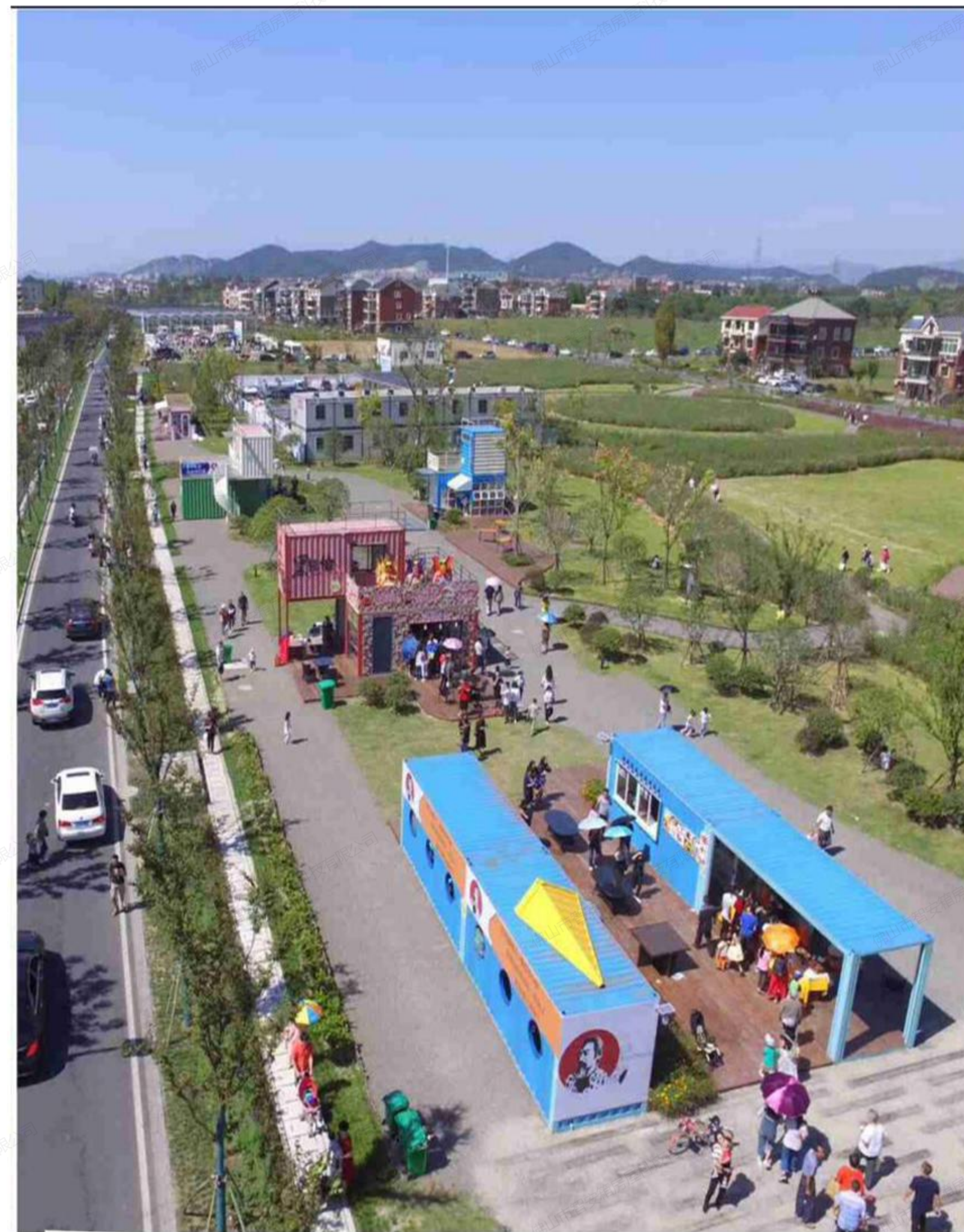
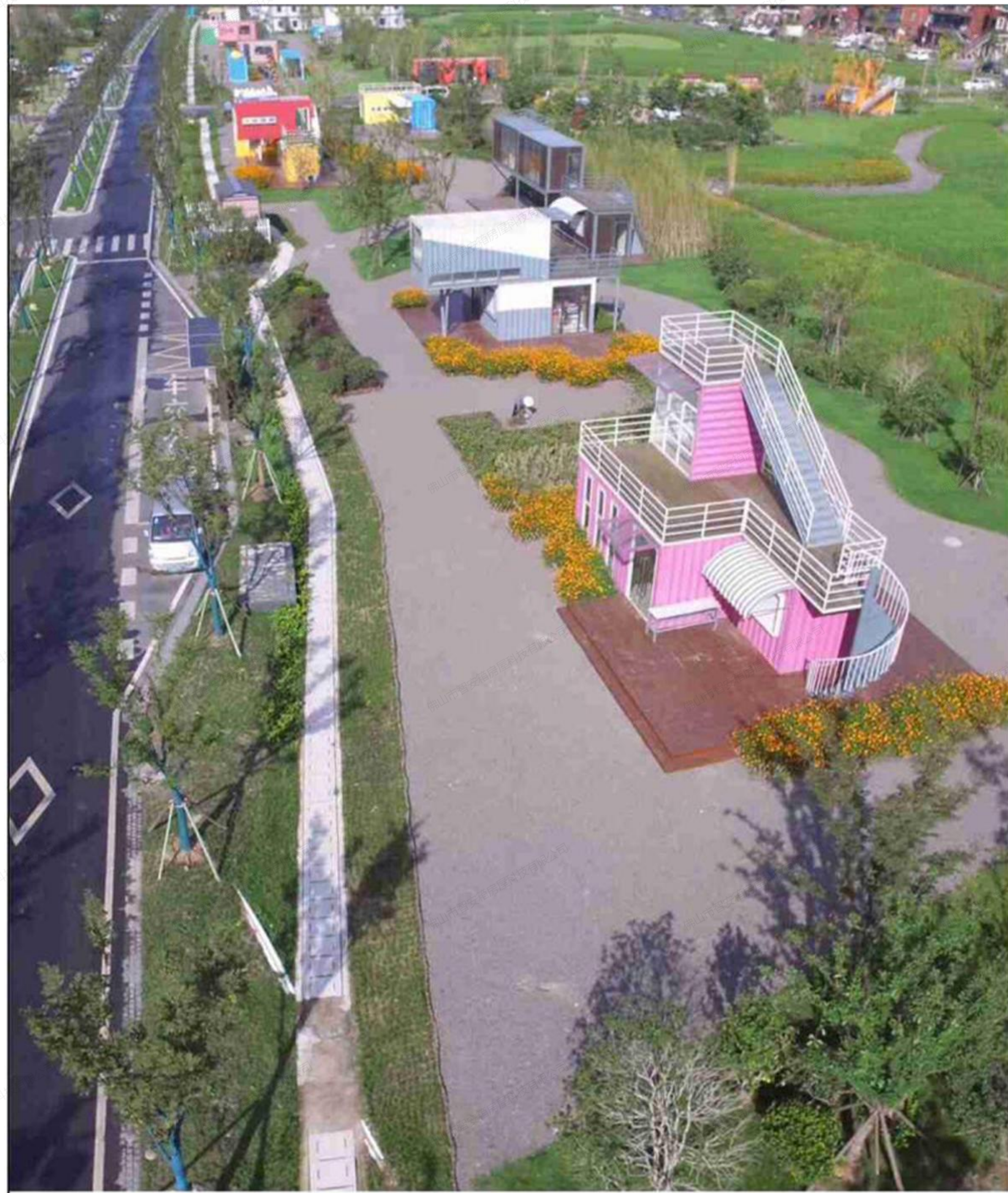
4. 客房户型



3. 公共接待大厅







2017.9.09 Hangzhou Xihu District Sandun Sunjiaba Langli Scenic Area Commercial Street
Project Description: 25 sets of boxes, 12 sets of combined room types